

# BART Election Districts: Adopted March 10, 2022



Prepared by: GEOinovo  
Solutions Inc.  
BART Redistricting

# TABLE OF CONTENTS

- 1. General Overview of Redistricting..... 1
- 2. Key Terms ..... 4
- 3. 2021-2022 Redistricting Process ..... 5
- 4. Population Summary of Final Election Districts ..... 9
- 5. 2020 Census Summary Data by 2022 BART Election Districts ..... 10
- 6. Citizen Voting Age Population (CVAP) Changes by District ..... 11
- 7. Population Changes by District ..... 14
- 8. Map of Election Districts Adopted March 10, 2022 ..... 17
  - 8.1. Map Adopted March 10, 2022 ..... 17
  - 8.2. Previous District Map..... 18
- 9. Maps and Descriptions of Each Election District..... 19
- 10. BART Stations by 2022 Election Districts..... 28
- 11. Metes and Bounds Definition of Election Districts..... 30
- Exhibit 1: Resolution No. 5501 ..... 43
- Exhibit 2: Resolution No. 5509 ..... 49
- Exhibit 3: 2020 Census Population by 2022 District and City ..... 63

# 1. GENERAL OVERVIEW OF REDISTRICTING

GEOinovo Solutions Inc. (GEOinovo) provided Demographer/Statistician services to Bay Area Rapid Transit (BART). This work included demographic analysis, participation in community engagement meetings and public hearings, and producing district maps using input from the community. Additionally, the redistricting process followed the rules and regulations of the Federal Voting Rights Act, California Voting Rights Act, and implemented the best practices of the California Fair Maps Act.

The redistricting process followed the following progression: (1) demographic and statistical analysis of the population within BART, (2) mapping the geography of the area, (3) community meetings/hearings/input, (4) creating six map iterations of the potential district boundaries and processing/creating four maps from the public, (5) presenting potential maps to the Board of Directors, and (6) the adoption of the final map by the Board. Each stage in the process was critical for meeting the California Fair Maps and California Voting Rights Acts best practices and regulations.

## Demographic & Statistical Analysis

Demographic and statistical analysis started with data collection. GEOinovo used U.S. Census Bureau Data from the 2020 Census and the American Community Survey, Redistricting Data from the California Statewide Database, and Voter Turnout Data from the County Registrar of Voters. Combining these data allowed for a complete understanding of the district. After the initial maps and geospatial analysis were completed, it was critical to engage with the community to better understand the reality of communities of interest (COI) at the street level. We presented our maps to BART during public meetings to acquire feedback from the community.

## Voting Rights

The Federal and California Voting Rights laws must be followed for every BART redistricting project. The following paragraphs break down these laws further. For more information regarding voting rights please see the legislation.

### Federal Voting Rights

GEOinovo applied Section II of the Federal Voting Rights Act of 1965 to the BART redistricting effort. The Federal Voting Rights Act established, under law, the prohibition of discrimination on the basis of race, color, or membership in one of the language minority groups. Discrimination can include redistricting that creates unusually large election districts among other elements of redrawing district lines.

### California Fair Maps Act Best Practices

Although not specifically applicable to transit districts, the BART Board of Directors adopted Resolution No. 5501 on January 13, 2022 (see [Exhibit 1: Resolution No. 5501](#)), formally implementing a redistricting strategy that aligns with the requirements of the California Fair Maps Act. The purpose of the Fair Maps Act is to ensure that redistricting creates maps that

represent the demographic makeup of a community and minimizes the division of communities of interest.

GEOinovo supported the redistricting of BART while complying with the industry best practices of creating geographically contiguous districts, creating districts providing racial/ethnic protected groups with an equal opportunity to participate in the political process, without being diluted, and minimizing the division of communities of interest to the extent practicable.

Community engagement is critical to complying with the Fair Maps Act. GEOinovo provided multiple online tools such as GEODistrict, enabling the community to submit draft districts and Communities of Interest (COI).

To meet the California Fair Maps Act requirements, adopted district boundaries adhere to the following criteria in the following order of priority to the extent practicable.

- 1) Districts shall be geographically contiguous.
- 2) Districts shall maintain the geographic integrity of local neighborhoods or Communities of Interest.
- 3) To the extent practicable, district boundaries should be easily identifiable and understandable by residents, using natural and artificial barriers, streets, or the boundaries of cities, counties, or census designated places.
- 4) To the extent practicable, and where it does not conflict with the preceding criteria, districts shall be drawn to encourage geographical compactness.

## Community Engagement

Community engagement provides the opportunity to better understand the differences between communities of interest within the district. These activities include community outreach, public hearings, and engaging with the community by allowing district residents to submit their own maps of where they believe the district boundaries should be drawn.

Communities of Interest may be separated by geographical barriers such as freeways and industrial zones and can include small well established community groups. Engaging with the community meets the California Fair Maps Act best practices and helps incorporate ground level community understanding into the final district maps.

## California Statewide Database: Adjusted Prisoner Population

In California, the State's Citizens Redistricting Commission and many local jurisdictions including Cities and Counties are required by law to use the official redistricting dataset provided by the Statewide Database. This dataset is different from the data that the U.S. Census Bureau provides in that it has reallocated data from incarcerated persons that were enumerated in facilities under the control of the California Department of Corrections and Rehabilitation to their last residential address. You can find more information about this requirement in [California Elections Code Section 21003](#).

Source: [https://statewidedatabase.org/redistricting2021/redistricting\\_database.html](https://statewidedatabase.org/redistricting2021/redistricting_database.html)



## Public Web Tools

To encourage community feedback and input, we created two web maps for members of the public to view and submit district maps and communities of interest. GEOinovo implemented the “BART Interactive Mapping Tool for Redistricting” and the “BART Districts and Demographic Data.”

### GEODistrict Application: BART Interactive Mapping Tool for Redistricting

GEOinovo developed the GEODistrict web mapping tool to support the BART 2022 Redistricting Effort and meet the community engagement requirements of the California Fair Maps Act. GEODistrict enabled community members to share their input during the redistricting process by identifying geographic areas that were important to them. The tool provided basic functionality to create or edit election districts or Communities of Interest and submit those areas for consideration. Community input submitted via the GEODistrict web mapping tool was a useful resource for GEOinovo to create districts that comply with relevant voting laws and provide fair and equitable representation to all residents. Input from the tool was sent directly to GEOinovo for review, analysis, and processing.

### Interactive Webmap: BART Districts and Demographic Data

GEOinovo implemented an interactive web map for the BART 2022 Redistricting Effort. The “BART Districts and Demographic Data” web map allowed the public to view 2011 district boundaries, proposed districts, BART stations, demographic data at the US Census Block Group level, and city and county boundaries in Alameda, Contra Costa, and San Francisco counties. The web map included a slider functionality allowing users to compare the various map options in real-time by swiping between different maps.

### Dashboard

The BART Redistricting Dashboard was deployed as a data visualization tool to enable residents and elected officials to analyze complex demographic data related to redistricting. The dashboard was designed to provide a snapshot of demographic data by current and proposed Board of Director Districts and prominent ethnic groups within the BART service area. Another benefit of the dashboard was the ability to provide transparency into the data being used during the redistricting process and visualize key statistics by district, including total population and Citizen Voting Age Population (CVAP).

### GEO Community Input Map (CIM)

GEOinovo deployed a Community Input Map (CIM) for the Bay Area Rapid Transit (BART) redistricting project. This is an ArcGIS Survey 123 tool that allows public input by identifying communities of interest on a map and providing written feedback for consideration during the redistricting process. This tool was deployed as a lightweight, easy-to-use alternative to the GEODistrict application for those who wanted to provide input for a localized area instead of drafting districts for the entire BART service area.

## 2. KEY TERMS

**CVAP:** Citizen Voting Age Population (CVAP) is the total population that is age 18 and over and a U.S. citizen.

**Protected Class:** A historically marginalized or underrepresented part of the population. California protected classes are as follows:

- Race
- Color
- Religion (includes religious dress and grooming practices)
- Sex/gender (includes pregnancy, childbirth, breastfeeding and/ or related medical conditions)
- Gender identity, gender expression
- Sexual orientation
- Marital status
- Medical Condition (genetic characteristics, cancer or a record or history of cancer)
- Military or veteran status
- National origin
- Ancestry
- Disability (mental and physical including HIV/AIDS, cancer, and genetic characteristics)
- Genetic information
- Request for family care leave
- Request for leave for an employee's own serious health condition
- Request for Pregnancy Disability Leave
- Retaliation for reporting patient abuse in tax-supported institutions
- Age (over 40)

Source: <https://www.kingsiegel.com/blog/2021/march/what-is-a-protected-class-in-california/>

**Community of Interest (COI):** A neighborhood, community, or group of people who have common policy concerns and would benefit from being maintained in a single district.

**Influence:** Used in reference to CVAP, voter registration, and voter turnout (not population).

**Population Variance** = (Most Populated District – Least Populated District) / (Ideal Population).

Value is expressed as a percentage and uses total population for census blocks assigned to each district. Population variance does not use Citizen Voting Age Population (CVAP) or any other population metric.

## 3. 2021-2022 REDISTRICTING PROCESS

### 2021-2022 Redistricting of BART Election Districts

The 2021-2022 BART redistricting of election districts was guided by the Federal Voting Rights Act of 1965, the California Voting Rights Act of 2001, and the California Fair Maps Act of 2019. GEOinovo created three initial Plans (A, B, and C) for public comment and discussion. With a total of five (5) community engagement meetings, as required by the Fair Maps Act, GEOinovo received lively and extensive feedback. We worked with community members and the BART Board of Directors to incorporate feedback into Plans D, E, and E2. In addition, we worked with members of the community to develop Public Plans 103 and 104. Substantial effort was used to incorporate public feedback, maintain the geographic integrity of cities and census designated places, and maintain the geographic integrity of communities of interest to the extent practicable.

GEOinovo provided Plans A and B within the first few weeks of the redistricting process. After feedback from the public, Plan C was created. Plans D, E, and E2 were created in the last few weeks of the redistricting process to incorporate as much community feedback as possible. GEOinovo supported public input by working one-on-one with a few members of the public to create plans 103 and 104. Plans 101 and 102 were created and submitted to BART using the online web tools. Plan E2 was the final plan and was adopted by the BART Board of Directors.

### Community Meetings

BART conducted nine public redistricting meetings, including five public outreach meetings to provide an opportunity for public input on the redrawing of the BART election districts. These meetings took place from November 2021 to March 2022. The meetings were held online through video conferencing software and the links to the meetings were made public on the BART Redistricting web page.

Information was provided at each public meeting regarding redistricting best practices, legal requirements, proposed district maps, and other items relevant to each stage in the redistricting process. Presentation materials included information about a wide range of topics, including the California Fair Maps Act, creating geographically contiguous and compact districts, and creating population-balanced districts with a variance as close to 0% as possible. Additional items included technology demonstrations, submitting proposed maps through online mapping tools, and open discussions to provide information about redistricting data sources and considerations. Participants were given the opportunity to express their concerns and ask questions to GEOinovo and members of the Board of Directors attending the meeting. Past meetings were posted to the BART Redistricting webpage to allow participants to go back and view each meeting.

### Outreach

BART performed community outreach. For additional information regarding outreach, contact the District Secretary's Office at (510) 464-6083.

## Proposed Redistricting Plans

### Plan A: Increased Opportunities

Plan A maximized the influence of the two largest protected class groups, Asian and Latino, in BART elections. This plan creates an Asian-majority district with 57.7% of the population (District 6) and a district with a significant Asian population of 47.4% (District 8). The Latino population is significantly represented with 37.6% in District 2 and 44.7% in District 4. Latino influence is achieved with a CVAP of 26.1% in District 2 and 29.7% in District 4.

### Plan B: Similar to 2011 District Boundaries

Plan B preserves the 2011 districts with minor adjustments for 2020 Census Block geography and population balance. All Districts maintain greater than 90% of their population when compared to 2011 districts. Districts 1, 5, 6, and 7 maintain greater than 95% of their current population and Districts 2 and 4 maintain greater than 99% of their population when compared to the 2011 districts.

### Plan C: Developed with Consideration of Points of Interest

This plan was developed using destination analysis of points of interest (i.e., locations that may be likely destinations for BART riders). The plan also considers opportunities for shared station representation between BART Directors.

### Plan D

Plan D was developed to incorporate feedback from the BART Board of Directors and members of the public at the February 16, 2022, Special Board Meeting. The following table details the actionable feedback provided during the meeting.

Comment	Director/Public	Plan D
Chinatown	Vice President Li	✓
Bayview District	Vice President Li	✓
Marina District	Vice President Li	✓
City of Clayton	Director Allen, Public	✓
Morgan Territory Rd	Director Allen	✓
City of Orinda	Director Allen	✓
City of Lafayette	Director Allen	✓
Concord Station	Director Allen	✓
Martinez Station + population	Director Foley	✓
Sunol / Vargas Plateau / Niles Canyon	Director Ames	✓
Oakland, African American pop	Director Raburn, Public	✓
City of Oakland (2 districts) *	Director Raburn, Public	
City of Oakland (3 districts)	Director Raburn, Public	✓
El Cerrito Plaza	President Saltzman	✓
City of El Cerrito	President Saltzman	✓
City of Albany	President Saltzman	✓
Coliseum / OAK linked together	President Saltzman, Director Rayburn	✓
UC Berkeley	President Saltzman	✓

<b>D3: Geographic compactness</b>	<b>Pres. Saltzman, Dirs. McPartland, Allen</b>	✓
<b>El Cerrito Plaza Station</b>	<b>President Saltzman</b>	✓

\*Feedback for the City of Oakland (2 districts) were incorporated into Plan E.

Plan D proposes substantial changes to some of the districts to maintain population balance. For example, District 7 only maintains 10.1% of CVAP when compared to 2011 districts. By contrast, District 6 maintains 95.2% of CVAP when compared to 2011 districts.

### Plan E

Plan E was developed to incorporate feedback from the BART Board of Directors and members of the public at the February 16, 2022, Special Board Meeting. The following table details the actionable feedback provided during the meeting.

Comment	Director/Public	Plan E
<b>Chinatown</b>	<b>Vice President Li</b>	✓
<b>Bayview District</b>	<b>Vice President Li</b>	✓
<b>Marina District</b>	<b>Vice President Li</b>	✓
<b>City of Clayton</b>	<b>Director Allen, Public</b>	✓
<b>Morgan Territory Rd</b>	<b>Director Allen</b>	✓
<b>City of Orinda</b>	<b>Director Allen</b>	✓
<b>City of Lafayette</b>	<b>Director Allen</b>	✓
<b>Concord Station</b>	<b>Director Allen</b>	✓
<b>Martinez Station + population</b>	<b>Director Foley</b>	✓
<b>Sunol / Vargas Plateau / Niles Canyon</b>	<b>Director Ames</b>	✓
<b>Oakland, African American pop</b>	<b>Director Raburn, Public</b>	✓
<b>City of Oakland (2 districts)</b>	<b>Director Raburn, Public</b>	✓
<b>City of Oakland (3 districts) *</b>	<b>Director Raburn, Public</b>	
<b>El Cerrito Plaza</b>	<b>President Saltzman</b>	✓
<b>City of El Cerrito</b>	<b>President Saltzman</b>	✓
<b>City of Albany</b>	<b>President Saltzman</b>	✓
<b>Coliseum / OAK linked together</b>	<b>President Saltzman, Director Rayburn</b>	✓
<b>UC Berkeley **</b>	<b>President Saltzman</b>	
<b>D3: Geographic compactness</b>	<b>Pres. Saltzman, Dirs. McPartland, Allen</b>	✓
<b>El Cerrito Plaza Station</b>	<b>President Saltzman</b>	✓

\*Feedback for the City of Oakland (3 districts) were incorporated into Plan D.

\*\*Feedback for UC Berkeley was incorporated into Plan D.

Plan E proposes substantial changes to some of the districts to maintain population balance. For example, District 7 only maintains 28.1% of CVAP when compared to the 2011 districts. By contrast, District 6 maintains 95.6% of CVAP when compared to 2011 districts.

### Public Plan 101

Public Plan 101 was submitted by one member of the Board of Directors but then later voluntarily withdrawn by the same Director as it did not meet the District’s population variance requirements.

### Public Plan 102

Director Ames submitted Public Plan 102. It was based on Plan C and primarily focused on changes to District 6.

### Public Plan 103

Director Allen submitted Public Plan 103. It used Plan A as a base, and incorporated input from Director Ames from Public Plan 102, and focused on Districts 1 and 6.

### Public Plan 104

A member of the public submitted Public Plan 104. The goal of the map was to maintain the geographic integrity of cities and counties to the extent practicable.

### Plan E2

Plan E2 was developed to incorporate detailed input from the BART Board of Directors and members of the public from the Regular Board Meeting on February 24, 2022. Plan E2 was adopted by the BART Board of Directors on March 10, 2022. The remainder of this report breaks down the composition, boundaries, and general information regarding this plan.

Comment	Director/Public	Plan E2
Pacific Heights	Vice President Li	✓
Marina District	Vice President Li	✓
Increased Latino influence, D9	Director Dufty	✓
W Oakland to D7	Directors Simon, Dufty, McPartland, Li	✓
W Oakland, MacArthur in D7	Director Simon	✓
Oakland, African American pop	Director Simon	✓
District 4: Urban Core District	Director Raburn	✓

## Adoption of New Election Districts

Plan E2 was adopted by the BART Board of Directors on March 10, 2022, with a vote of 7 to 1. The adoption of the new election districts can be found in [Exhibit 2: Resolution No. 5509](#). Plan E2 was developed to incorporate feedback from the BART Board of Directors and members of the public.

## 4. POPULATION SUMMARY OF FINAL ELECTION DISTRICTS

Election districts are redrawn every ten years following the U.S. Census.

According to the U.S. Census, the total population within BART's Election districts is 3,726,530. There are nine BART Election districts and the 2022 ideal population for each new district is 414,059.

During the past ten years, the total population within BART's jurisdiction increased by 361,999 and the ideal district population increased by approximately 40,000 per district.



# 5. 2020 CENSUS SUMMARY DATA BY 2022 BART ELECTION DISTRICTS

## Population and Race/Ethnicity Data by District

District Number (Plan E2)	Total Pop	Latino	Latino %	White	White %	Black	Black %	Native American	Native American %	Asian	Asian %	Hawaiian/Pac Islander	Hawaiian/Pac Islander %	Other	Other %	Two or More Races	Two or More Races %
<b>Total</b>	3,726,530	846,063	22.7%	1,269,441	34.1%	330,986	8.9%	26,480	0.7%	1,134,525	30.4%	26,271	0.7%	49,441	1.3%	43,323	1.2%
<b>District 1</b>	414,241	62,088	15.0%	241,984	58.4%	11,405	2.8%	3,529	0.9%	83,963	20.3%	1,505	0.4%	6,608	1.6%	3,159	0.8%
<b>District 2</b>	414,013	145,478	35.1%	136,522	33.0%	53,035	12.8%	4,923	1.2%	59,137	14.3%	4,032	1.0%	4,950	1.2%	5,936	1.4%
<b>District 3</b>	414,028	121,836	29.4%	127,754	30.9%	51,924	12.5%	2,546	0.6%	94,827	22.9%	1,839	0.4%	7,610	1.8%	5,692	1.4%
<b>District 4</b>	413,886	185,247	44.8%	51,477	12.4%	68,682	16.6%	2,278	0.6%	90,989	22.0%	6,203	1.5%	3,225	0.8%	5,785	1.4%
<b>District 5</b>	414,114	65,022	15.7%	155,515	37.6%	21,185	5.1%	3,532	0.9%	157,352	38.0%	2,125	0.5%	5,192	1.3%	4,191	1.0%
<b>District 6</b>	414,035	79,915	19.3%	64,775	15.6%	15,954	3.9%	2,020	0.5%	238,757	57.7%	4,672	1.1%	3,296	0.8%	4,646	1.1%
<b>District 7</b>	414,080	61,531	14.9%	154,824	37.4%	69,175	16.7%	3,072	0.7%	109,435	26.4%	2,992	0.7%	6,529	1.6%	6,522	1.6%
<b>District 8</b>	414,072	44,457	10.7%	171,654	41.5%	13,301	3.2%	1,934	0.5%	172,438	41.6%	1,087	0.3%	5,846	1.4%	3,355	0.8%
<b>District 9</b>	414,061	80,489	19.4%	164,936	39.8%	26,325	6.4%	2,646	0.6%	127,627	30.8%	1,816	0.4%	6,185	1.5%	4,037	1.0%

## Citizen Voting Age Population (CVAP) and Race/Ethnicity Data by District

District Number	Total CVAP	Latino	Latino %	White	White %	Black	Black %	Asian	Asian %	Other	Other %
<b>Total</b>	2,491,731	399,330	16.0%	1,124,352	45.1%	258,919	10.4%	674,522	27.1%	34,608	1.4%
<b>District 1</b>	294,119	29,990	10.2%	209,382	71.2%	7,480	2.5%	43,844	14.9%	3,423	1.2%
<b>District 2</b>	264,301	65,415	24.8%	123,582	46.8%	35,947	13.6%	33,979	12.9%	5,378	2.0%
<b>District 3</b>	267,399	50,264	18.8%	110,998	41.5%	41,750	15.6%	60,080	22.5%	4,307	1.6%
<b>District 4</b>	238,108	71,337	30.0%	49,416	20.8%	56,136	23.6%	57,393	24.1%	3,826	1.6%
<b>District 5</b>	255,178	30,240	11.9%	139,043	54.5%	17,098	6.7%	65,760	25.8%	3,037	1.2%
<b>District 6</b>	257,291	47,860	18.6%	67,200	26.1%	15,172	5.9%	123,487	48.0%	3,572	1.4%
<b>District 7</b>	290,887	29,943	10.3%	131,547	45.2%	54,054	18.6%	71,326	24.5%	4,017	1.4%
<b>District 8</b>	330,065	29,936	9.1%	152,164	46.1%	11,628	3.5%	132,812	40.2%	3,525	1.1%
<b>District 9</b>	294,383	44,345	15.1%	141,020	47.9%	19,654	6.7%	85,841	29.2%	3,523	1.2%



## 6. CITIZEN VOTING AGE POPULATION (CVAP) CHANGES BY DISTRICT

The following tables detail the changes made to each district compared to 2011 Districts.

### District 1 CVAP Changes

Map Adopted 2022, District 1: Pop. from 2011 Districts	Total Population	Percent Population
<b>Total</b>	<b>294,119</b>	<b>100.0%</b>
<b>District 1</b>	<b>226,505</b>	<b>77.0%</b>
<b>District 2</b>	<b>28,112</b>	<b>9.6%</b>
<b>District 3</b>	<b>39,502</b>	<b>13.4%</b>

*Figure 1 District 1 maintains 77.0% of CVAP, takes 9.6% from District 2, and 13.4% from District 3 compared to the 2011 districts.*

### District 2 CVAP Changes

Map Adopted 2022, District 2: Pop. from 2011 Districts	Total Population	Percent Population
<b>Total</b>	<b>264,301</b>	<b>100.0%</b>
<b>District 1</b>	<b>25,888</b>	<b>9.8%</b>
<b>District 2</b>	<b>238,413</b>	<b>90.2%</b>

*Figure 2 District 2 maintains 90.2% of CVAP and takes 9.8% from the District 1 compared to the 2011 districts.*

### District 3 CVAP Changes

Map Adopted 2022, District 3: Pop. from 2011 Districts	Total Population	Percent Population
<b>Total</b>	<b>267,399</b>	<b>100.0%</b>
<b>District 1</b>	<b>622</b>	<b>0.2%</b>
<b>District 3</b>	<b>95,378</b>	<b>35.7%</b>
<b>District 7</b>	<b>171,399</b>	<b>64.1%</b>

*Figure 3 District 3 maintains 35.7% of CVAP, takes 64.1% from the District 7, and 0.2% from District 1 compared to the 2011 districts.*

### District 4 CVAP Changes

Map Adopted 2022, District 4: Pop. from 2011 Districts	Total Population	Percent Population
<b>Total</b>	<b>238,108</b>	<b>100.0%</b>
<b>District 3</b>	<b>81,079</b>	<b>34.1%</b>

District 4	111,483	46.8%
District 5	43,393	18.2%
District 6	2,153	0.9%

Figure 4 District 4 maintains 46.8% of CVAP, takes 34.1% from District 3, 18.2% from District 5, and 0.9% from District 6 compared to the 2011 districts.

## District 5 CVAP Changes

Map Adopted 2022, District 5: Pop. from 2011 Districts	Total Population	Percent Population
Total	255,178	100.0%
District 1	32,334	12.7%
District 3	8,453	3.3%
District 5	214,384	84.0%
District 6	7	0.0%

Figure 5 District 5 maintains 84.0% of CVAP, takes 12.7% from District 1, 3.3% from District 3, and 0.0% District 6 (7 persons) compared to the 2011 districts.

## District 6 CVAP Changes

Map Adopted 2022, District 6: Pop. from 2011 Districts	Total Population	Percent Population
Total	257,291	100.0%
District 5	12,336	4.8%
District 6	244,955	95.2%

Figure 6 District 6 maintains 95.2% of CVAP and takes 4.8% from District 5 compared to the 2011 districts.

## District 7 CVAP Changes

Map Adopted 2022, District 7: Pop. from 2011 Districts	Total Population	Percent Population
Total	290,887	100.0%
District 3	60,607	20.8%
District 4	153,403	52.7%
District 7	74,791	25.7%
District 8	1,563	0.5%
District 9	523	0.2%

Figure 7 District 7 maintains 25.7% of CVAP, takes 52.7% from District 4, 20.8% from District 3, 0.5% from District 8, and 0.2% from District 9 compared to the 2011 districts.

## District 8 CVAP Changes

Map Adopted 2022, District 8: Pop. from 2011 Districts	Total Population	Percent Population
<b>Total</b>	<b>330,065</b>	<b>100.0%</b>
<b>District 7</b>	<b>17</b>	<b>0.0%</b>
<b>District 8</b>	<b>276,859</b>	<b>83.9%</b>
<b>District 9</b>	<b>53,189</b>	<b>16.1%</b>

*Figure 8 District 8 maintains 83.9% of CVAP, takes 16.1% from District 9, and 0.0% from District 7 (17 persons) compared to the 2011 districts.*

## District 9 CVAP Changes

Map Adopted 2022, District 9: Pop. from 2011 Districts	Total Population	Percent Population
<b>Total</b>	<b>294,383</b>	<b>100.0%</b>
<b>District 7</b>	<b>24,645</b>	<b>8.4%</b>
<b>District 8</b>	<b>25,156</b>	<b>8.5%</b>
<b>District 9</b>	<b>244,582</b>	<b>83.1%</b>

*Figure 9 District 9 maintains 83.1% of CVAP, takes 8.5% from District 8, and 8.4% from District 7 compared to the 2011 districts.*

## 7. POPULATION CHANGES BY DISTRICT

The following tables break down the changes made to each district from the 2010 Districts.

### District 1 Population Changes

Map Adopted 2022, District 1: Pop. from 2011 Districts	Total Population	Percent Population
<b>Total</b>	<b>414,241</b>	<b>100.0%</b>
<b>District 1</b>	<b>311,204</b>	<b>75.1%</b>
<b>District 2</b>	<b>49,473</b>	<b>11.9%</b>
<b>District 3</b>	<b>53,564</b>	<b>12.9%</b>

*Figure 10 District 1 maintains 75.1% of its population, takes 11.9% from District 2, and 12.9% from District 3 compared to the 2011 districts.*

### District 2 Population Changes

Map Adopted 2022, District 2: Pop. from 2011 Districts	Total Population	Percent Population
<b>Total</b>	<b>414,013</b>	<b>100.0%</b>
<b>District 1</b>	<b>35,491</b>	<b>8.6%</b>
<b>District 2</b>	<b>378,522</b>	<b>91.4%</b>

*Figure 11 District 2 maintains 91.4% of its population and takes 8.6% from the District 1 compared to the 2011 districts.*

### District 3 Population Changes

Map Adopted 2022, District 3: Pop. from 2011 Districts	Total Population	Percent Population
<b>Total</b>	<b>414,028</b>	<b>100.0%</b>
<b>District 1</b>	<b>718</b>	<b>0.2%</b>
<b>District 3</b>	<b>129,474</b>	<b>31.3%</b>
<b>District 7</b>	<b>283,836</b>	<b>68.6%</b>

*Figure 12 District 3 maintains 31.3% of its population, takes 68.6% from District 7, and 0.2% from District 1 compared to the 2011 districts.*

### District 4 Population Changes

Map Adopted 2022, District 4: Pop. from 2011 Districts	Total Population	Percent Population
<b>Total</b>	<b>413,886</b>	<b>100.0%</b>
<b>District 3</b>	<b>129,272</b>	<b>31.2%</b>
<b>District 4</b>	<b>202,023</b>	<b>48.8%</b>

District 5	79,228	19.1%
District 6	3,363	0.8%

Figure 13 District 4 maintains 48.8% of its population, takes 31.2% from District 3, 19.1% from District 5, and 0.8% from District 6 compared to the 2011 districts.

## District 5 Population Changes

Map Adopted 2022, District 5: Pop. from 2011 Districts	Total Population	Percent Population
Total	414,114	100.0%
District 1	64,071	15.5%
District 3	10,877	2.6%
District 5	339,153	81.9%
District 6	13	0.0%

Figure 14 District 5 maintains 81.9% of its population, takes 15.5% from District 1, 2.6% from District 3, and 0.0% from District 6 (13 persons) compared to the 2011 districts.

## District 6 Population Changes

Map Adopted 2022, District 6: Pop. from 2011 Districts	Total Population	Percent Population
Total	414,035	100.0%
District 5	18,363	4.4%
District 6	395,672	95.6%

Figure 15 District 6 maintains 95.6% of its population and takes 4.4% from District 5 compared to the 2011 districts.

## District 7 Population Changes

Map Adopted 2022, District 7: Pop. from 2011 Districts	Total Population	Percent Population
Total	414,080	100.0%
District 3	79,480	19.2%
District 4	216,082	52.2%
District 7	115,372	27.9%
District 8	2,201	0.5%
District 9	945	0.2%

Figure 16 District 7 maintains 27.9% of its population, takes 52.2% from District 4, 19.2% from District 3, 0.5% from District 8, and 0.2% from District 9 compared to the 2011 districts.

## District 8 Population Changes

Map Adopted 2022, District 8: Pop. from 2011 Districts	Total Population	Percent Population
<b>Total</b>	<b>414,072</b>	<b>100.0%</b>
<b>District 7</b>	<b>59</b>	<b>0.0%</b>
<b>District 8</b>	<b>346,684</b>	<b>83.7%</b>
<b>District 9</b>	<b>67,329</b>	<b>16.3%</b>

*Figure 17 District 8 maintains 83.7% of its population, takes 16.3% from District 9, and 0.0% from District 7 (59 persons) compared to the 2011 districts.*

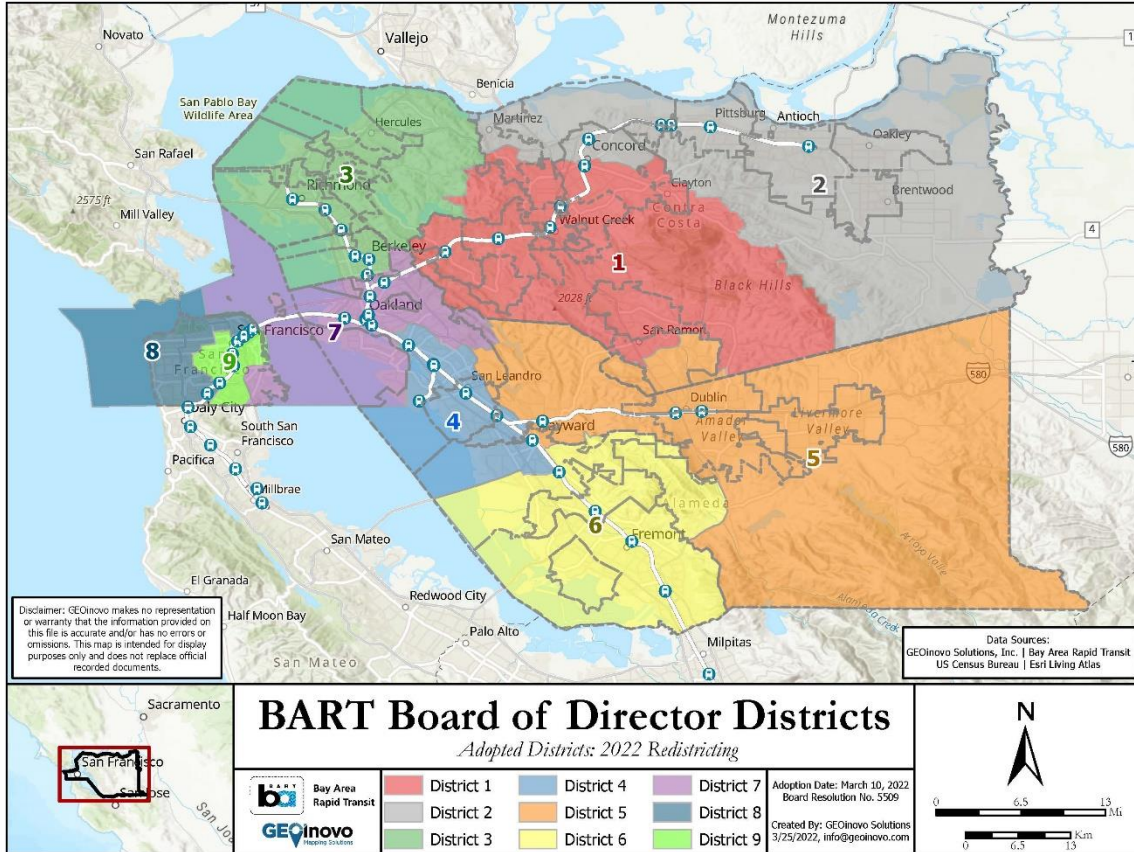
## District 9 Population Changes

Map Adopted 2022, District 9: Pop. from 2011 Districts	Total Population	Percent Population
<b>Total</b>	<b>414,061</b>	<b>100.0%</b>
<b>District 7</b>	<b>43,373</b>	<b>10.5%</b>
<b>District 8</b>	<b>34,805</b>	<b>8.4%</b>
<b>District 9</b>	<b>335,883</b>	<b>81.1%</b>

*Figure 18 District 9 maintains 81.1% of its population, takes 8.4% from District 8, and 10.5% from District 7 compared to the 2011 districts.*

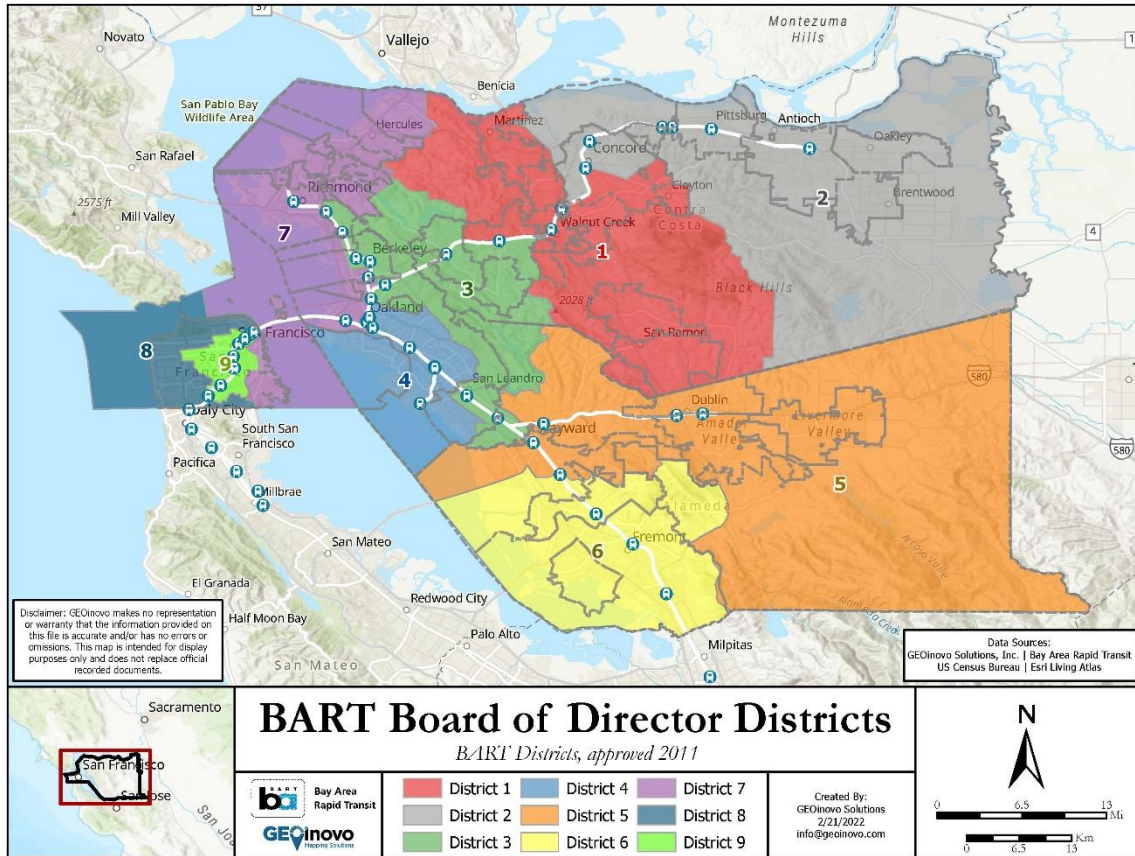
# 8. MAP OF ELECTION DISTRICTS ADOPTED MARCH 10, 2022

## 8.1. MAP ADOPTED MARCH 10, 2022





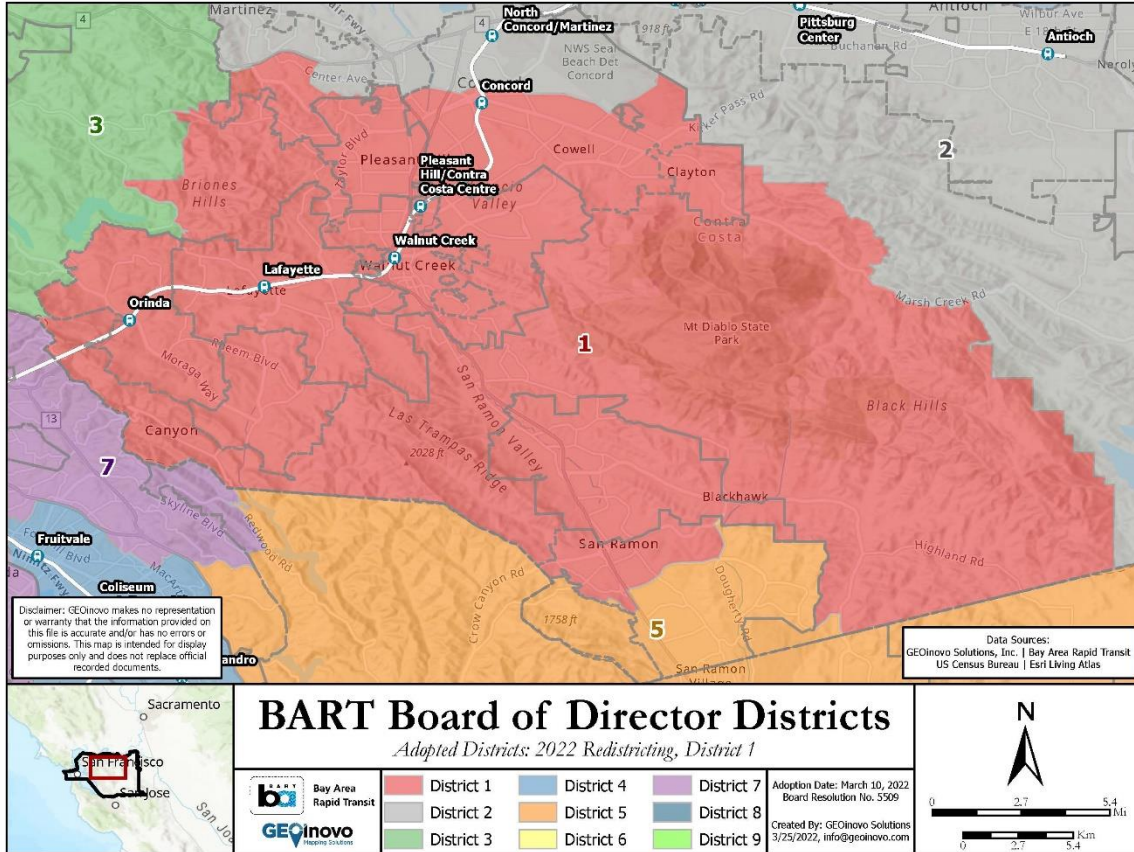
## 8.2. PREVIOUS DISTRICT MAP





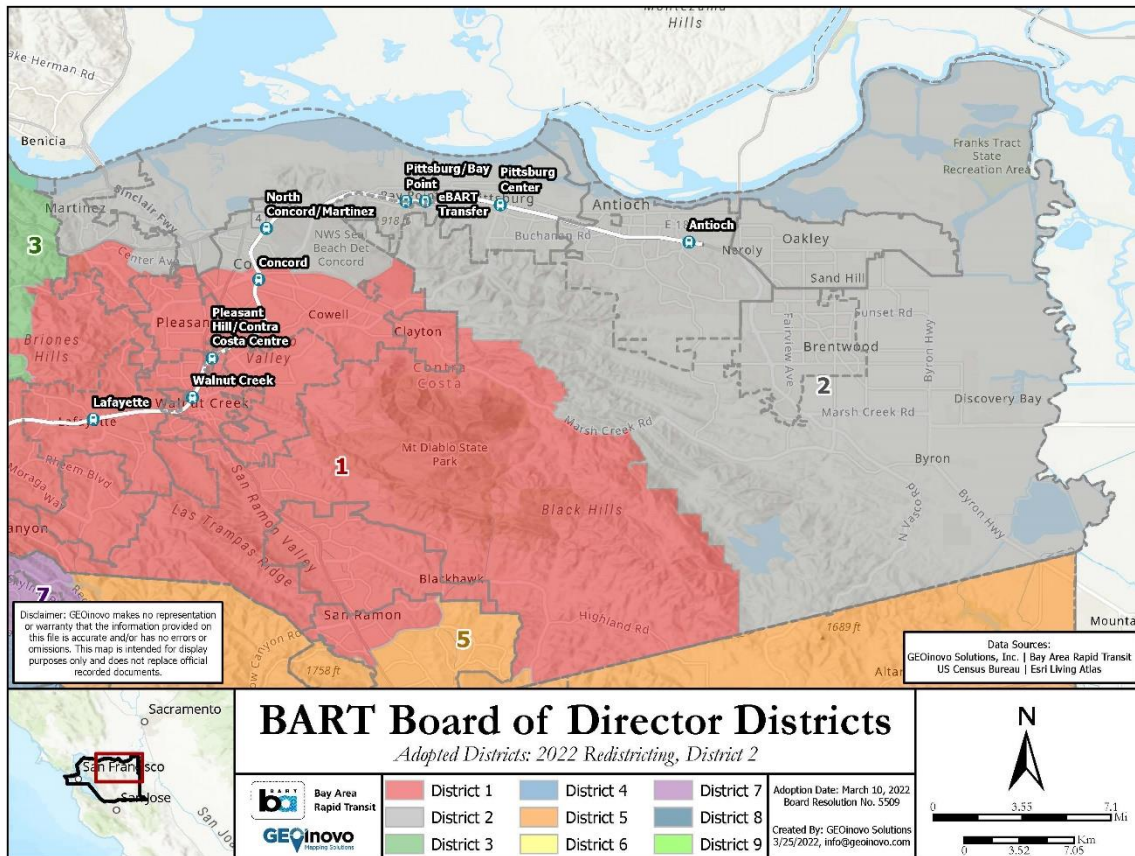
# 9. MAPS AND DESCRIPTIONS OF EACH ELECTION DISTRICT

## District 1 Map & Description



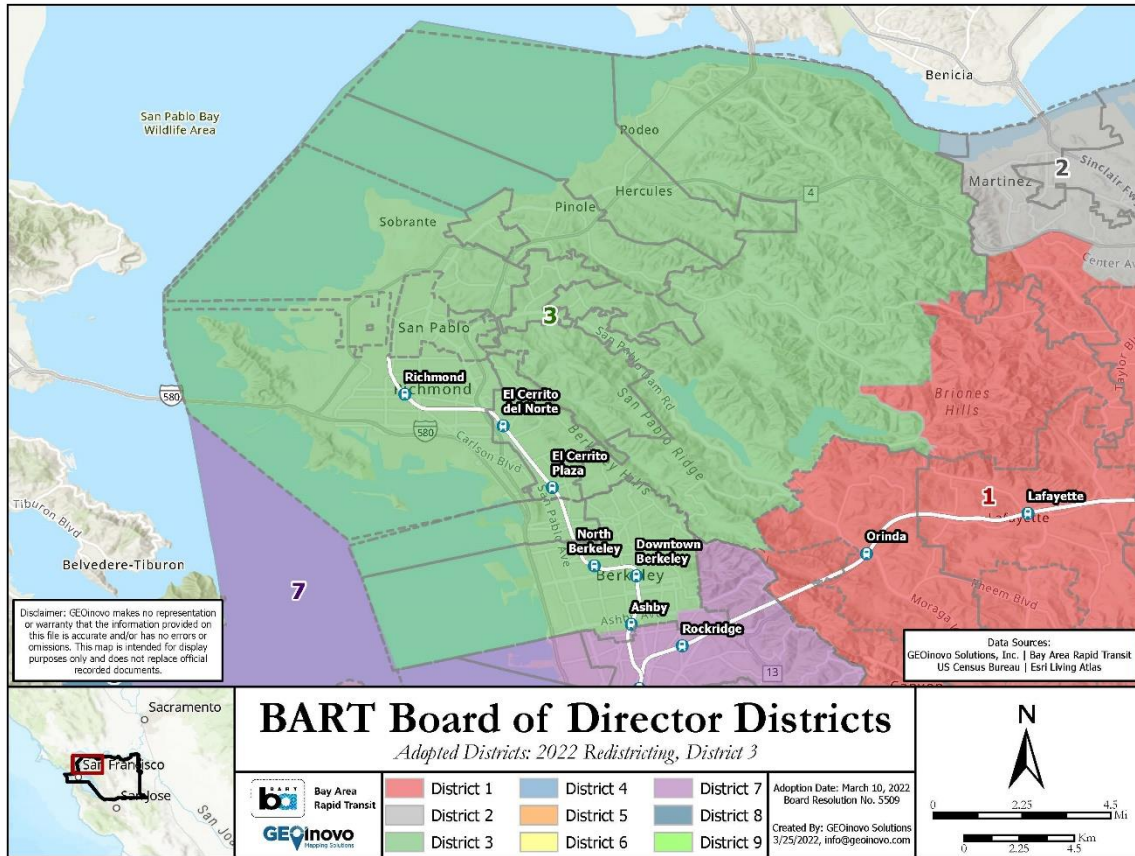
District 1 is in Contra Costa County and includes the Southern portion of the City of Martinez, Pleasant Hill, Walnut Creek, the City of Danville, the Northern part of the City of San Ramon, the City of Lafayette, the Southern part of the City of Concord, including Cowell, Four Corners, and Meinert, the City of Moraga, the City of Orinda, and the City of Clayton.

## District 2 Map & Description



District 2 is in Contra Costa County and includes the City of Pittsburg, the City of Antioch, the City of Brentwood, the City of Oakley, the Northeastern part of the City of Concord including NWS Seal Beach Det Concord, and the Northern part of the City of Martinez including the unincorporated communities of Mountain View and Vine Hill.

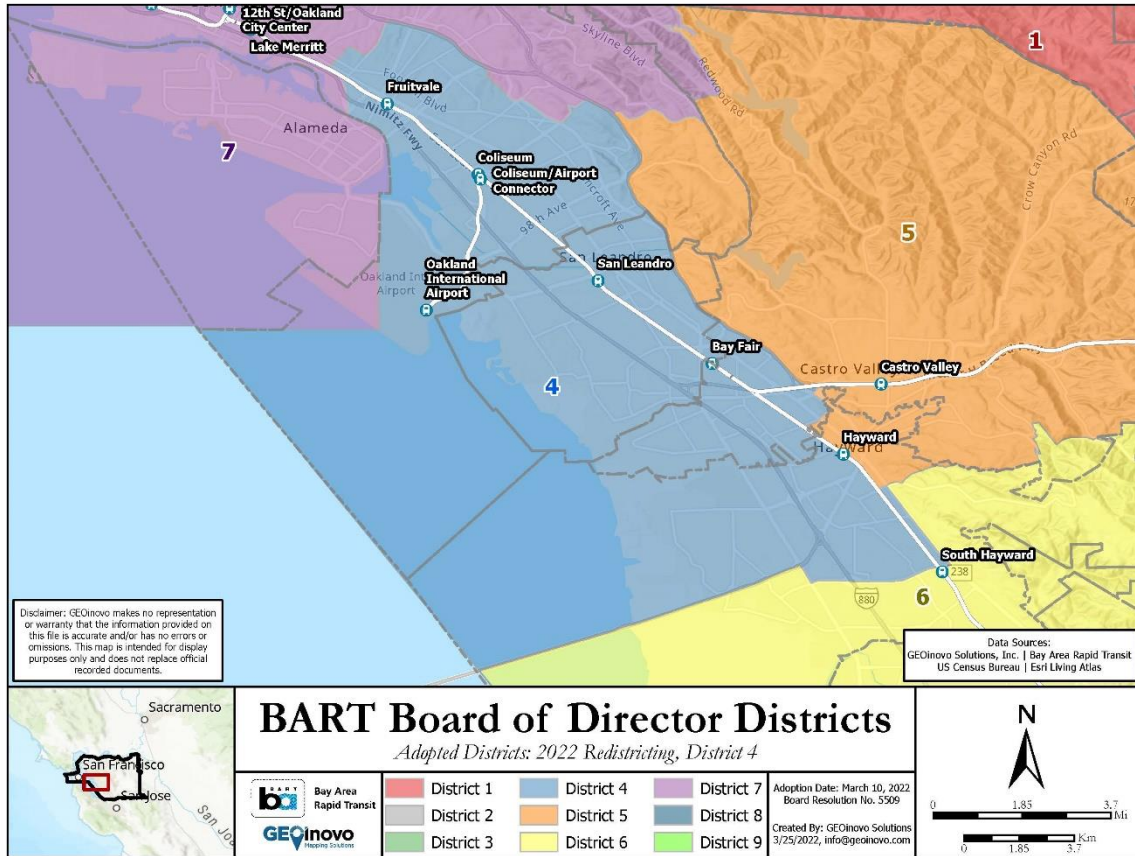
## District 3 Map & Description



District 3 is in both Contra Costa and Alameda Counties and includes the City of Hercules, the City of Pinole, the City of San Pablo, the City of Richmond, the City of El Cerrito, the City of Albany, the majority of the City of Berkeley including the University of California Berkeley and excepting a few neighborhoods to the South of Ashby Ave, and unincorporated parts of Contra Costa County including North Richmond and El Sobrante.

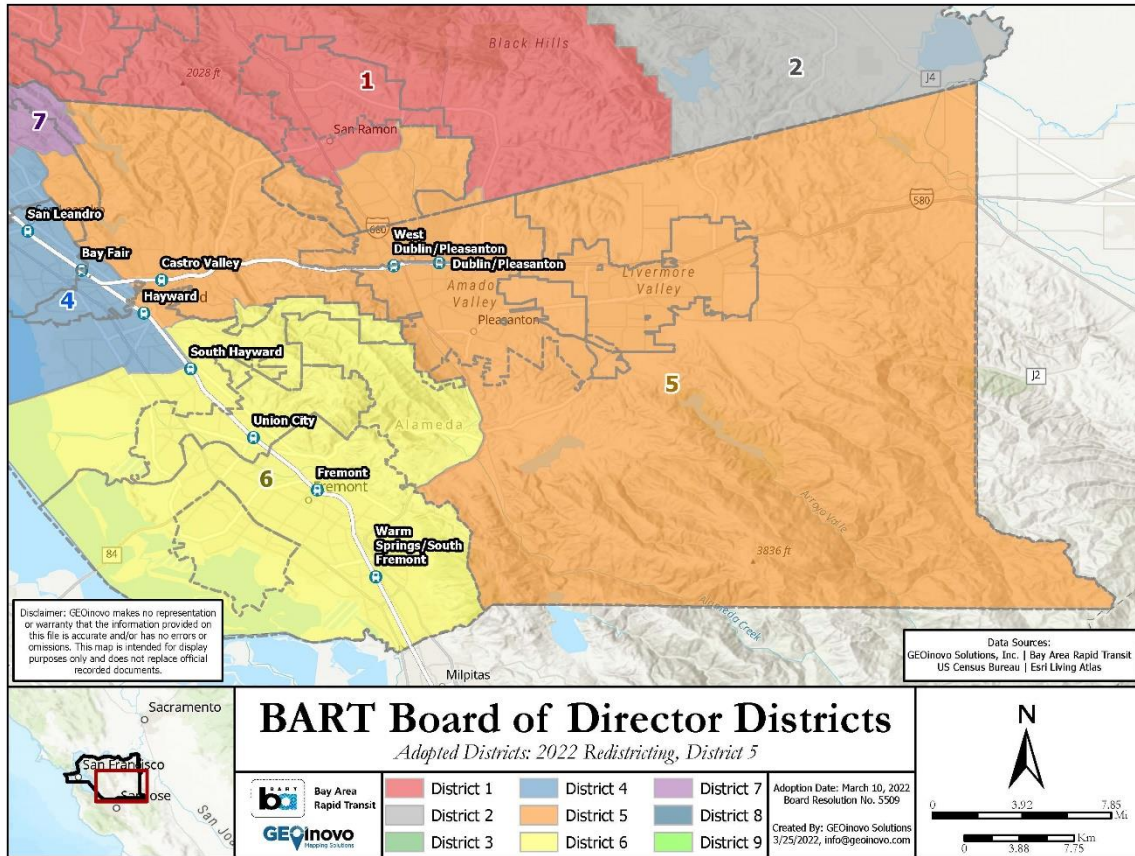


## District 4 Map & Description



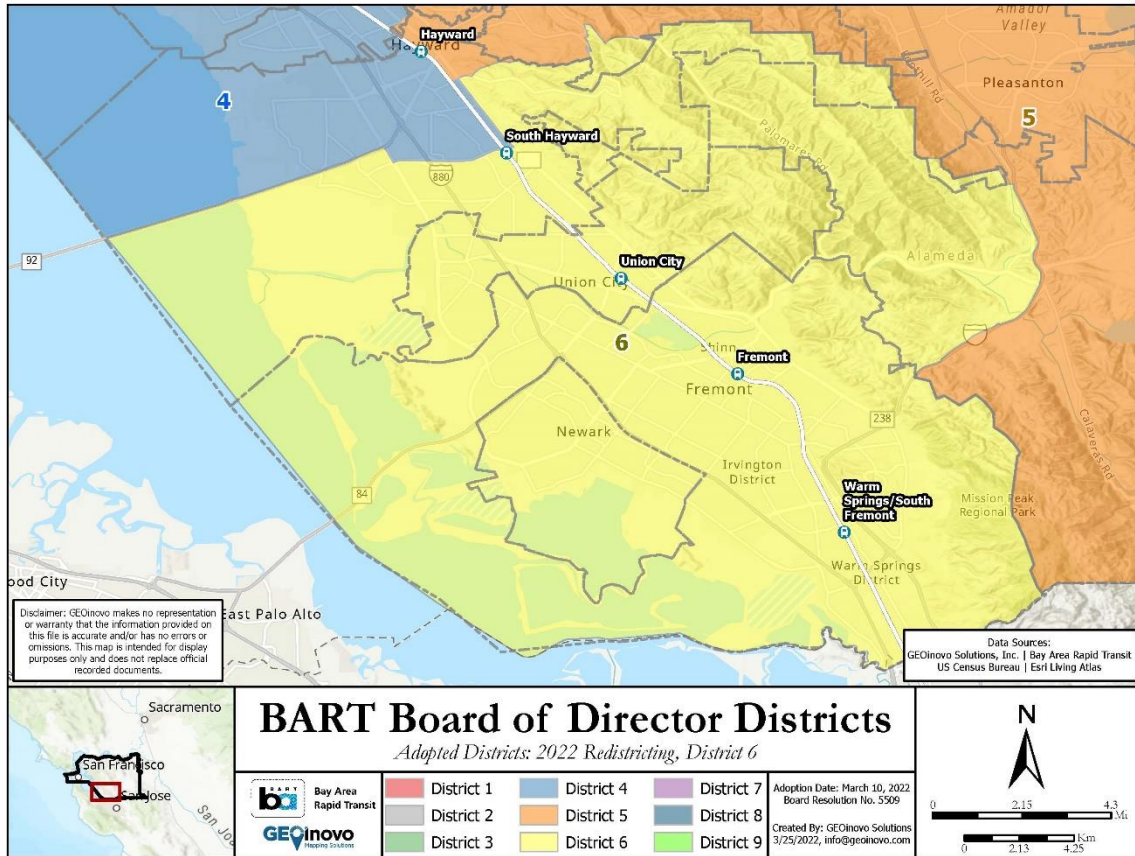
District 4 is an urban core district in Alameda County and includes the Oakland neighborhoods of Melrose, Eastmont, Elmhurst, and Oakland International Airport. The district also includes Northwest Hayward, including Hayward Executive Airport, Hayward Regional Shoreline, and Mt Eden. Other points of interest in District 4 include Ashland, San Lorenzo, the Monarch Bay Golf Club, and San Leandro west of Highway 580.

## District 5 Map & Description



District 5 is in Alameda and Contra Costa Counties and includes a portion of the City of Hayward ranging from the Castro Valley BART station in the North to the Hayward station in the South. Major places and landmarks in this area include the Bishop Ranch Regional Open Space, Lake Chabot Regional Park, Knowland Park, Fairview, Sunol Regional Wilderness, and San Antonio Reservoir. District 5 also includes the City of Pleasanton except for a portion near Kilkare Woods, the City of Livermore, the City of Dublin, the Southeastern part of San Ramon, and rural areas of east Alameda County.

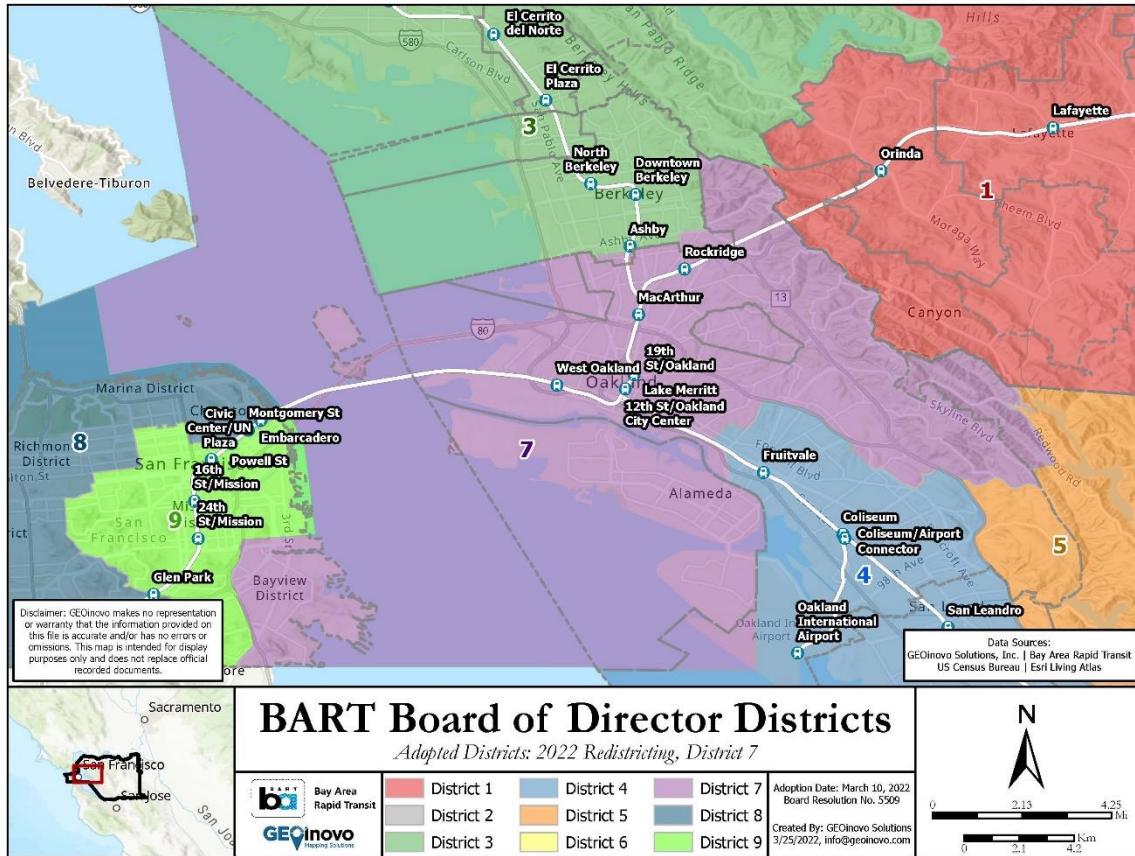
## District 6 Map & Description



District 6 is in Alameda County and includes the City of Fremont, Union City, the City of Newark, and the Southern part of the City of Hayward. Major landmarks include Ohlone College, Mission San Jose District, the Vargas Plateau, Pleasanton Ridge Regional Park, California State University East Bay, TPC Stonebrae Country Club and surrounding neighborhoods, Garin Regional Park, and Eden Landing Ecological Reserve.

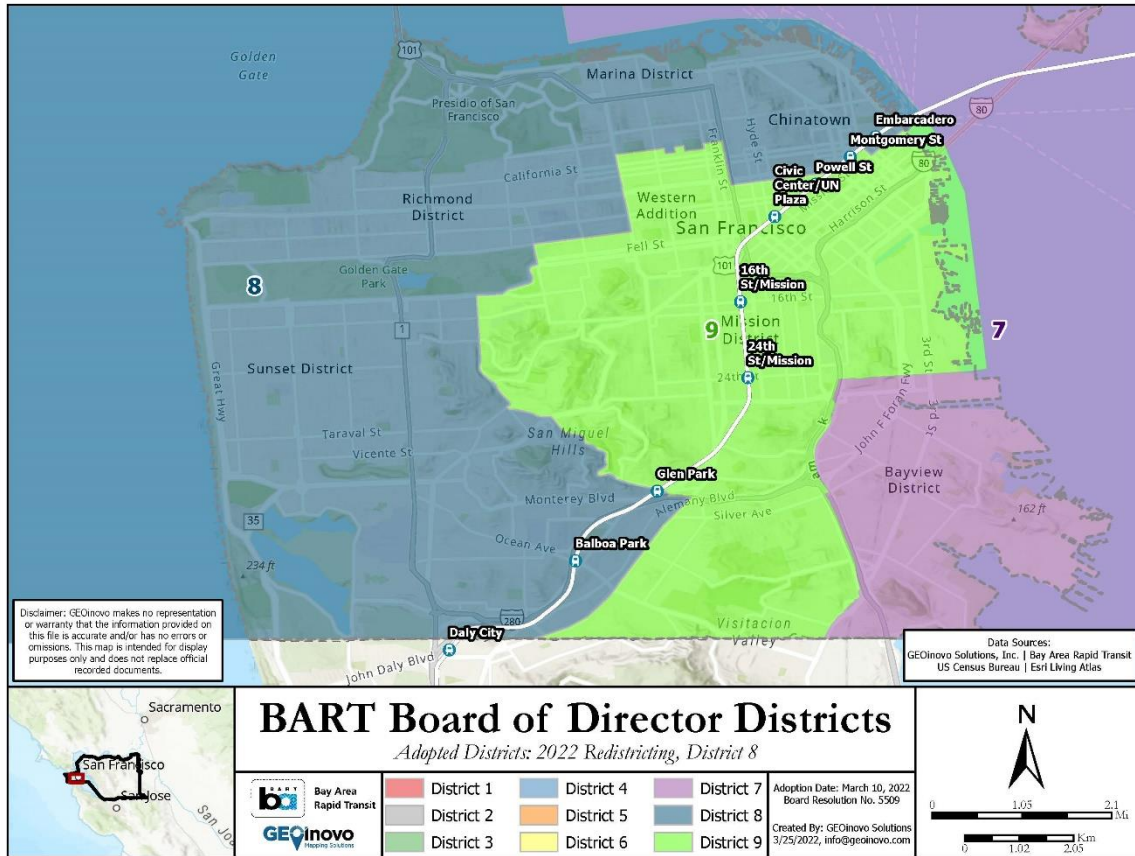


## District 7 Map & Description



District 7 is in Alameda and San Francisco Counties and includes the Northern portion of Oakland including the communities of West Oakland, the City of Piedmont, the City of Emeryville, the City of Alameda, the Bayview District of San Francisco, and Treasure Island. Places of interest in District 7 include Shoreline Park, Robert Crown Memorial State Beach, Mills College, Leona Canyon Regional Open Space, Joaquin Miller Park, and Claremont Canyon Regional Preserve.

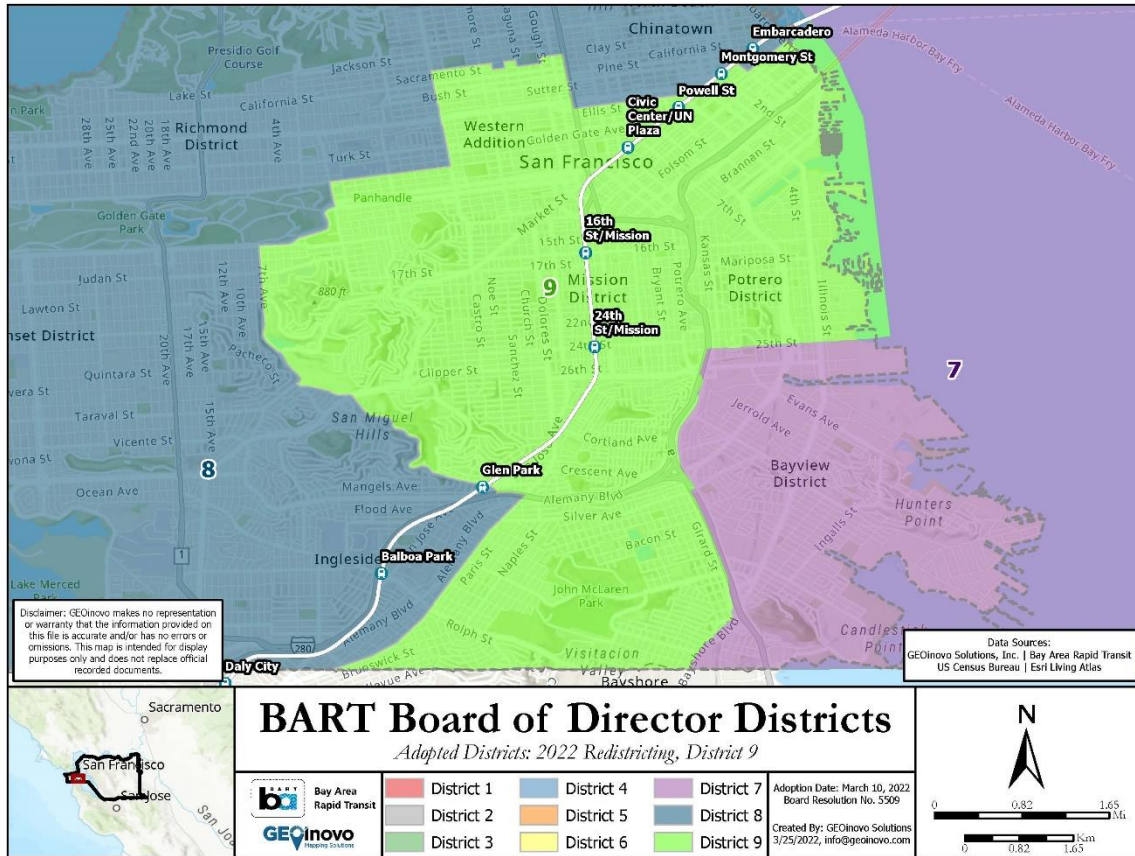
## District 8 Map & Description



District 8 is in San Francisco County and includes the following neighborhoods and points of interest in San Francisco: North Beach, Chinatown, Marina District, Fort Winfield Scott, Richmond District, Sunset District, Ingleside, the Golden Gate Bridge, and the world-famous Lombard St.



## District 9 Map & Description



District 9 is in San Francisco County and includes the following neighborhoods and points of interest in San Francisco: Western Addition, Twin Peaks, Diamond Heights, Glen Canyon Park, St Mary’s Recreation Center, Bernal Heights Park, John McLaren Park and surrounding neighborhoods, Union Square, Mission District, Potrero District, Pier 50, and the Salesforce Transit Center.

## 10. BART STATIONS BY 2022 ELECTION DISTRICTS

### District 1 BART Stations

- Orinda
- Lafayette
- Walnut Creek
- Pleasant Hill/Contra Costa Centre
- Concord (shared with District 2)

### District 2 BART Stations

- Concord (shared with District 1)
- North Concord/Martinez
- Pittsburg/Bay Point
- Antioch
- Pittsburg Center
- eBART Transfer

### District 3 BART Stations

- Richmond
- El Cerrito del Norte
- El Cerrito Plaza
- North Berkeley
- Downtown Berkeley
- Ashby (shared with District 7)

### District 4 BART Stations

- Fruitvale
- Coliseum
- Coliseum/Airport Connector
- Oakland International Airport
- San Leandro
- Bay Fair
- Hayward (shared with District 5)
- South Hayward (shared with District 6)

### District 5 BART Stations

- Hayward (shared with District 4)
- Castro Valley
- West Dublin/Pleasanton
- Dublin/Pleasanton

## District 6 BART Stations

- Fremont
- South Hayward (shared with District 4)
- Union City
- Warm Springs/South Fremont

## District 7 BART Stations

- Ashby (shared with District 3)
- Rockridge
- MacArthur
- 19<sup>th</sup> St/Oakland
- 12<sup>th</sup> St/Oakland City Center
- Lake Merritt
- West Oakland

## District 8 BART Stations

- Montgomery St (shared with District 9)
- Embarcadero (shared with District 9)
- Powell St (shared with District 9)
- Glen Park (shared with District 9)
- Balboa Park

## District 9 BART Stations

- Montgomery St (shared with District 8)
- Embarcadero (shared with District 8)
- Powell St (shared with District 8)
- Civic Center/UN Plaza
- 16<sup>th</sup> St/Mission
- 24<sup>th</sup> St/Mission
- Glen Park (shared with District 8)

# 11. METES AND BOUNDS DEFINITION OF ELECTION DISTRICTS

## District 1

All of that portion of Contra Costa County bounded and described as follows: Beginning at the point of intersection of Lomas Cantadas and the Alameda/Contra Costa county line, and proceeding easterly along Lomas Cantadas to the Orinda city line, and proceeding northerly along the Orinda city line to Cam Pablo, and proceeding northerly along Cam Pablo to Bear Creek Rd, and proceeding northerly along Bear Creek Rd to the Orinda city line, and proceeding easterly along the Orinda city line to nonvisible boundary, and proceeding northerly along nonvisible boundary to the Lafayette city line, and proceeding northerly along the Lafayette city line to nonvisible boundary, and proceeding northerly along nonvisible boundary to Happy Valley Rd, and proceeding easterly along Happy Valley Rd to Bear Creek Rd, and proceeding northerly along Bear Creek Rd to Parcel Lines Comprising Board Approved, and proceeding easterly along Parcel Lines Comprising Board Approved to Alhambra Creek Rd, and proceeding northerly along Alhambra Creek Rd to the Alhambra Valley census designated place line, and proceeding westerly along the Alhambra Valley census designated place line to nonvisible boundary, and proceeding northerly along nonvisible boundary to the Martinez city line, and proceeding easterly along the Martinez city line to nonvisible boundary, and proceeding easterly along nonvisible boundary to Vaca Creek Rd, and proceeding northerly along Vaca Creek Rd to the Martinez city line, and proceeding northerly along the Martinez city line to Stone View Ct, and proceeding easterly along Stone View Ct to the Martinez city line, and proceeding northerly along the Martinez city line to Burlington Northern Santa Fe Rlwy, and proceeding easterly along Burlington Northern Santa Fe Rlwy to Franklin Canyon Rd, and proceeding easterly along Franklin Canyon Rd to Alhambra Ave, and proceeding northerly along Alhambra Ave to State Rte 4, and proceeding easterly along State Rte 4 to Morello Ave, and proceeding southerly along Morello Ave to nonvisible boundary, and proceeding southerly along nonvisible boundary to Morello Ave, and proceeding southerly along Morello Ave to Chilpancingo Pkwy, and proceeding easterly along Chilpancingo Pkwy to the Pacheco/Pleasant Hill census designated place/city line, and proceeding easterly along the Pacheco/Pleasant Hill census designated place/city line to the Pleasant Hill city line, and proceeding southerly along the Pleasant Hill city line to the Concord city line, and proceeding easterly along the Concord city line to Concord Ave, and proceeding easterly along Concord Ave to Bonifacio St, and proceeding easterly along Bonifacio St to Beach St, and proceeding southerly along Beach St to Pacheco St, and proceeding easterly along Pacheco St to Parkside Dr, and proceeding southerly along Parkside Dr to Willow Pass Rd, and proceeding easterly along Willow Pass Rd to Farm Bureau Rd, and proceeding easterly along Farm Bureau Rd to Concord Blvd, and proceeding easterly along Concord Blvd to Bailey Rd, and proceeding northerly along Bailey Rd to the Concord city line, and proceeding northerly along the Concord city line to Bailey Rd, and proceeding easterly along Bailey Rd to the Concord city line, and proceeding easterly along the Concord city line to the Clayton city line, and proceeding easterly along the Clayton city line to nonvisible boundary, and proceeding easterly along nonvisible boundary to unnamed Local road, and proceeding southerly

along unnamed Local road to nonvisible boundary, and proceeding southerly along nonvisible boundary to unnamed Local road, and proceeding westerly along unnamed Local road to nonvisible boundary, and proceeding southerly along nonvisible boundary to unnamed Local road, and proceeding southerly along unnamed Local road to Bragdon Way, and proceeding westerly along Bragdon Way to Marsh Creek Rd, and proceeding easterly along Marsh Creek Rd to Marsh Crk, and proceeding easterly along Marsh Crk to Sycamore Springs Rd, and proceeding southerly along Sycamore Springs Rd to Sycamore Crk, and proceeding southerly along Sycamore Crk to nonvisible boundary, and proceeding easterly along nonvisible boundary to the Alameda/Contra Costa county line, and proceeding westerly along the Alameda/Contra Costa county line to Cam Tassajara, and proceeding northerly along Cam Tassajara to Windemere Pkwy, and proceeding westerly along Windemere Pkwy to the San Ramon city line, and proceeding northerly along the San Ramon city line to the San Ramon/Camino Tassajara city/census designated place line, and proceeding westerly along the San Ramon/Camino Tassajara city/census designated place line to the San Ramon/Danville city/town line, and proceeding westerly along the San Ramon/Danville city/town line to Crow Canyon Rd, and proceeding northerly along Crow Canyon Rd to Sentry Ln, and proceeding westerly along Sentry Ln to Crow Canyon Rd, and proceeding southerly along Crow Canyon Rd to Reedland Cir, and proceeding westerly along Reedland Cir to Goldenrod Ln, and proceeding southerly along Goldenrod Ln to physical line, and proceeding southerly along physical line to Dougherty Rd, and proceeding southerly along Dougherty Rd to Bollinger Canyon Rd, and proceeding westerly along Bollinger Canyon Rd to Bollinger Cyn, and proceeding westerly along Bollinger Cyn to I-680, and proceeding southerly along I-680 to nonvisible boundary, and proceeding westerly along nonvisible boundary to Morgan Dr, and proceeding westerly along Morgan Dr to the San Ramon city line, and proceeding westerly along the San Ramon city line to Morgan Dr, and proceeding westerly along Morgan Dr to Derby Dr, and proceeding southerly along Derby Dr to unnamed Local road, and proceeding southerly along unnamed Local road to the San Ramon city line, and proceeding northerly along the San Ramon city line to the Norris Canyon/San Ramon census designated place/city line, and proceeding northerly along the Norris Canyon/San Ramon census designated place/city line to the Alameda/Contra Costa county line, and proceeding northerly along the Alameda/Contra Costa county line to the point of beginning.

## District 2

All of that portion of Alameda County bounded and described as follows: Beginning at the point of intersection of the Contra Costa/Alameda county line and Vasco Rd, and proceeding easterly along the Contra Costa/Alameda county line to Vasco Rd, and proceeding southerly along Vasco Rd to the point of beginning.

All of that portion of Contra Costa County bounded and described as follows: Beginning at the point of intersection of the Martinez city line and Burlington Northern Santa Fe Rlwy, and proceeding westerly along the Martinez city line to nonvisible boundary, and proceeding westerly along nonvisible boundary to the Solano/Contra Costa county line, and proceeding easterly along the Solano/Contra Costa county line to the Sacramento/Contra Costa county line, and proceeding easterly along the Sacramento/Contra Costa county line to the San Joaquin/Contra Costa county line, and proceeding southerly along the San Joaquin/Contra Costa



county line to nonvisible boundary, and proceeding westerly along nonvisible boundary to shoreline, and proceeding westerly along shoreline to Lindemann Rd, and proceeding southerly along Lindemann Rd to the Alameda/Contra Costa county line, and proceeding westerly along the Alameda/Contra Costa county line to Byron-Bethany Rd, and proceeding westerly along Byron-Bethany Rd to Byron Hwy, and proceeding westerly along Byron Hwy to shoreline, and proceeding westerly along shoreline to the Alameda/Contra Costa county line, and proceeding westerly along the Alameda/Contra Costa county line to nonvisible boundary, and proceeding northerly along nonvisible boundary to Sycamore Crk, and proceeding northerly along Sycamore Crk to Sycamore Springs Rd, and proceeding northerly along Sycamore Springs Rd to Marsh Crk, and proceeding westerly along Marsh Crk to Marsh Creek Rd, and proceeding westerly along Marsh Creek Rd to Bragdon Way, and proceeding easterly along Bragdon Way to unnamed Local road, and proceeding northerly along unnamed Local road to nonvisible boundary, and proceeding northerly along nonvisible boundary to unnamed Local road, and proceeding northerly along unnamed Local road to nonvisible boundary, and proceeding northerly along nonvisible boundary to unnamed Local road, and proceeding northerly along unnamed Local road to nonvisible boundary, and proceeding westerly along nonvisible boundary to the Clayton city line, and proceeding northerly along the Clayton city line to the Concord city line, and proceeding northerly along the Concord city line to Bailey Rd, and proceeding southerly along Bailey Rd to the Concord city line, and proceeding southerly along the Concord city line to Bailey Rd, and proceeding southerly along Bailey Rd to Concord Blvd, and proceeding westerly along Concord Blvd to Farm Bureau Rd, and proceeding northerly along Farm Bureau Rd to Willow Pass Rd, and proceeding westerly along Willow Pass Rd to Parkside Dr, and proceeding northerly along Parkside Dr to Pacheco St, and proceeding westerly along Pacheco St to Beach St, and proceeding northerly along Beach St to Bonifacio St, and proceeding westerly along Bonifacio St to Concord Ave, and proceeding westerly along Concord Ave to the Concord city line, and proceeding southerly along the Concord city line to the Pleasant Hill city line, and proceeding northerly along the Pleasant Hill city line to the Pleasant Hill/Pacheco city/census designated place line, and proceeding northerly along the Pleasant Hill/Pacheco city/census designated place line to Chilpancingo Pkwy, and proceeding westerly along Chilpancingo Pkwy to Morello Ave, and proceeding northerly along Morello Ave to nonvisible boundary, and proceeding easterly along nonvisible boundary to Morello Ave, and proceeding northerly along Morello Ave to State Rte 4, and proceeding westerly along State Rte 4 to Alhambra Ave, and proceeding southerly along Alhambra Ave to Franklin Canyon Rd, and proceeding westerly along Franklin Canyon Rd to Burlington Northern Santa Fe Rlwy, and proceeding westerly along Burlington Northern Santa Fe Rlwy to the point of beginning.

### District 3

All of that portion of Alameda County bounded and described as follows: Beginning at the point of intersection of the Contra Costa/Alameda county line and the San Francisco/Alameda county line, and proceeding easterly along the Contra Costa/Alameda county line to the Oakland/Berkeley city line, and proceeding southerly along the Oakland/Berkeley city line to Domingo Ave, and proceeding southerly along Domingo Ave to Ashby Ave, and proceeding westerly along Ashby Ave to Claremont Ave, and proceeding southerly along Claremont Ave to

Ashby Ave, and proceeding westerly along Ashby Ave to College Ave, and proceeding southerly along College Ave to Woolsey St, and proceeding westerly along Woolsey St to the Oakland/Berkeley city line, and proceeding westerly along the Oakland/Berkeley city line to Fairview St, and proceeding westerly along Fairview St to Baker St, and proceeding northerly along Baker St to 66th St, and proceeding westerly along 66th St to Boise St, and proceeding southerly along Boise St to Harmon St, and proceeding westerly along Harmon St to Idaho St, and proceeding northerly along Idaho St to 65th St, and proceeding westerly along 65th St to the Oakland/Berkeley city line, and proceeding northerly along the Oakland/Berkeley city line to the Emeryville/Berkeley city line, and proceeding westerly along the Emeryville/Berkeley city line to the Oakland/Berkeley city line, and proceeding westerly along the Oakland/Berkeley city line to the San Francisco/Alameda county line, and proceeding northerly along the San Francisco/Alameda county line to the point of beginning.

All of that portion of Contra Costa County bounded and described as follows: Beginning at the point of intersection of the Marin/Contra Costa county line and the San Francisco/Contra Costa county line, and proceeding northerly along the Marin/Contra Costa county line to the Solano/Contra Costa county line, and proceeding easterly along the Solano/Contra Costa county line to nonvisible boundary, and proceeding southerly along nonvisible boundary to the Martinez city line, and proceeding westerly along the Martinez city line to Stone View Ct, and proceeding westerly along Stone View Ct to the Martinez city line, and proceeding westerly along the Martinez city line to Vaca Creek Rd, and proceeding southerly along Vaca Creek Rd to nonvisible boundary, and proceeding westerly along nonvisible boundary to the Martinez city line, and proceeding westerly along the Martinez city line to nonvisible boundary, and proceeding northerly along nonvisible boundary to the Alhambra Valley census designated place line, and proceeding westerly along the Alhambra Valley census designated place line to Alhambra Creek Rd, and proceeding southerly along Alhambra Creek Rd to Parcel Lines Comprising Board Approved, and proceeding southerly along Parcel Lines Comprising Board Approved to Bear Creek Rd, and proceeding southerly along Bear Creek Rd to Happy Valley Rd, and proceeding easterly along Happy Valley Rd to nonvisible boundary, and proceeding southerly along nonvisible boundary to the Lafayette city line, and proceeding southerly along the Lafayette city line to nonvisible boundary, and proceeding southerly along nonvisible boundary to the Orinda city line, and proceeding westerly along the Orinda city line to Bear Creek Rd, and proceeding southerly along Bear Creek Rd to Cam Pablo, and proceeding southerly along Cam Pablo to the Orinda city line, and proceeding southerly along the Orinda city line to Lomas Cantadas, and proceeding westerly along Lomas Cantadas to the Alameda/Contra Costa county line, and proceeding westerly along the Alameda/Contra Costa county line to the San Francisco/Contra Costa county line, and proceeding westerly along the San Francisco/Contra Costa county line to the point of beginning.

## District 4

All of that portion of Alameda County bounded and described as follows: Beginning at the point of intersection of the Alameda/Oakland city line and the San Mateo/Alameda county line, and proceeding easterly along the Alameda/Oakland city line to nonvisible boundary, and proceeding easterly along nonvisible boundary to the Alameda/Oakland city line, and proceeding northerly along the Alameda/Oakland city line to 23rd, and proceeding northerly along 23rd to 23rd Ave, and proceeding northerly along 23rd Ave to 23rd, and proceeding northerly along 23rd to 23rd Ave, and proceeding northerly along 23rd Ave to nonvisible boundary, and proceeding northerly along nonvisible boundary to unnamed Ramp, and proceeding northerly along unnamed Ramp to 23rd Ave, and proceeding northerly along 23rd Ave to 23rd Ave Ovp, and proceeding northerly along 23rd Ave Ovp to E 12th St, and proceeding westerly along E 12th St to 19th Ave, and proceeding northerly along 19th Ave to 19th, and proceeding northerly along 19th to E 22nd St, and proceeding easterly along E 22nd St to 23rd Ave, and proceeding northerly along 23rd Ave to 22nd Ave, and proceeding westerly along 22nd Ave to 23rd, and proceeding northerly along 23rd to E 27th St, and proceeding easterly along E 27th St to 23rd Ave, and proceeding northerly along 23rd Ave to E 30th St, and proceeding westerly along E 30th St to 23rd, and proceeding northerly along 23rd to E 31st St, and proceeding easterly along E 31st St to Ardley Ave, and proceeding northerly along Ardley Ave to I- 580, and proceeding easterly along I- 580 to Sheffield Ave, and proceeding northerly along Sheffield Ave to I- 580, and proceeding easterly along I- 580 to High St, and proceeding westerly along High St to Redding St, and proceeding easterly along Redding St to Birdsall Ave, and proceeding southerly along Birdsall Ave to Camden St, and proceeding southerly along Camden St to unnamed Ramp, and proceeding southerly along unnamed Ramp to Macarthur Blvd, and proceeding southerly along Macarthur Blvd to unnamed Local road, and proceeding easterly along unnamed Local road to Seminary Ave, and proceeding northerly along Seminary Ave to Macarthur Blvd, and proceeding easterly along Macarthur Blvd to 73rd Ave, and proceeding easterly along 73rd Ave to Hillmont Dr, and proceeding northerly along Hillmont Dr to Sunkist Dr, and proceeding easterly along Sunkist Dr to Edwards Ave, and proceeding easterly along Edwards Ave to I- 580, and proceeding easterly along I- 580 to nonvisible boundary, and proceeding easterly along nonvisible boundary to I- 580, and proceeding easterly along I- 580 to nonvisible boundary, and proceeding southerly along nonvisible boundary to the Oakland/San Leandro city line, and proceeding southerly along the Oakland/San Leandro city line to I- 580, and proceeding southerly along I- 580 to the Castro Valley/San Leandro census designated place/city line, and proceeding easterly along the Castro Valley/San Leandro census designated place/city line to the Castro Valley/Ashland census designated place line, and proceeding easterly along the Castro Valley/Ashland census designated place line to the Castro Valley/Cherryland census designated place line, and proceeding southerly along the Castro Valley/Cherryland census designated place line to the Hayward/Cherryland city/census designated place line, and proceeding easterly along the Hayward/Cherryland city/census designated place line to Grove Way, and proceeding southerly along Grove Way to Mission Blvd, and proceeding southerly along Mission Blvd to Grove Way, and proceeding westerly along Grove Way to Western Blvd, and proceeding easterly along Western Blvd to the Cherryland/Hayward census designated place/city line, and proceeding easterly along the Cherryland/Hayward census designated place/city line to nonvisible boundary,



and proceeding southerly along nonvisible boundary to Bay Area Rapid Transit RR, and proceeding easterly along Bay Area Rapid Transit RR to Union Pacific RR, and proceeding southerly along Union Pacific RR to Orchard Ave, and proceeding easterly along Orchard Ave to Mission Blvd, and proceeding southerly along Mission Blvd to Tennyson Rd, and proceeding westerly along Tennyson Rd to W Tennyson Rd, and proceeding westerly along W Tennyson Rd to Hesperian Blvd, and proceeding northerly along Hesperian Blvd to J Jackson St, and proceeding westerly along J Jackson St to Hesperian Blvd, and proceeding northerly along Hesperian Blvd to W Jackson St, and proceeding westerly along W Jackson St to J Atthur Younger (Toll Road), and proceeding westerly along J Atthur Younger (Toll Road) to Clawiter Rd, and proceeding northerly along Clawiter Rd to unnamed Ramp, and proceeding westerly along unnamed Ramp to J Atthur Younger (Toll Road), and proceeding westerly along J Atthur Younger (Toll Road) to San Mateo Brg, and proceeding westerly along San Mateo Brg to the San Mateo/Alameda county line, and proceeding northerly along the San Mateo/Alameda county line to the point of beginning.

## District 5

All of that portion of Alameda County bounded and described as follows: Beginning at the point of intersection of Keller Ave and I- 580, and proceeding easterly along Keller Ave to nonvisible boundary, and proceeding easterly along nonvisible boundary to the Oakland city line, and proceeding northerly along the Oakland city line to Grass Valley Crk, and proceeding easterly along Grass Valley Crk to stream/river, and proceeding easterly along stream/river to Grass Valley Rd, and proceeding southerly along Grass Valley Rd to Redwood Rd, and proceeding northerly along Redwood Rd to Pinehurst Rd, and proceeding easterly along Pinehurst Rd to the Contra Costa/Alameda county line, and proceeding easterly along the Contra Costa/Alameda county line to Vasco Rd, and proceeding easterly along Vasco Rd to the Contra Costa/Alameda county line, and proceeding easterly along the Contra Costa/Alameda county line to the San Joaquin/Alameda county line, and proceeding southerly along the San Joaquin/Alameda county line to the Stanislaus/Alameda county line, and proceeding westerly along the Stanislaus/Alameda county line to the Santa Clara/Alameda county line, and proceeding westerly along the Santa Clara/Alameda county line to the Fremont city line, and proceeding northerly along the Fremont city line to the Fremont/Sunol city/census designated place line, and proceeding northerly along the Fremont/Sunol city/census designated place line to I- 680, and proceeding easterly along I- 680 to Sheridan Rd, and proceeding northerly along Sheridan Rd to Mission Rd, and proceeding easterly along Mission Rd to I- 680, and proceeding easterly along I- 680 to Paloma Rd, and proceeding westerly along Paloma Rd to Vallecitos Rd, and proceeding northerly along Vallecitos Rd to I- 680, and proceeding northerly along I- 680 to the Sunol census designated place line, and proceeding westerly along the Sunol census designated place line to the Pleasanton city line, and proceeding northerly along the Pleasanton city line to Foothill Rd, and proceeding westerly along Foothill Rd to the Pleasanton city line, and proceeding westerly along the Pleasanton city line to nonvisible boundary, and proceeding westerly along nonvisible boundary to the Sunol/Pleasanton census designated place/city line, and proceeding westerly along the Sunol/Pleasanton census designated place/city line to the Hayward/Pleasanton city line, and proceeding northerly along the Hayward/Pleasanton city line

to the Hayward city line, and proceeding northerly along the Hayward city line to the Hayward/Pleasanton city line, and proceeding westerly along the Hayward/Pleasanton city line to the Hayward city line, and proceeding westerly along the Hayward city line to the Hayward/Castro Valley city/census designated place line, and proceeding easterly along the Hayward/Castro Valley city/census designated place line to the Castro Valley census designated place line, and proceeding westerly along the Castro Valley census designated place line to Oak Terrace Rd, and proceeding southerly along Oak Terrace Rd to Five Canyons Pkwy, and proceeding southerly along Five Canyons Pkwy to the Fairview census designated place line, and proceeding easterly along the Fairview census designated place line to nonvisible boundary, and proceeding northerly along nonvisible boundary to Fairview Ave, and proceeding southerly along Fairview Ave to the Hayward/Fairview city/census designated place line, and proceeding westerly along the Hayward/Fairview city/census designated place line to property line, and proceeding westerly along property line to Oakes Dr, and proceeding westerly along Oakes Dr to Campus Dr, and proceeding westerly along Campus Dr to the Hayward/Fairview city/census designated place line, and proceeding westerly along the Hayward/Fairview city/census designated place line to Campus Dr, and proceeding easterly along Campus Dr to powerline, and proceeding westerly along powerline to Carlos Bee Blvd, and proceeding westerly along Carlos Bee Blvd to Mission Blvd, and proceeding southerly along Mission Blvd to Orchard Ave, and proceeding westerly along Orchard Ave to Mission Blvd, and proceeding northerly along Mission Blvd to Orchard Ave, and proceeding westerly along Orchard Ave to Union Pacific RR, and proceeding northerly along Union Pacific RR to Bay Area Rapid Transit RR, and proceeding northerly along Bay Area Rapid Transit RR to nonvisible boundary, and proceeding northerly along nonvisible boundary to the Hayward/Cherryland city/census designated place line, and proceeding westerly along the Hayward/Cherryland city/census designated place line to Western Blvd, and proceeding westerly along Western Blvd to Grove Way, and proceeding easterly along Grove Way to Mission Blvd, and proceeding westerly along Mission Blvd to Grove Way, and proceeding northerly along Grove Way to the Cherryland/Hayward census designated place/city line, and proceeding westerly along the Cherryland/Hayward census designated place/city line to the Cherryland/Castro Valley census designated place line, and proceeding westerly along the Cherryland/Castro Valley census designated place line to the Ashland/Castro Valley census designated place line, and proceeding northerly along the Ashland/Castro Valley census designated place line to the San Leandro/Castro Valley city/census designated place line, and proceeding westerly along the San Leandro/Castro Valley city/census designated place line to I-580, and proceeding northerly along I-580 to the San Leandro/Oakland city line, and proceeding westerly along the San Leandro/Oakland city line to nonvisible boundary, and proceeding northerly along nonvisible boundary to I-580, and proceeding westerly along I-580 to the point of beginning.

All of that portion of Contra Costa County bounded and described as follows: 1. Beginning at the point of intersection of the Alameda/Contra Costa county line and Cam Tassajara, and proceeding northerly along the Alameda/Contra Costa county line to the San Ramon/Norris Canyon city/census designated place line, and proceeding easterly along the San Ramon/Norris Canyon city/census designated place line to the San Ramon city line, and proceeding easterly along the San Ramon city line to unnamed Local road, and proceeding northerly along unnamed

Local road to Derby Dr, and proceeding easterly along Derby Dr to Morgan Dr, and proceeding easterly along Morgan Dr to the San Ramon city line, and proceeding easterly along the San Ramon city line to Morgan Dr, and proceeding easterly along Morgan Dr to nonvisible boundary, and proceeding easterly along nonvisible boundary to I- 680, and proceeding northerly along I- 680 to Bollinger Cyn, and proceeding easterly along Bollinger Cyn to Bollinger Canyon Rd, and proceeding easterly along Bollinger Canyon Rd to Dougherty Rd, and proceeding northerly along Dougherty Rd to physical line, and proceeding northerly along physical line to Goldenrod Ln, and proceeding easterly along Goldenrod Ln to Reedland Cir, and proceeding easterly along Reedland Cir to Crow Canyon Rd, and proceeding northerly along Crow Canyon Rd to Sentry Ln, and proceeding easterly along Sentry Ln to Crow Canyon Rd, and proceeding southerly along Crow Canyon Rd to the Danville/San Ramon town/city line, and proceeding southerly along the Danville/San Ramon town/city line to the Camino Tassajara/San Ramon census designated place/city line, and proceeding easterly along the Camino Tassajara/San Ramon census designated place/city line to the San Ramon city line, and proceeding southerly along the San Ramon city line to Windemere Pkwy, and proceeding northerly along Windemere Pkwy to Cam Tassajara, and proceeding southerly along Cam Tassajara to the point of beginning. 2. As well as beginning at the point of intersection of shoreline and Lindemann Rd, and proceeding easterly along shoreline to nonvisible boundary, and proceeding easterly along nonvisible boundary to the San Joaquin/Contra Costa county line, and proceeding southerly along the San Joaquin/Contra Costa county line to the Alameda/Contra Costa county line, and proceeding westerly along the Alameda/Contra Costa county line to Lindemann Rd, and proceeding northerly along Lindemann Rd to the point of beginning. 3. As well as beginning at the point of intersection of shoreline and the Alameda/Contra Costa county line, and proceeding northerly along shoreline to Byron Hwy, and proceeding easterly along Byron Hwy to Byron-Bethany Rd, and proceeding easterly along Byron-Bethany Rd to the Alameda/Contra Costa county line, and proceeding westerly along the Alameda/Contra Costa county line to the point of beginning.

## District 6

All of that portion of Alameda County bounded and described as follows: Beginning at the point of intersection of San Mateo Brg and the San Mateo/Alameda county line, and proceeding easterly along San Mateo Brg to J Atthur Younger (Toll Road), and proceeding easterly along J Atthur Younger (Toll Road) to unnamed Ramp, and proceeding easterly along unnamed Ramp to Clawiter Rd, and proceeding southerly along Clawiter Rd to J Atthur Younger (Toll Road), and proceeding easterly along J Atthur Younger (Toll Road) to W Jackson St, and proceeding easterly along W Jackson St to Hesperian Blvd, and proceeding southerly along Hesperian Blvd to J Jackson St, and proceeding easterly along J Jackson St to Hesperian Blvd, and proceeding southerly along Hesperian Blvd to W Tennyson Rd, and proceeding easterly along W Tennyson Rd to Tennyson Rd, and proceeding easterly along Tennyson Rd to Mission Blvd, and proceeding northerly along Mission Blvd to Orchard Ave, and proceeding easterly along Orchard Ave to Mission Blvd, and proceeding northerly along Mission Blvd to Carlos Bee Blvd, and proceeding easterly along Carlos Bee Blvd to powerline, and proceeding northerly along powerline to Campus Dr, and proceeding westerly along Campus Dr to the Fairview/Hayward

census designated place/city line, and proceeding easterly along the Fairview/Hayward census designated place/city line to Campus Dr, and proceeding easterly along Campus Dr to Oakes Dr, and proceeding easterly along Oakes Dr to property line, and proceeding easterly along property line to the Fairview/Hayward census designated place/city line, and proceeding easterly along the Fairview/Hayward census designated place/city line to Fairview Ave, and proceeding northerly along Fairview Ave to nonvisible boundary, and proceeding southerly along nonvisible boundary to the Fairview census designated place line, and proceeding northerly along the Fairview census designated place line to Five Canyons Pkwy, and proceeding northerly along Five Canyons Pkwy to Oak Terrace Rd, and proceeding northerly along Oak Terrace Rd to the Castro Valley census designated place line, and proceeding easterly along the Castro Valley census designated place line to the Castro Valley/Hayward census designated place/city line, and proceeding northerly along the Castro Valley/Hayward census designated place/city line to the Hayward city line, and proceeding easterly along the Hayward city line to the Pleasanton/Hayward city line, and proceeding southerly along the Pleasanton/Hayward city line to the Hayward city line, and proceeding easterly along the Hayward city line to the Pleasanton/Hayward city line, and proceeding southerly along the Pleasanton/Hayward city line to the Pleasanton/Sunol city/census designated place line, and proceeding southerly along the Pleasanton/Sunol city/census designated place line to nonvisible boundary, and proceeding westerly along nonvisible boundary to the Pleasanton city line, and proceeding southerly along the Pleasanton city line to Foothill Rd, and proceeding southerly along Foothill Rd to the Pleasanton city line, and proceeding southerly along the Pleasanton city line to the Sunol census designated place line, and proceeding easterly along the Sunol census designated place line to I-680, and proceeding southerly along I-680 to Vallecitos Rd, and proceeding southerly along Vallecitos Rd to Paloma Rd, and proceeding easterly along Paloma Rd to I-680, and proceeding southerly along I-680 to Mission Rd, and proceeding northerly along Mission Rd to Sheridan Rd, and proceeding southerly along Sheridan Rd to I-680, and proceeding westerly along I-680 to the Sunol/Fremont census designated place/city line, and proceeding easterly along the Sunol/Fremont census designated place/city line to the Fremont city line, and proceeding southerly along the Fremont city line to the Santa Clara/Alameda county line, and proceeding southerly along the Santa Clara/Alameda county line to the San Mateo/Alameda county line, and proceeding westerly along the San Mateo/Alameda county line to the point of beginning.

## District 7

All of that portion of Alameda County bounded and described as follows: Beginning at the point of intersection of the Berkeley/Oakland city line and the San Francisco/Alameda county line, and proceeding easterly along the Berkeley/Oakland city line to the Berkeley/Emeryville city line, and proceeding easterly along the Berkeley/Emeryville city line to the Berkeley/Oakland city line, and proceeding easterly along the Berkeley/Oakland city line to 65th St, and proceeding easterly along 65th St to Idaho St, and proceeding southerly along Idaho St to Harmon St, and proceeding easterly along Harmon St to Boise St, and proceeding northerly along Boise St to 66th St, and proceeding easterly along 66th St to Baker St, and proceeding southerly along Baker St to Fairview St, and proceeding easterly along Fairview St to the Berkeley/Oakland city line, and proceeding northerly along the Berkeley/Oakland city line to Woolsey St, and proceeding



easterly along Woolsey St to College Ave, and proceeding northerly along College Ave to Ashby Ave, and proceeding easterly along Ashby Ave to Claremont Ave, and proceeding northerly along Claremont Ave to Ashby Ave, and proceeding easterly along Ashby Ave to Domingo Ave, and proceeding northerly along Domingo Ave to the Berkeley/Oakland city line, and proceeding northerly along the Berkeley/Oakland city line to the Contra Costa/Alameda county line, and proceeding easterly along the Contra Costa/Alameda county line to Pinehurst Rd, and proceeding southerly along Pinehurst Rd to Redwood Rd, and proceeding easterly along Redwood Rd to Grass Valley Rd, and proceeding westerly along Grass Valley Rd to stream/river, and proceeding westerly along stream/river to Grass Valley Crk, and proceeding westerly along Grass Valley Crk to the Oakland city line, and proceeding southerly along the Oakland city line to nonvisible boundary, and proceeding westerly along nonvisible boundary to Keller Ave, and proceeding westerly along Keller Ave to I- 580, and proceeding westerly along I- 580 to nonvisible boundary, and proceeding westerly along nonvisible boundary to I- 580, and proceeding westerly along I- 580 to Edwards Ave, and proceeding southerly along Edwards Ave to Sunkist Dr, and proceeding westerly along Sunkist Dr to Hillmont Dr, and proceeding southerly along Hillmont Dr to 73rd Ave, and proceeding southerly along 73rd Ave to Macarthur Blvd, and proceeding westerly along Macarthur Blvd to Seminary Ave, and proceeding westerly along Seminary Ave to unnamed Local road, and proceeding westerly along unnamed Local road to Macarthur Blvd, and proceeding westerly along Macarthur Blvd to unnamed Ramp, and proceeding northerly along unnamed Ramp to Camden St, and proceeding northerly along Camden St to Birdsall Ave, and proceeding northerly along Birdsall Ave to Redding St, and proceeding westerly along Redding St to High St, and proceeding easterly along High St to I- 580, and proceeding westerly along I- 580 to Sheffield Ave, and proceeding southerly along Sheffield Ave to I- 580, and proceeding westerly along I- 580 to Ardley Ave, and proceeding southerly along Ardley Ave to E 31st St, and proceeding westerly along E 31st St to 23rd, and proceeding southerly along 23rd to E 30th St, and proceeding easterly along E 30th St to 23rd Ave, and proceeding southerly along 23rd Ave to E 27th St, and proceeding westerly along E 27th St to 23rd, and proceeding southerly along 23rd to 22nd Ave, and proceeding easterly along 22nd Ave to 23rd Ave, and proceeding southerly along 23rd Ave to E 22nd St, and proceeding westerly along E 22nd St to 19th, and proceeding southerly along 19th to 19th Ave, and proceeding southerly along 19th Ave to E 12th St, and proceeding easterly along E 12th St to 23rd Ave Ovp, and proceeding southerly along 23rd Ave Ovp to 23rd Ave, and proceeding southerly along 23rd Ave to unnamed Ramp, and proceeding southerly along unnamed Ramp to nonvisible boundary, and proceeding westerly along nonvisible boundary to 23rd Ave, and proceeding southerly along 23rd Ave to 23rd, and proceeding southerly along 23rd to 23rd Ave, and proceeding southerly along 23rd Ave to 23rd, and proceeding southerly along 23rd to the Oakland/Alameda city line, and proceeding easterly along the Oakland/Alameda city line to nonvisible boundary, and proceeding southerly along nonvisible boundary to the Oakland/Alameda city line, and proceeding westerly along the Oakland/Alameda city line to the San Mateo/Alameda county line, and proceeding northerly along the San Mateo/Alameda county line to the San Francisco/Alameda county line, and proceeding northerly along the San Francisco/Alameda county line to the point of beginning.

All of that portion of San Francisco County bounded and described as follows: Beginning at the point of intersection of the Marin/San Francisco county line and nonvisible boundary, and



proceeding easterly along the Marin/San Francisco county line to the Contra Costa/San Francisco county line, and proceeding southerly along the Contra Costa/San Francisco county line to the Alameda/San Francisco county line, and proceeding southerly along the Alameda/San Francisco county line to the San Mateo/San Francisco county line, and proceeding westerly along the San Mateo/San Francisco county line to Bay Shore Blvd, and proceeding northerly along Bay Shore Blvd to Arleta Ave, and proceeding northerly along Arleta Ave to San Bruno Ave, and proceeding easterly along San Bruno Ave to Wabash Ter, and proceeding easterly along Wabash Ter to Beeman Ln, and proceeding northerly along Beeman Ln to San Bruno Ave, and proceeding easterly along San Bruno Ave to nonvisible boundary, and proceeding northerly along nonvisible boundary to Access Rd 3, and proceeding northerly along Access Rd 3 to James Lick Fwy, and proceeding northerly along James Lick Fwy to Silver Ave, and proceeding easterly along Silver Ave to Bay Shore Blvd, and proceeding northerly along Bay Shore Blvd to unnamed Ramp, and proceeding northerly along unnamed Ramp to Bay Shore Blvd, and proceeding northerly along Bay Shore Blvd to James Lick Fwy, and proceeding northerly along James Lick Fwy to 25th St, and proceeding easterly along 25th St to nonvisible boundary, and proceeding easterly along nonvisible boundary to the point of beginning.

## District 8

All of that portion of San Francisco County bounded and described as follows: Beginning at the point of intersection of the Marin/San Francisco county line and the San Francisco county line, and proceeding easterly along the Marin/San Francisco county line to nonvisible boundary, and proceeding southerly along nonvisible boundary to Mission St, and proceeding westerly along Mission St to 1st St, and proceeding northerly along 1st St to Market St, and proceeding southerly along Market St to Ofarrell St, and proceeding westerly along Ofarrell St to Van Ness Ave, and proceeding northerly along Van Ness Ave to Clay St, and proceeding westerly along Clay St to Gough St, and proceeding southerly along Gough St to Sacramento St, and proceeding westerly along Sacramento St to Laguna St, and proceeding northerly along Laguna St to Clay St, and proceeding westerly along Clay St to Buchanan St, and proceeding southerly along Buchanan St to Sacramento St, and proceeding westerly along Sacramento St to Webster St, and proceeding northerly along Webster St to Clay St, and proceeding westerly along Clay St to Divisadero St, and proceeding southerly along Divisadero St to Sutter St, and proceeding easterly along Sutter St to Divisadero St, and proceeding southerly along Divisadero St to Post St, and proceeding westerly along Post St to Divisadero St, and proceeding southerly along Divisadero St to Ofarrell St, and proceeding easterly along Ofarrell St to Divisadero St, and proceeding southerly along Divisadero St to Fulton St, and proceeding westerly along Fulton St to Stanyan St, and proceeding southerly along Stanyan St to John F Kennedy Dr, and proceeding westerly along John F Kennedy Dr to Kezar Dr, and proceeding southerly along Kezar Dr to Lincoln Way, and proceeding westerly along Lincoln Way to 7th Ave, and proceeding southerly along 7th Ave to Laguna Honda Blvd, and proceeding southerly along Laguna Honda Blvd to nonvisible boundary, and proceeding westerly along nonvisible boundary to Laguna Honda Blvd, and proceeding southerly along Laguna Honda Blvd to Clarendon Ave, and proceeding easterly along Clarendon Ave to Laguna Honda Blvd, and proceeding southerly along Laguna Honda Blvd to Woodside Ave, and proceeding easterly along Woodside Ave to O'Shaughnessy

Blvd, and proceeding easterly along O'Shaughnessy Blvd to Oshaughnessy Blvd, and proceeding easterly along Oshaughnessy Blvd to Bosworth St, and proceeding easterly along Bosworth St to nonvisible boundary, and proceeding southerly along nonvisible boundary to Bosworth St, and proceeding easterly along Bosworth St to I- 280, and proceeding easterly along I- 280 to Mission St, and proceeding southerly along Mission St to the San Mateo/San Francisco county line, and proceeding westerly along the San Mateo/San Francisco county line to the San Francisco county line, and proceeding northerly along the San Francisco county line to the point of beginning.

## District 9

All of that portion of San Francisco County bounded and described as follows: Beginning at the point of intersection of Lincoln Way and 7th Ave, and proceeding easterly along Lincoln Way to Kezar Dr, and proceeding easterly along Kezar Dr to John F Kennedy Dr, and proceeding easterly along John F Kennedy Dr to Stanyan St, and proceeding northerly along Stanyan St to Fulton St, and proceeding easterly along Fulton St to Divisadero St, and proceeding northerly along Divisadero St to Ofarrell St, and proceeding westerly along Ofarrell St to Divisadero St, and proceeding northerly along Divisadero St to Post St, and proceeding easterly along Post St to Divisadero St, and proceeding northerly along Divisadero St to Sutter St, and proceeding westerly along Sutter St to Divisadero St, and proceeding northerly along Divisadero St to Clay St, and proceeding easterly along Clay St to Webster St, and proceeding southerly along Webster St to Sacramento St, and proceeding easterly along Sacramento St to Buchanan St, and proceeding northerly along Buchanan St to Clay St, and proceeding easterly along Clay St to Laguna St, and proceeding southerly along Laguna St to Sacramento St, and proceeding easterly along Sacramento St to Gough St, and proceeding northerly along Gough St to Clay St, and proceeding easterly along Clay St to Van Ness Ave, and proceeding southerly along Van Ness Ave to Ofarrell St, and proceeding easterly along Ofarrell St to Market St, and proceeding easterly along Market St to 1st St, and proceeding southerly along 1st St to Mission St, and proceeding easterly along Mission St to nonvisible boundary, and proceeding easterly along nonvisible boundary to 25th St, and proceeding westerly along 25th St to James Lick Fwy, and proceeding southerly along James Lick Fwy to Bay Shore Blvd, and proceeding southerly along Bay Shore Blvd to unnamed Ramp, and proceeding southerly along unnamed Ramp to Bay Shore Blvd, and proceeding southerly along Bay Shore Blvd to Silver Ave, and proceeding westerly along Silver Ave to James Lick Fwy, and proceeding southerly along James Lick Fwy to Access Rd 3, and proceeding southerly along Access Rd 3 to nonvisible boundary, and proceeding southerly along nonvisible boundary to San Bruno Ave, and proceeding southerly along San Bruno Ave to Beeman Ln, and proceeding southerly along Beeman Ln to Wabash Ter, and proceeding westerly along Wabash Ter to San Bruno Ave, and proceeding southerly along San Bruno Ave to Arleta Ave, and proceeding southerly along Arleta Ave to Bay Shore Blvd, and proceeding westerly along Bay Shore Blvd to the San Mateo/San Francisco county line, and proceeding westerly along the San Mateo/San Francisco county line to Mission St, and proceeding easterly along Mission St to I- 280, and proceeding westerly along I- 280 to Bosworth St, and proceeding northerly along Bosworth St to nonvisible boundary, and proceeding northerly along nonvisible boundary to Bosworth St, and proceeding westerly along Bosworth St to Oshaughnessy Blvd, and proceeding westerly along Oshaughnessy Blvd to

O'Shaughnessy Blvd, and proceeding northerly along O'Shaughnessy Blvd to Woodside Ave, and proceeding westerly along Woodside Ave to Laguna Honda Blvd, and proceeding northerly along Laguna Honda Blvd to Clarendon Ave, and proceeding westerly along Clarendon Ave to Laguna Honda Blvd, and proceeding northerly along Laguna Honda Blvd to nonvisible boundary, and proceeding easterly along nonvisible boundary to Laguna Honda Blvd, and proceeding northerly along Laguna Honda Blvd to 7th Ave, and proceeding northerly along 7th Ave to the point of beginning.

## EXHIBIT 1: RESOLUTION NO. 5501

The following pages include the full version of BART Board of Directors Resolution No. 5501.

[Remainder of page intentionally left blank.]

Resolution No. 5501

The foregoing Resolution was made at the motion of

Director Li and seconded by

Director Raburn and adopted by

the following votes of the Board:

AYES: 8 - Directors Allen, Dufty, Foley, Li, McPartland,  
Raburn, Saltzman, and Simon

NOES: 0

ABSENT: 1 - Ames

ABSTAIN: 0

I do certify that the foregoing Resolution was duly and  
regularly introduced, passed, and adopted by the Board of  
Directors of the San Francisco Bay Area Rapid Transit District  
at a regular meeting held on the 13<sup>th</sup> day of January 2022.



Rebecca Saltzman, President



Jacqueline R. Edwards  
District Secretary



**BEFORE THE BOARD OF DIRECTORS OF THE  
SAN FRANCISCO BAY AREA RAPID TRANSIT DISTRICT**

In the Matter of the approval of  
Approval of a Resolution of Support  
for A Fair and Equitable BART  
Redistricting Strategy as  
Required by the District Act

Resolution No. 5501

**Approving a Fair and Equitable BART Redistricting Strategy as Required by the  
District Act**

**WHEREAS**, The U.S. Constitution requires that every resident receive as close to equal representation as possible in government; and

**WHEREAS**, U.S. Constitution mandates that an apportionment of representatives among the states must be carried out every 10 years; and

**WHEREAS**, In accordance with the U.S. Constitution, the last census occurred in 2020; and

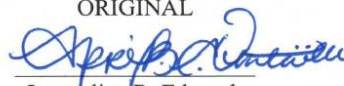
**WHEREAS**, California Public Utilities Code Section 28750 requires that "[f]ollowing each federal decennial census and using the census as a basis, the [BART] board shall, by resolution, adjust the boundaries of the election districts so that the districts shall be as nearly equal in population as practicable;" and

**WHEREAS**, redistricting determines which neighborhoods and communities are grouped together into a Board of Directors election district for purposes of electing a Board member; and

**WHEREAS**, as a result of the 2020 census, the San Francisco Bay Area Rapid Transit District (BART)'s Board of Directors election districts must be redrawn so that each district is substantially equal in population through a process called redistricting; and

**WHEREAS**, Senate Bill 594 (2021) has given the Board of Directors until April 17, 2022, to adjust the boundaries of the election districts; and

Adopted: January 13, 2022

ORIGINAL  
  
Jacqueline R. Edwards  
District Secretary

**WHEREAS**, the BART Board of Directors has appointed a subcommittee of three Directors (the Redistricting Committee) to carry-out its redistricting process in accordance with the requirements of the San Francisco Bay Area Rapid Transit District Act and based upon the population data resulting from the 2020 United States Census; and

**WHEREAS**, BART issued Request for Proposal No. 6M1126 for consulting services to assist in drawing the boundaries of BART's nine election districts; and

**WHEREAS**, GEOinovo Solutions, Inc. (Consultant) submitted a responsive proposal and was found to provide the best value to BART; and

**WHEREAS**, Consultant is helping BART to comply with U.S. Constitution, California Constitution, and the Federal Voting Rights Act; and

**WHEREAS**, For the 2021 redistricting process, there have been significant changes in federal and state law, specifically in California the Fair And Inclusive Redistricting for Municipalities And Political Subdivisions (FAIR MAPS) Act, which sets forth the requirements for cities and counties performing redistricting; and

**WHEREAS**, BART is aware of the requirements of the FAIR MAPS Act, however, as a special district, is not governed by nor subject to it; and

**WHEREAS**, BART wants to ensure a fair and equitable redistricting process and is therefore following principles similar to the FAIR MAPS Act in executing its redistricting process; and

**WHEREAS**, the BART Board President requests the Board approve BART's redistricting strategy; and

**NOW, THEREFORE, BE IT RESOLVED** by the Board of Directors of the San Francisco Bay Area Rapid Transit District that:

The BART redistricting project progression will (1) include demographic and statistical analysis of the population in the District, (2) map the geography of the area, (3) include community meetings/hearings/public input, (4) create three map iterations of the potential district boundaries, (5) present potential maps to BART, and (6) adoption of the final map; and be it further

**RESOLVED** that BART's redistricting strategy greatly aligns with the requirements set forth in the FAIR MAPS Act, and be it further

**RESOLVED** that district boundaries shall be substantially equal in population as required by the U.S. Constitution; and be it further

**RESOLVED** that district boundaries shall comply with the U.S. Constitution, California Constitution and Federal laws; and be it further

**RESOLVED** that to the extent possible, districts shall be geographically contiguous; and be it further

**RESOLVED** that to the extent practicable, districts shall respect the geographic integrity of any local community of interest in a manner that minimizes division; and be it further

**RESOLVED** that district boundaries shall be easily identifiable and understandable by residents. To the extent practicable, districts shall be bounded by natural and artificial barriers, by streets, or by boundaries of BART; and be it further

**RESOLVED** that to the extent practicable, and where it does not conflict with the preceding criteria, districts shall be drawn to encourage geographic compactness in such a manner that nearby areas of the population are not bypassed in favor of a more distant population; and be it further

**RESOLVED** the Redistricting Committee shall host a total of six virtual public outreach meetings as follows

- Meeting 1: Wednesday, November 10, 2021, 1pm
- Meeting 2: Wednesday, December 15, 2021, 6pm
- Meeting 3: Saturday, January 8, 2022, Noon
- Meeting 4: Saturday, January 15, 2022, 9am
- Meeting 5: Saturday, January 22, 2022, 6pm
- Meeting 6: Wednesday, February 2, 2022, 6pm; and be it further

**RESOLVED** that the Redistricting Committee will utilize interactive mapping tools, accessible via the BART website, to enable public input; and be it further

**RESOLVED** that the Board of Directors shall not adopt boundaries for the purpose of favoring or discriminating against a political party; and be it further

**RESOLVED** that the Board of Directors shall not adopt boundaries based on where incumbents live, and be it further

**RESOLVED** that BART is providing a community input map to allow residents to identify and provide supplemental information regarding their community of interest; and be it further

**RESOLVED** that Consultant will provide training to the community on how to use the technology to view a map of the entire BART area, select census blocks and see population data for the districts being drawn; and be it further

**RESOLVED** that after the initial analysis, community engagement, and draft boundaries, final District maps will be presented to the BART Board of Directors; and be it further resolved

**RESOLVED** that the BART Board of Directors approves the redistricting strategy and finds that it is fair and equitable.

## EXHIBIT 2: RESOLUTION NO. 5509

The following pages include the full version of BART Board of Directors Resolution No. 5509.

[Remainder of page intentionally left blank.]



Resolution No. 5509

The foregoing Resolution was made at the motion of

Director Li and seconded by

Director Dufty and adopted by

the following votes of the Board:

AYES: 7 - Directors Allen, Ames, Dufty, Foley, Li, McPartland, and Saltzman


NOES: 1 - Director Raburn

ABSENT: 1 - Director Simon

ABSTAIN: 0

I do certify that the foregoing Resolution was duly and regularly introduced, passed, and adopted by the Board of Directors of the San Francisco Bay Area Rapid Transit District at a regular meeting held on the 10<sup>th</sup> day of March 2022.

  
\_\_\_\_\_  
Rebecca Saltzman, President

  
\_\_\_\_\_  
April B. A. Quintanilla  
Assistant District Secretary

**BEFORE THE BOARD OF DIRECTORS OF THE  
SAN FRANCISCO BAY AREA RAPID TRANSIT DISTRICT**

**Resolution of the Board of Directors of the  
San Francisco Bay Area Rapid Transit  
District adjusting the boundaries of nine  
Election districts within the territory of the  
District as provided by Article 2.4 of Chapter  
3 of Part 2 of Division 10 of the Public Utilities  
Code of the State of California**

Resolution No.: 5509

WHEREAS, Section 28745 of the Public Utilities Code of the State of California provides that on and after November 29, 1974, the governing body of the San Francisco Bay Area Rapid Transit District (hereafter "District") shall be a board of directors (hereafter "Board") consisting of nine members elected by election districts, and

WHEREAS, Section 28750 of the Public Utilities Code of the State of California provides:

"Following each federal decennial census and using the census as a basis, the board shall, by resolution, adjust the boundaries of the election districts so that the districts shall be as nearly equal in population as practicable considering the factors specified in Section 28745.6"; and,


WHEREAS, Section 28745.6 of the Public Utilities Code of the State of California provides:

"In establishing the election districts, consideration shall be given to the following factors:

- (a) Community of interest of the population within an election district.
- (b) Cohesiveness, contiguity, integrity, and compactness of territory.
- (c) Topography
- (d) Geography

Boundaries of the election districts need not conform to the boundaries of counties, cities, cities and counties, or districts, or of wards or election districts established for the nomination or election of any officers thereof, or of Assembly, Senate or congressional districts"; and

Adopted: March 10, 2022

ORIGINAL  
  
April B. A. Quintanilla  
Assistant District Secretary  
Page 1 of 2

WHEREAS, Section 28750.4 of the Public Utilities Code of the State of California provides:

“The resolution reestablishing election districts shall describe the new boundaries of the election districts by reference to a map or maps on file with the secretary of the district. Immediately upon adoption of the resolution, the secretary shall file a certified copy of the resolution and the map or maps describing all election districts with the Secretary of State and with the county clerk of each county with territory within the boundaries of the district”; and

WHEREAS, The Board finds that an ideal election district based on the 2020 census figures would have a population of 414,059;

WHEREAS, the Board finds that the factors listed under Section 28745.6 have been considered in the adjustment of the election district boundaries.

NOW, THEREFORE, BE IT RESOLVED by the Board of Directors of the San Francisco Bay Area Rapid Transit District:

1. That the boundaries of the nine election districts are adjusted as described and identified in the Redistricting Plan attached hereto, identified as E2, and by this reference made a part hereof;
2. That the Secretary of the District is directed to maintain on file this resolution and the attached Redistricting Plan;
3. That the Secretary of the District is hereby authorized and directed to certify to the due adoption of this resolution and the attached Redistricting Plan describing all nine election districts, and to file a copy hereof, so certified, with the Secretary of the State of California, and with the county clerk of each county with territory within the boundaries of the District; and
4. That Resolution No. 5184 is suspended by this resolution.

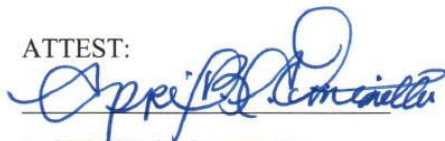
PASSED AND ADOPTED this 10 day of March, 2022 by the following vote:

AYES: 7  
NOES: 1  
ABSENT: 1



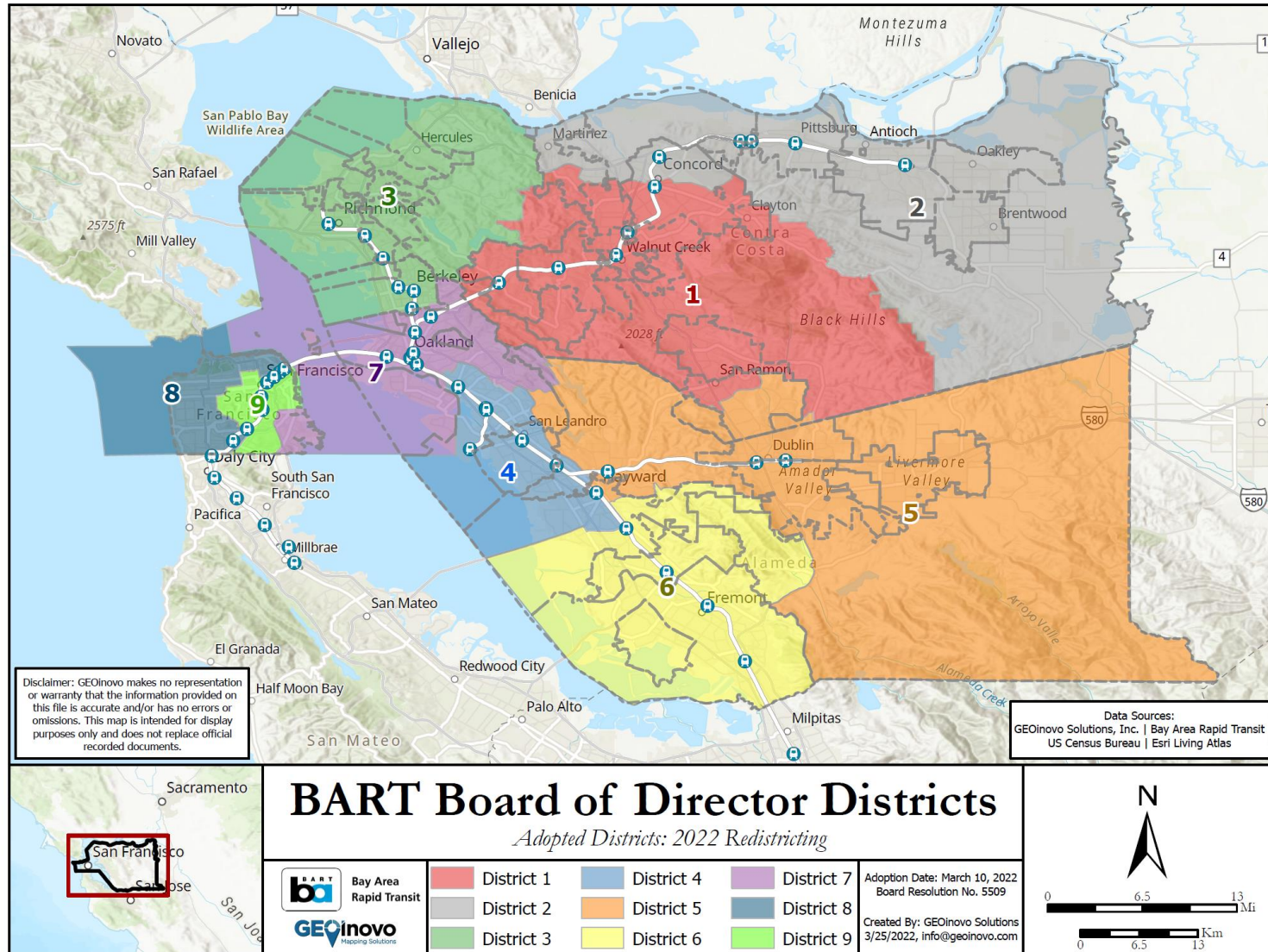
PRESIDENT

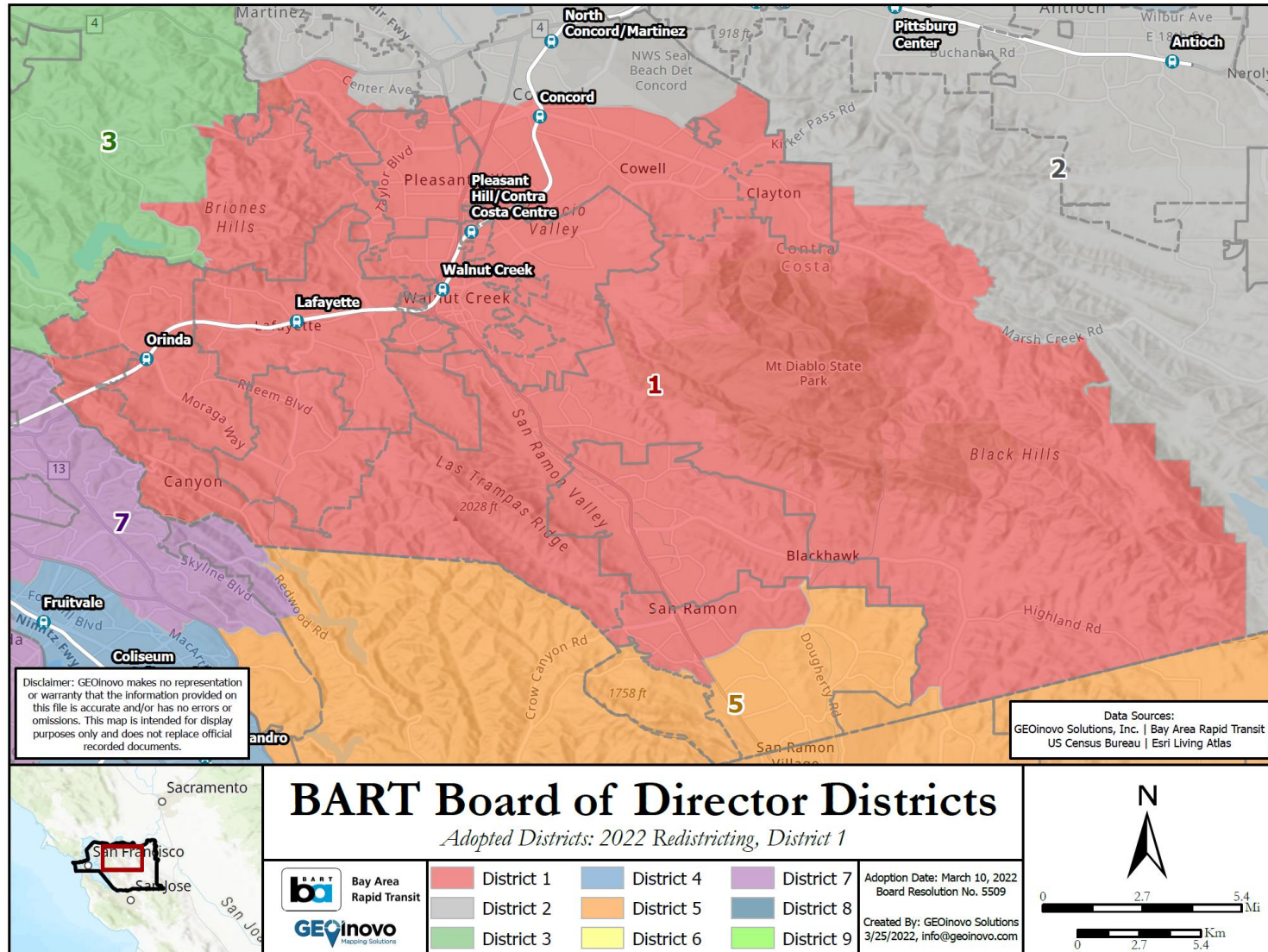
ATTEST:



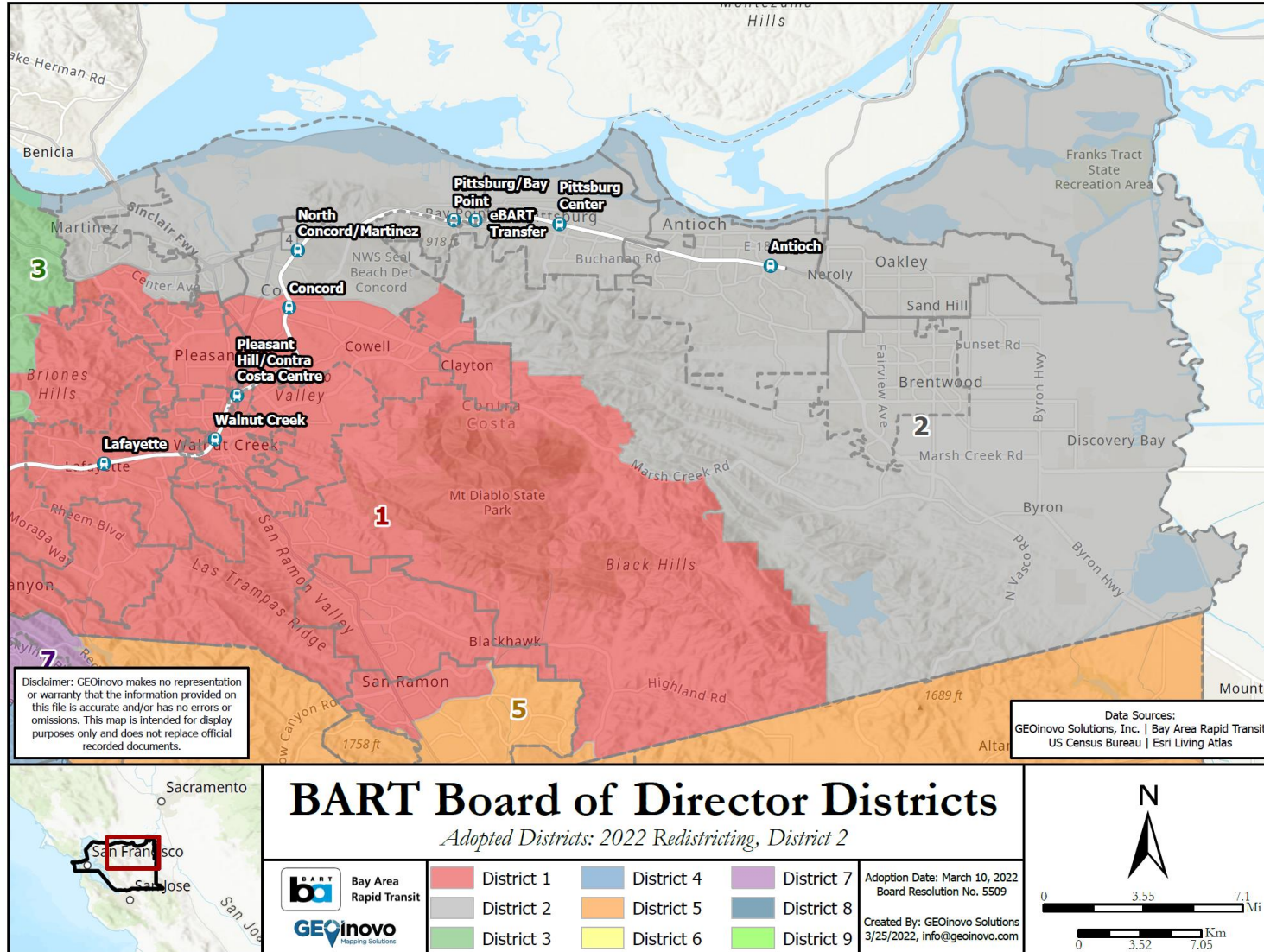
DISTRICT SECRETARY

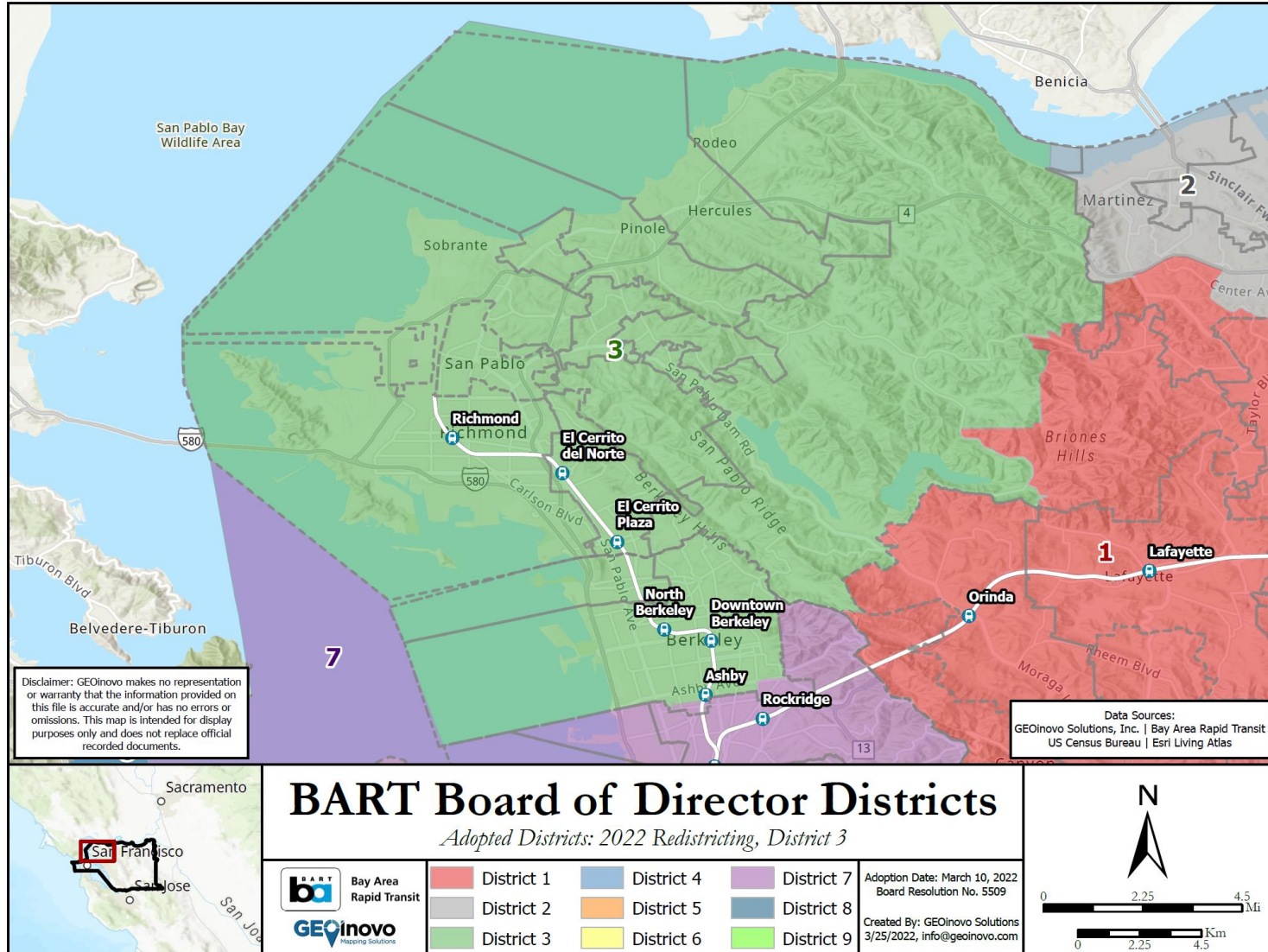




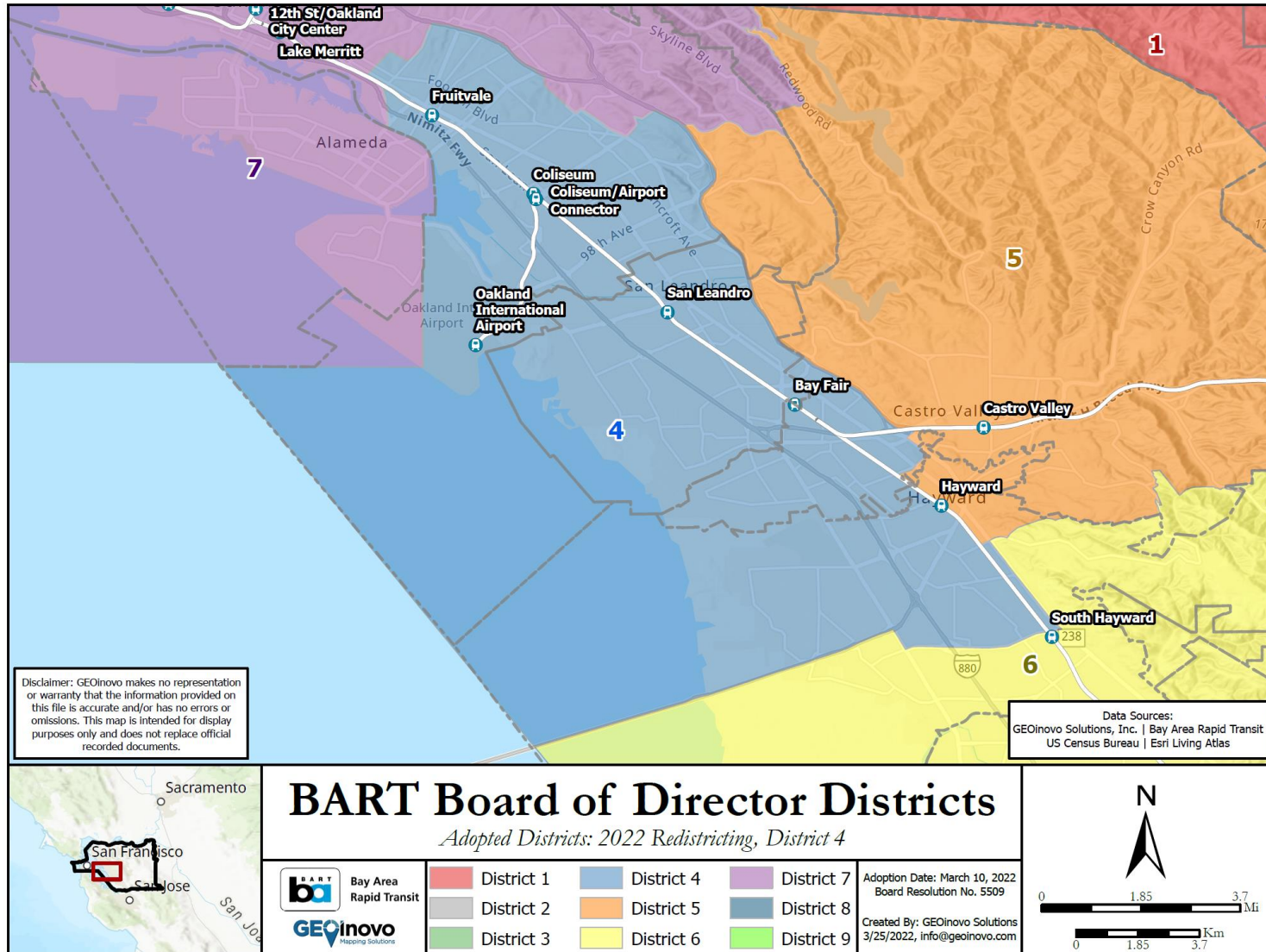


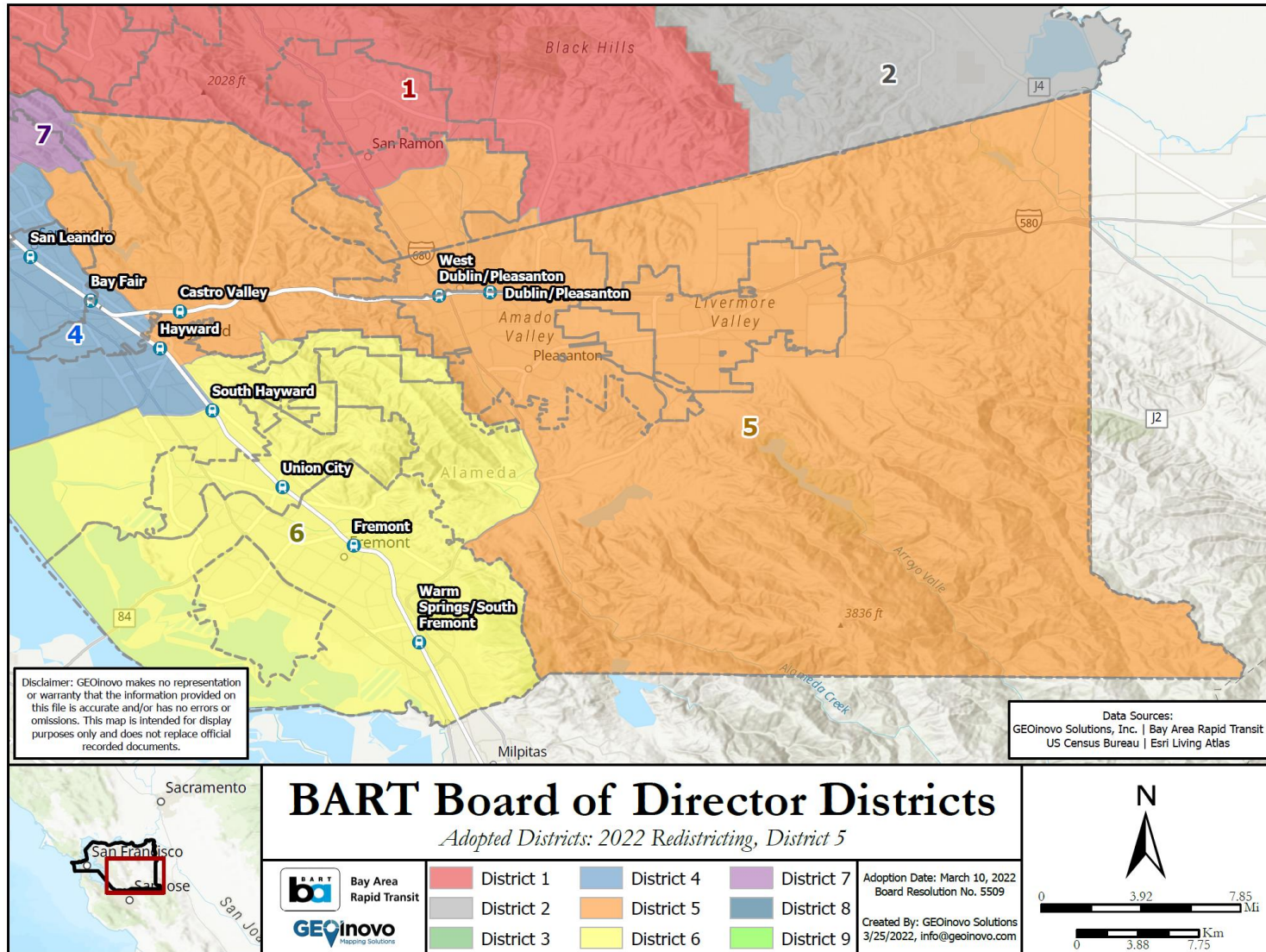




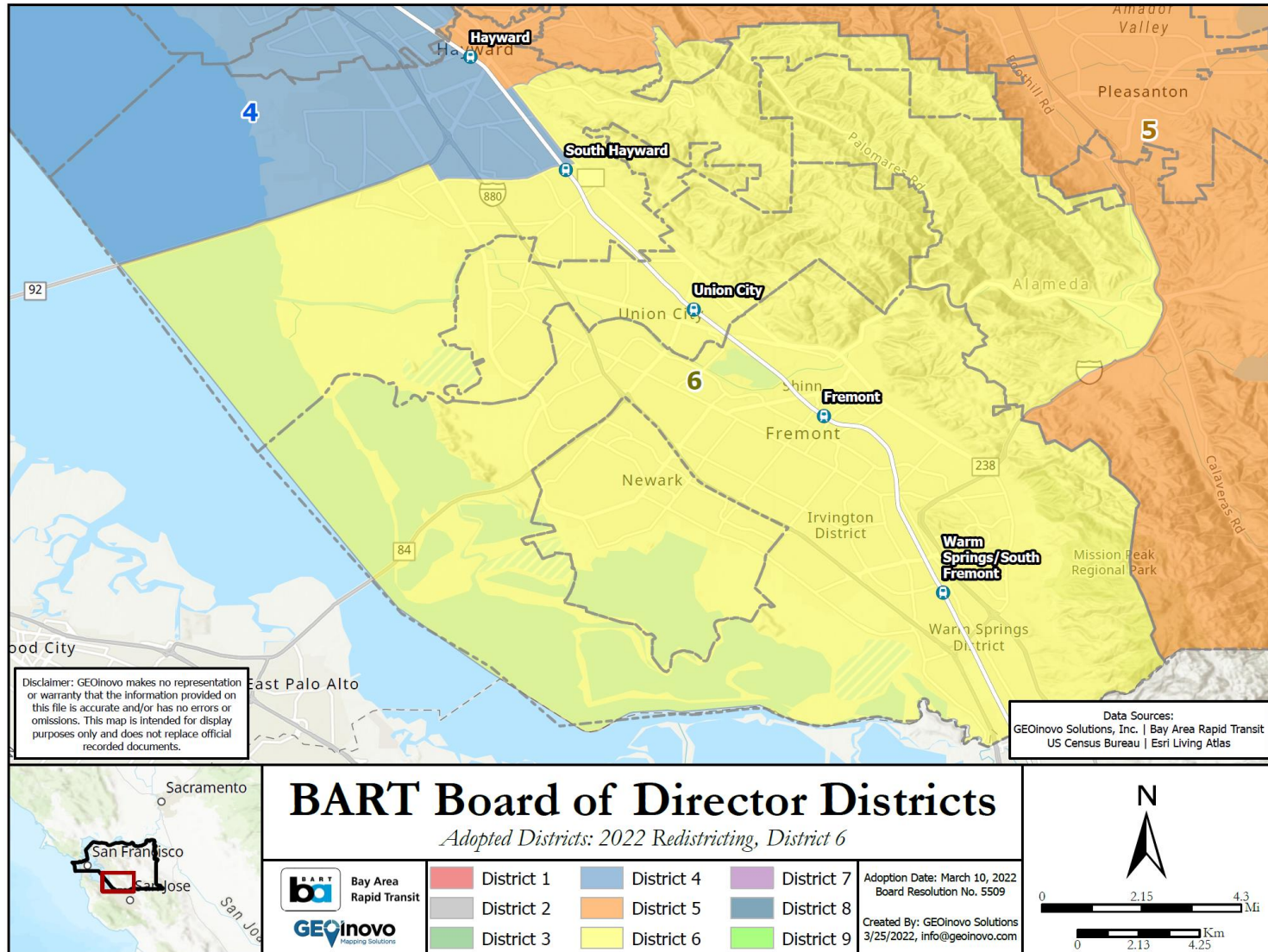




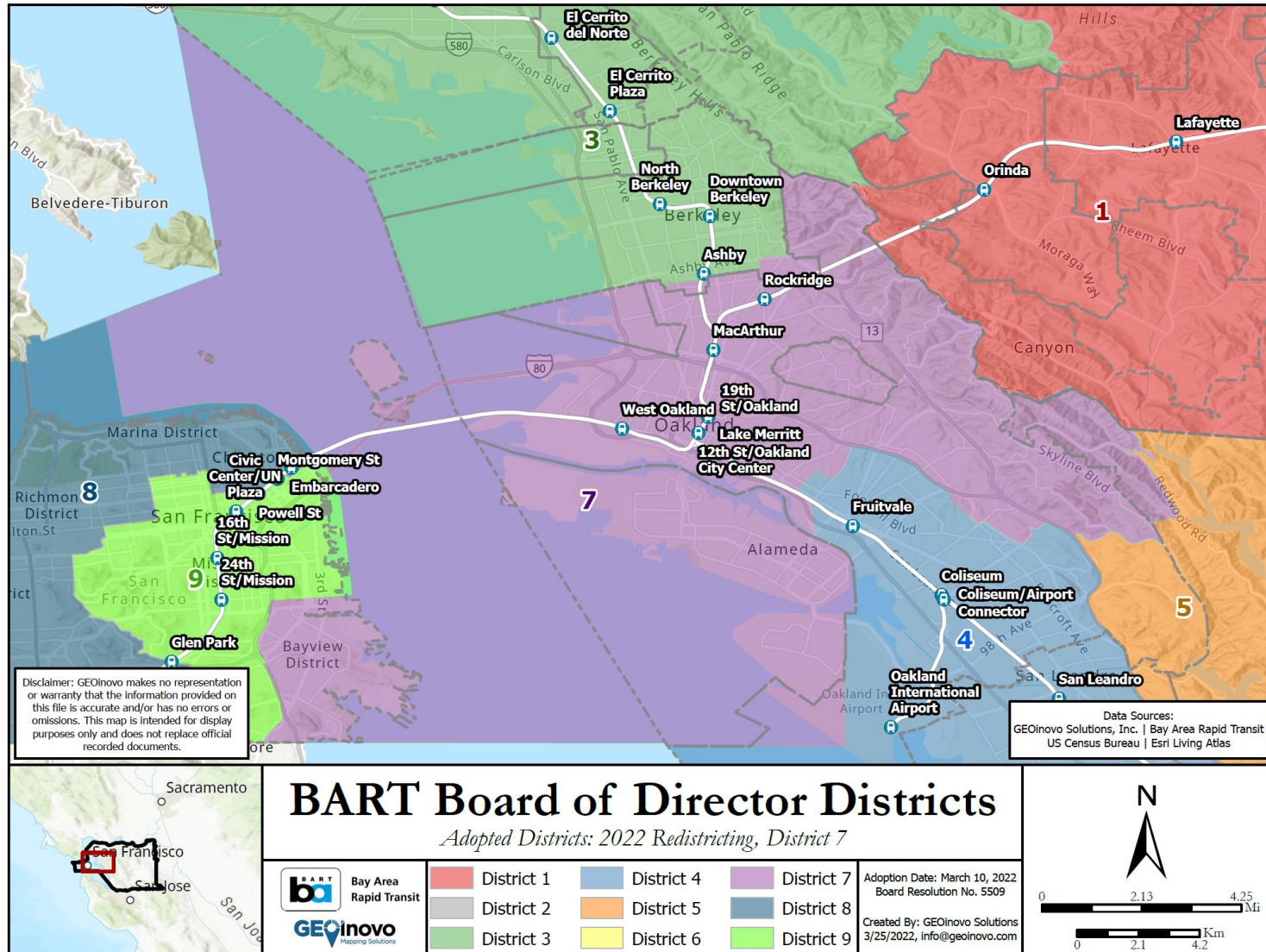


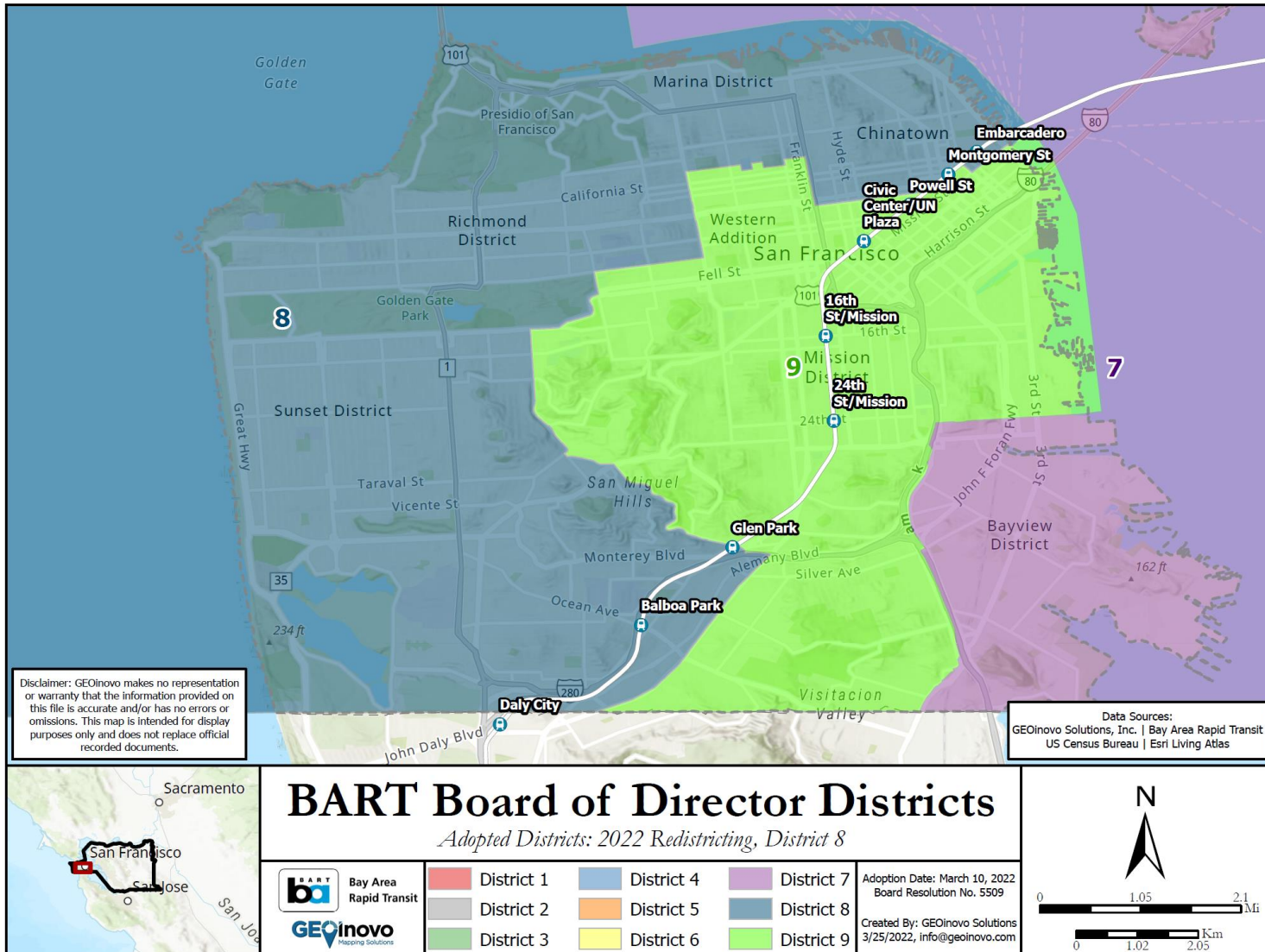




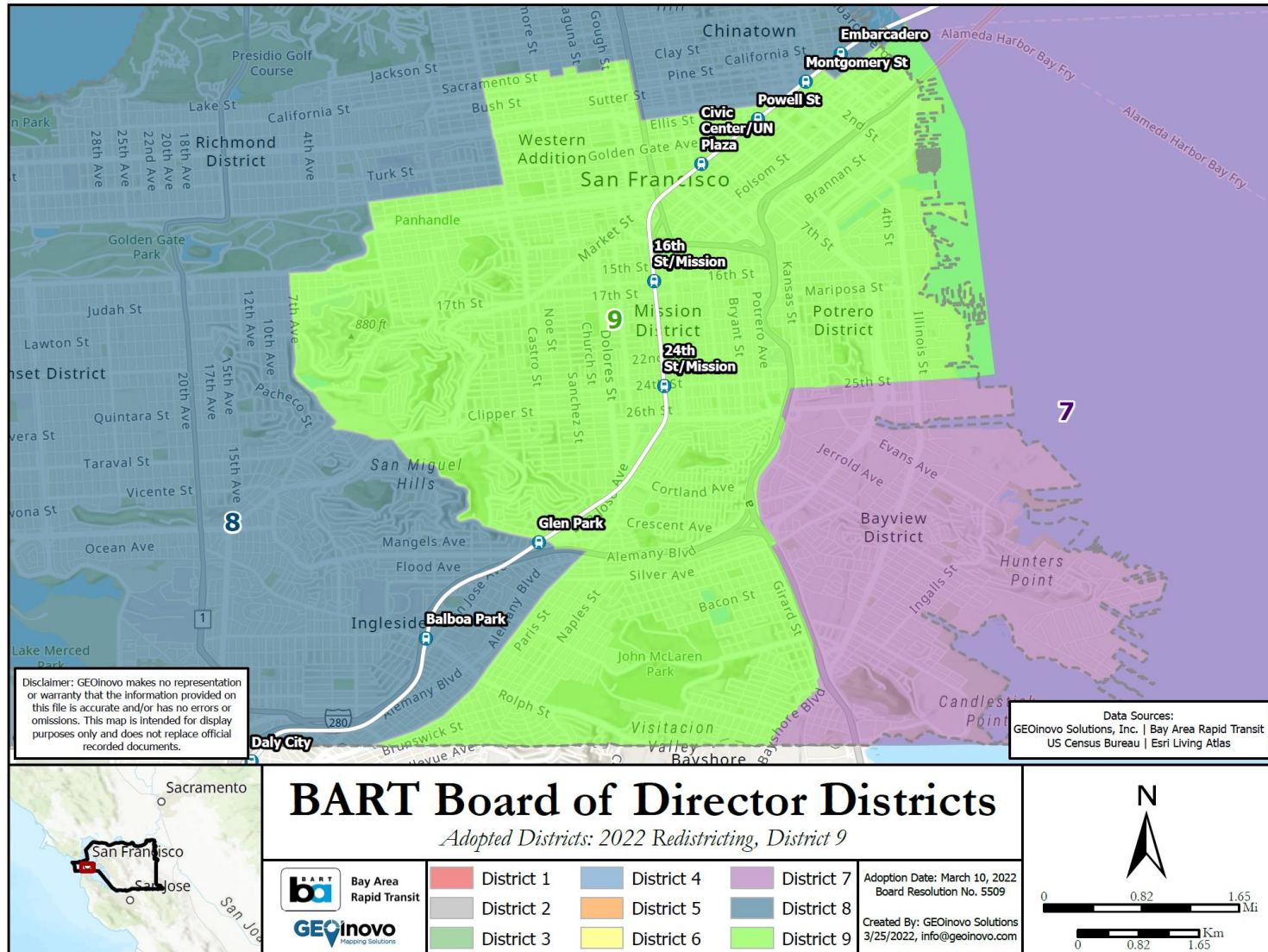












## EXHIBIT 3: 2020 CENSUS POPULATION BY 2022 DISTRICT AND CITY

The table below provides a breakdown of 2020 census population by 2022 district and city.

### Column Descriptions

- **District City Pop:** This is the population of a city or unincorporated area within a BART district.
- **District City Pop %:** This is the percentage of the city or unincorporated area’s population within a BART district.
- **Total City Pop:** This is the total population of a city or unincorporated area.

District	City Name	District City Pop	District City Pop %	Total City Pop
1	Martinez City	9,382	25.1%	37,349
1	San Ramon City	23,655	27.9%	84,682
1	Concord City	99,570	79.3%	125,617
1	Clayton City	11,085	100.0%	11,085
1	Danville town	43,618	100.0%	43,618
1	Lafayette City	25,413	100.0%	25,413
1	Moraga town	16,880	100.0%	16,880
1	Orinda City	19,529	100.0%	19,529
1	Pleasant Hill	34,649	100.0%	34,649
1	Walnut Creek City	70,199	100.0%	70,199
1	Uninc. Contra Costa County	60,261	33.7%	178,865
2	Concord City	26,047	20.7%	125,617
2	Martinez City	27,967	74.9%	37,349
2	Antioch City	115,580	100.0%	115,580
2	Brentwood City	64,381	100.0%	64,381
2	Oakley City	43,443	100.0%	43,443
2	Pittsburg City	76,657	100.0%	76,657
2	Uninc. Contra Costa County	59,938	33.5%	178,865
3	Berkeley City	118,009	94.8%	124,433
3	Albany City	20,275	100.0%	20,275
3	El Cerrito City	26,000	100.0%	26,000
3	Hercules City	26,053	100.0%	26,053
3	Pinole City	19,057	100.0%	19,057
3	Richmond City	116,791	100.0%	116,791
3	San Pablo City	32,221	100.0%	32,221
3	Uninc. Contra Costa County	55,622	31.1%	178,865

4	Oakland City	177,074	40.1%	441,891
4	Hayward City	79,719	48.9%	163,172
4	San Leandro City	88,451	97.1%	91,103
4	Uninc. Alameda County	68,642	45.1%	152,253
5	Oakland City	6,587	1.5%	441,891
5	San Leandro City	2,652	2.9%	91,103
5	Hayward City	19,077	11.7%	163,172
5	San Ramon City	61,027	72.1%	84,682
5	Pleasanton City	79,787	99.9%	79,894
5	Dublin City	71,468	100.0%	71,468
5	Livermore City	88,006	100.0%	88,006
5	Uninc. Alameda County	82,466	54.2%	152,253
5	Uninc. Contra Costa County	3,044	1.7%	178,865
6	Pleasanton City	107	0.1%	107
6	Hayward City	64,376	39.5%	64,376
6	Fremont City	230,649	100.0%	230,649
6	Newark City	47,570	100.0%	47,570
6	Union City City	70,218	100.0%	70,218
6	Uninc. Alameda County	1,115	0.7%	152,253
7	Berkeley City	6,424	5.2%	124,433
7	San Francisco City/County	46,860	5.4%	874,993
7	Oakland City	258,230	58.4%	441,891
7	Alameda City	78,351	100.0%	78,351
7	Emeryville City	12,911	100.0%	12,911
7	Piedmont City	11,274	100.0%	11,274
7	Uninc. Alameda County	30	0.0%	152,253
8	San Francisco City/County	414,072	47.3%	874,993
9	San Francisco City/County	414,061	47.3%	874,993



Plan E2: 2020 Census Population By 2022 District and City

District	City/Place Name	District City/Place Pop	District City/Place %	Total City/Place Pop
1	Total	414,241		
1	Clayton City	11,085	100.0%	11,085
1	Concord City	99,570	79.3%	125,617
1	Danville town	43,618	100.0%	43,618
1	Lafayette City	25,413	100.0%	25,413
1	Martinez City	9,382	25.1%	37,349
1	Moraga town	16,880	100.0%	16,880
1	Orinda City	19,529	100.0%	19,529
1	Pleasant Hill	34,649	100.0%	34,649
1	San Ramon City	23,655	27.9%	84,682
1	Walnut Creek City	70,199	100.0%	70,199
1	Acalanes Ridge CDP	1,287	100.0%	1,287
1	Alamo CDP	15,325	100.0%	15,325
1	Alhambra Valley CDP	807	100.0%	807
1	Blackhawk CDP	9,648	100.0%	9,648
1	Camino Tassajara CDP	4,961	100.0%	4,961
1	Castle Hill CDP	1,273	100.0%	1,273
1	Contra Costa Centre CDP	6,813	100.0%	6,813
1	Diablo CDP	1,257	100.0%	1,257
1	North Gate CDP	669	100.0%	669
1	Reliez Valley CDP	3,354	100.0%	3,354
1	San Miguel CDP	3,596	100.0%	3,596
1	Saranap CDP	5,837	100.0%	5,837
1	Shell Ridge CDP	1,015	100.0%	1,015
1	Uninc-Contra Costa County	4,419	41.9%	10,540
2	Total	414,013		
2	Concord City	26,047	20.7%	125,617
2	Martinez City	27,967	74.9%	37,349
2	Antioch City	115,580	100.0%	115,580
2	Brentwood City	64,381	100.0%	64,381
2	Oakley City	43,443	100.0%	43,443
2	Pittsburg City	76,657	100.0%	76,657
2	Bay Point CDP	23,971	100.0%	23,971
2	Bethel Island CDP	2,139	100.0%	2,139
2	Byron CDP	1,142	100.0%	1,142
2	Clyde CDP	729	100.0%	729
2	Discovery Bay CDP	15,378	100.0%	15,378
2	Knightsen CDP	1,602	100.0%	1,602
2	Mountain View CDP	2,636	100.0%	2,636
2	Pacheco CDP	4,190	100.0%	4,190
2	Vine Hill CDP	4,329	100.0%	4,329
2	Uninc-Contra Costa County	3,822	36.3%	10,540
3	Total	414,028		

3 Berkeley City	118,009	94.8%	124,433
3 Albany City	20,275	100.0%	20,275
3 El Cerrito City	26,000	100.0%	26,000
3 Hercules City	26,053	100.0%	26,053
3 Pinole City	19,057	100.0%	19,057
3 Richmond City	116,791	100.0%	116,791
3 San Pablo City	32,221	100.0%	32,221
3 Bayview CDP	1,786	100.0%	1,786
3 Crockett CDP	3,251	100.0%	3,251
3 East Richmond Heights CDP	3,463	100.0%	3,463
3 El Sobrante CDP	15,547	100.0%	15,547
3 Kensington CDP	5,435	100.0%	5,435
3 Montalvin Manor CDP	3,113	100.0%	3,113
3 North Richmond CDP	4,192	100.0%	4,192
3 Port Costa CDP	190	100.0%	190
3 Rodeo CDP	9,678	100.0%	9,678
3 Rollingwood CDP	3,019	100.0%	3,019
3 Tara Hills CDP	5,378	100.0%	5,378
3 Uninc-Contra Costa County	570	5.4%	10,540
4 Total	413,886		
4 Oakland City	177,074	40.1%	441,891
4 Hayward City	79,719	48.9%	163,172
4 San Leandro City	88,451	97.1%	91,103
4 Ashland CDP	23,837	100.0%	23,837
4 Cherryland CDP	15,190	95.9%	15,843
4 San Lorenzo CDP	29,615	100.0%	29,615
5 Total	414,114		
5 Oakland City	6,587	1.5%	441,891
5 San Leandro City	2,652	2.9%	91,103
5 Hayward City	19,077	11.7%	163,172
5 San Ramon City	61,027	72.1%	84,682
5 Pleasanton City	79,787	99.9%	79,894
5 Dublin City	71,468	100.0%	71,468
5 Livermore City	88,006	100.0%	88,006
5 Castro Valley CDP	66,492	100.0%	66,492
5 Cherryland CDP	653	4.1%	15,843
5 Fairview CDP	11,114	97.9%	11,353
5 Sunol CDP	266	28.9%	922
5 Norris Canyon CDP	1,315	100.0%	1,315
5 Uninc-Alameda County	3,941	94.0%	4,191
5 Uninc-Contra Costa County	1,729	16.4%	10,540
6 Total	414,035		
6 Pleasanton City	107	0.1%	79,894
6 Hayward City	64,376	100.0%	64,376

6 Fremont City	230,649	100.0%	230,649
6 Newark City	47,570	100.0%	47,570
6 Union City	70,218	100.0%	70,218
6 Fairview CDP	239	2.1%	11,353
6 Sunol CDP	656	71.1%	922
6 Uninc-Alameda County	220	5.2%	4,191
<b>7 Total</b>	<b>414,080</b>		
7 Berkeley City	6,424	5.2%	124,433
7 San Francisco City/County	46,860	5.4%	874,993
7 Oakland City	258,230	58.4%	441,891
7 Alameda City	78,351	100.0%	78,351
7 Emeryville City	12,911	100.0%	12,911
7 Piedmont City	11,274	100.0%	11,274
7 Uninc-Alameda County	30	0.7%	4,191
<b>8 Total</b>	<b>414,072</b>		
8 San Francisco City/County	414,072	47.3%	874,993
<b>9 Total</b>	<b>414,061</b>		
9 San Francisco City/County	414,061	47.3%	874,993