

2022

BART Redistricting: Plan D



GEOinovo Solutions Inc.

BART Redistricting

2/28/2022

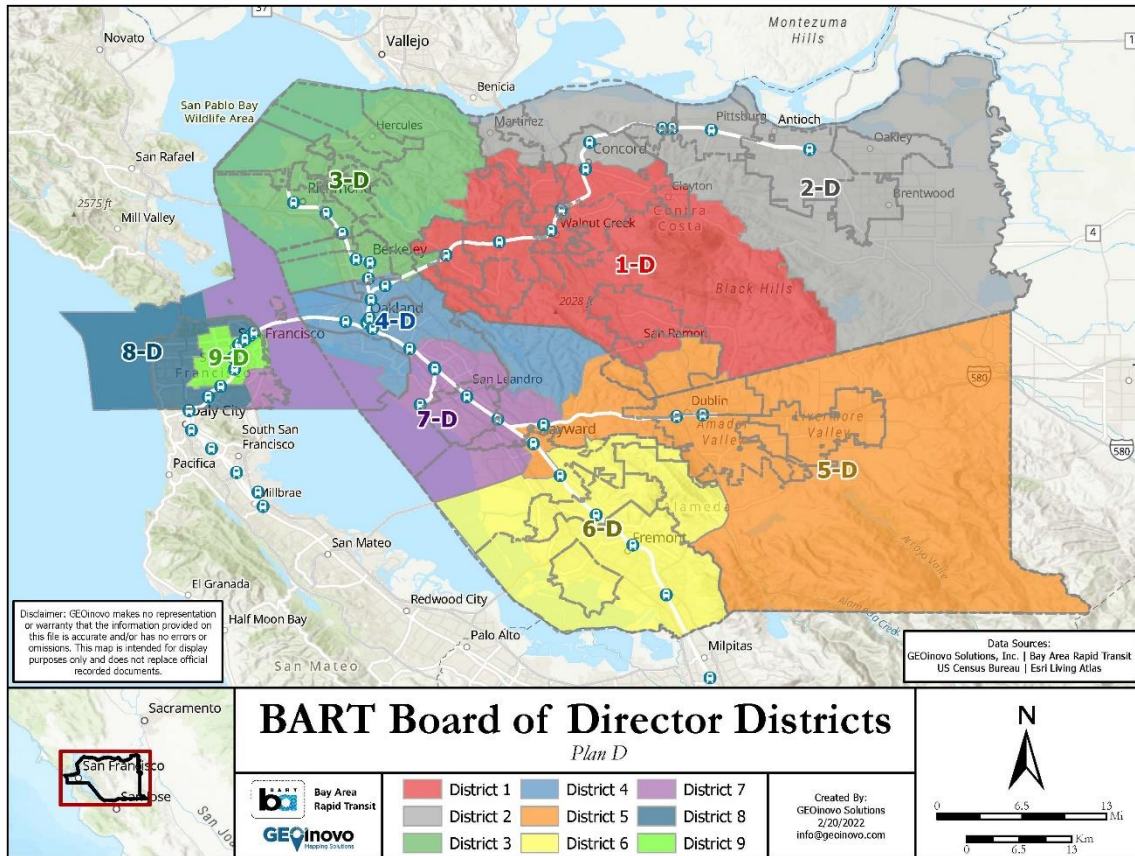
TABLE OF CONTENTS

1. Overview of Plan D	1
1.1. Overview Map of Plan D	1
2. Plan D by District	3
2.1. District 1	3
2.2. District 2	4
2.3. District 3	6
2.4. District 4	8
2.5. District 5	10
2.6. District 6	12
2.7. District 7	13
2.8. District 8	15
2.9. District 9	17

1. OVERVIEW OF PLAN D

1.1. OVERVIEW MAP OF PLAN D

Below shows the overview of Plan D. The individual districts are described further in Section 2. Plan D by District.



Plan D was developed to consider comments from the BART Board of Directors, the Mayor Cloven of Clayton, and members of the public. The following table details these comments.

Comment	Director/Public	Plan D
Chinatown	Director Li	✓
Bayview District	Director Li	✓
Marina District	Director Li	✓
City of Clayton	Director Allen, Mayor Cloven	✓
Morgan Territory Rd	Director Allen	✓
City of Orinda	Director Allen	✓
City of Lafayette	Director Allen	✓
Concord Station	Director Allen	✓

Martinez Station + population	Director Foley	✓
Sunol / Vargas Plateau / Niles Canyon	Director Ames	✓
Oakland, African American pop	Director Raburn, Public	✓
City of Oakland (2 districts) *	Director Raburn, Public	
City of Oakland (3 districts)	Director Raburn, Public	✓
El Cerrito Plaza	President Saltzman	✓
City of El Cerrito	President Saltzman	✓
City of Albany	President Saltzman	✓
Coliseum / OAK linked together	President Saltzman, Director Raburn	✓
UC Berkeley	President Saltzman	✓
D3: Geographic compactness	Pres. Saltzman, Dir. McPartland, Allen	✓
El Cerrito Plaza Station	President Saltzman	✓

*Feedback for the City of Oakland (2 Districts) were incorporated into Plan E.

Plan D proposes substantial changes to some of the districts to maintain population balanced districts. For example, District 7 only maintains 10.1% of CVAP when compared to the current district. By contrast, District 6 maintains 95.2% of CVAP when compared to the current district 6.

Changes to the Citizen Voting Age Population (CVAP) per District

Plan D proposes substantial changes to some of the districts to maintain population-balanced districts and incorporate feedback from the meetings. For example, District 7 only maintains 10.1% of CVAP when compared to the current district. By contrast, District 6 maintains 95.2% of CVAP when compared to the current district 6.

Detailed breakdowns for each District are provided in Section 2. Plan D by District.

Bay Area Rapid Transit (BART) Census Population Shifts for Proposed Board of Director Districts

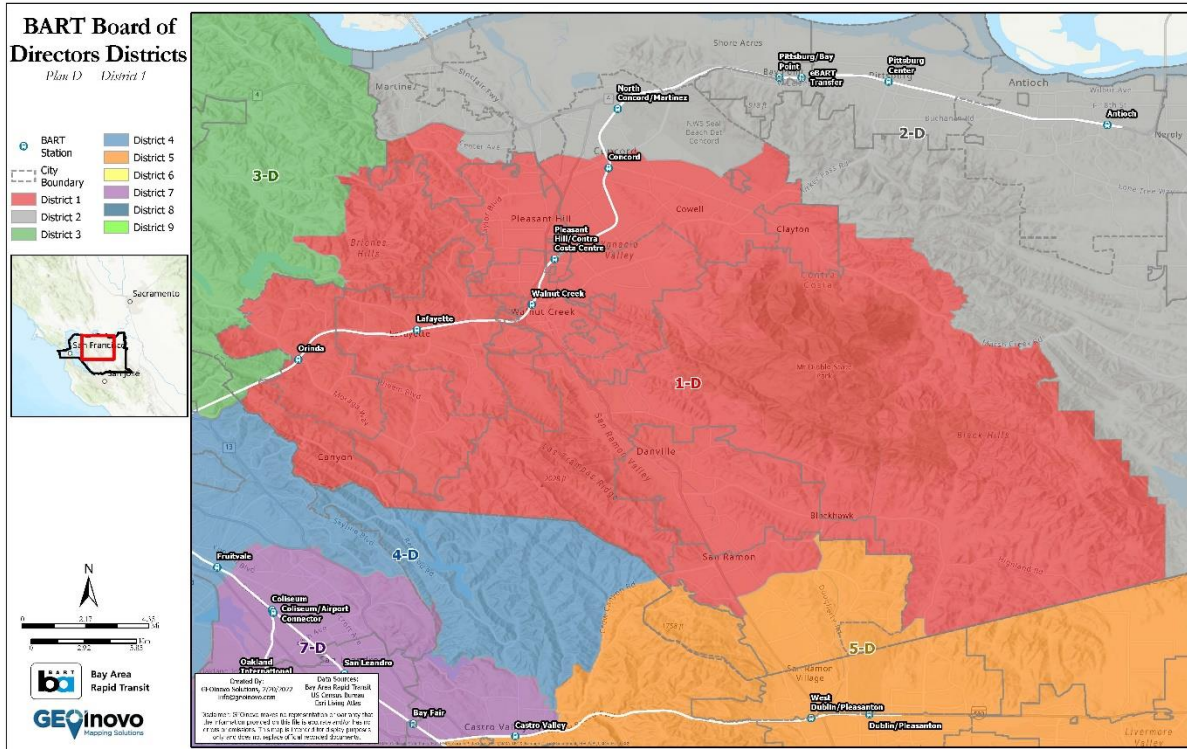
The population shifts for Plan D are similar to the CVAP population changes for each of the nine districts in Plan D. Population shifts for each district and each proposed plan vary depending on changes between 2010 and 2020 U.S. Census Block geography, different rates of population growth throughout the BART service area and responding to feedback from the public meetings.

This plan presents districts with varying levels of similarity to the current BART districts. The greatest change is in District 7 with only 10.6% of its current population remaining in District 7. The next district to show major changes is District 3 with 31.8% of its current population remaining in the proposed Plan D, District 3. District 4 maintains 63.0% of its current population. Districts 1, 8, and 9 maintain greater than 75% of their current populations and District 5 maintains 82.4% of its current population. The district most similar to the current boundaries is District 6 with 95.6% of its current population.

Detailed breakdowns for each District are provided in Section 2. Plan D by District.

2. PLAN D BY DISTRICT

2.1. DISTRICT 1



District 1 is in Contra Costa County and includes the Southern portion of the City of Martinez, Pleasant Hill, Walnut Creek, the City of Danville, the Northern part of the City of San Ramon, the City of Lafayette, the Southern part of the City of Concord, including Cowell, Four Corners, and Meinert, the City of Moraga, the City of Orinda, and the City of Clayton.

BART Stations included in District 1:

- Orinda (shared with District 3)
- Lafayette
- Walnut Creek
- Pleasant Hill/Contra Costa Centre
- Concord (shared with District 2)

2.1.1. CVAP Population Changes to District 1

The following table was taken from file “BART_CVAPShift_PlanD-E_20220219”.

Plan D, District 1: Pop. from Current Districts	Total Population	Percent Population
Total	294,118	100.0%
District 1	226,505	77.0%

BART Stations included in District 2:

- Concord (shared with District 1)
- North Concord/Martinez
- Pittsburg/Bay Point
- Antioch
- Pittsburg Center
- eBART Transfer

2.2.1. CVAP Population Changes to District 2

The following table was taken from file “BART_CVAPShift_PlanD-E_20220219”.

Plan D, District 2: Pop. from Current Districts	Total Population	Percent Population
Total	264,301	100.0%
District 1	25,888	9.8%
District 2	238,413	90.2%

Figure 3 District 2 maintains 90.2% of the current CVAP population and takes 9.8% from the current District 1.

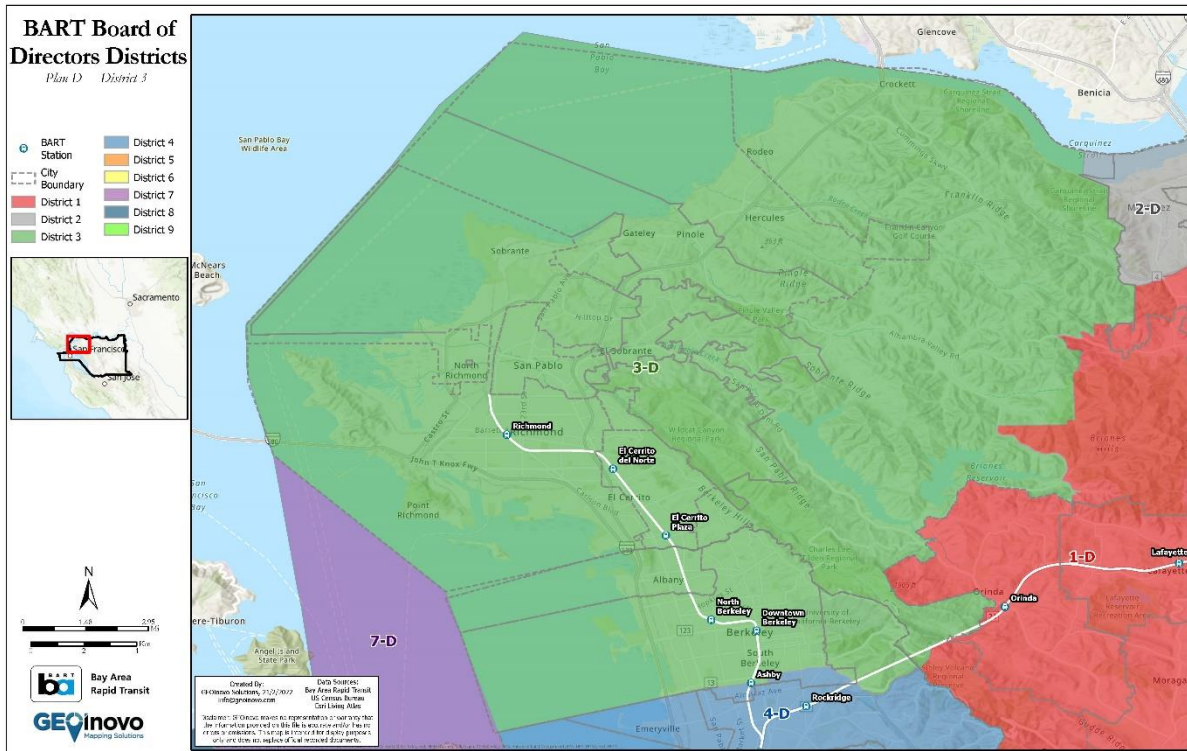
2.2.2. Population Changes to District 2

The following table was taken from file “BART_PopulationShift_PlanD-E_20220219”.

Plan D, District 2: Pop. from Current Districts	Total Population	Percent Population
Total	414,013	100.0%
District 1	35,491	8.6%
District 2	378,522	91.4%

Figure 4 District 2 maintains 91.4% of the current population and takes 8.6% from the current District 1.

2.3. DISTRICT 3



District 3 is in both Contra Costa and Alameda Counties and includes the City of Hercules, the City of Pinole, the City of San Pablo, the City of Richmond, the City of El Cerrito, the City of Albany, the majority of the City of Berkeley including the University of California Berkeley and excepting a few neighborhoods to the South of Ashby Ave, and unincorporated parts of Contra Costa County including North Richmond and El Sobrante.

BART Stations included in District 3:

- Richmond
- El Cerrito del Norte
- El Cerrito Plaza
- North Berkeley
- Downtown Berkeley
- Ashby (shared with District 4)
- Orinda (shared with District 1)

2.3.1. CVAP Population Changes to District 3

The following table was taken from file “BART_CVAPShift_PlanD-E_20220219”.

Plan D, District 3: Pop. from Current Districts	Total Population	Percent Population
Total	267,638	100.0%
District 1	622	0.2%
District 3	97,116	36.3%
District 7	169,900	63.5%

Figure 5 District 3 maintains 36.3% of the current CVAP population and takes 63.5% from the current District 7, and 0.2% from the current District 1.

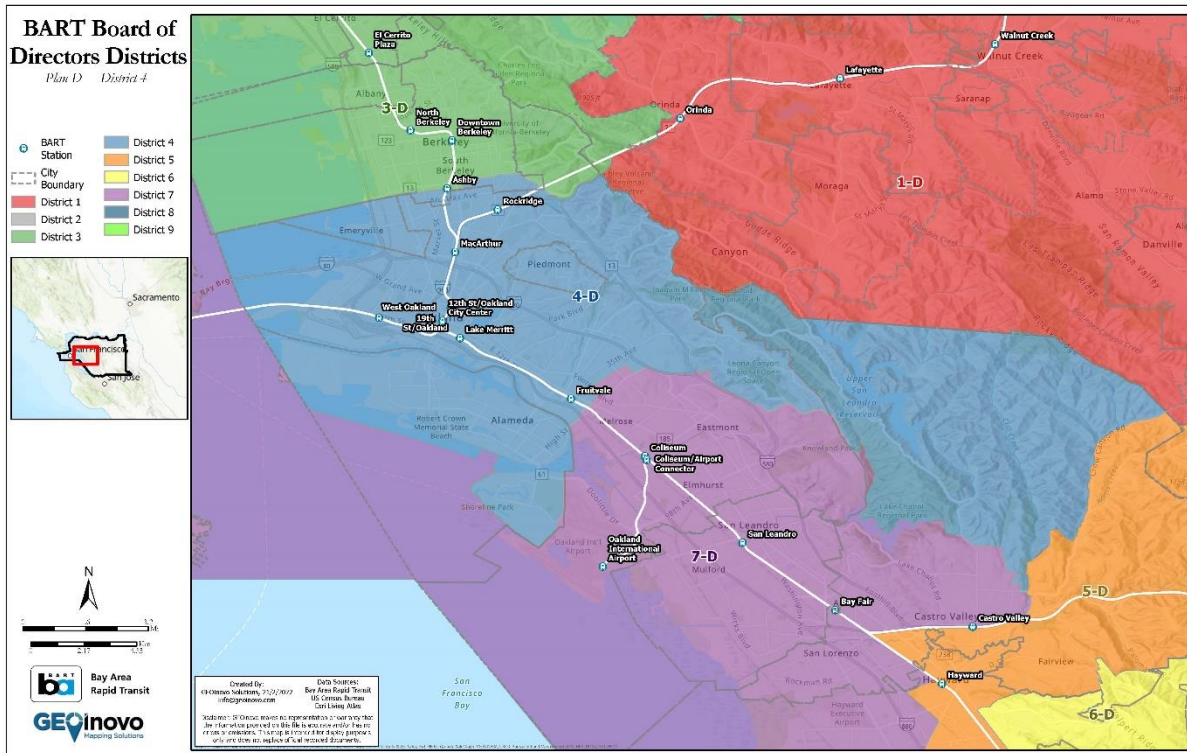
2.3.2. Population Changes to District 3

The following table was taken from file “BART_PopulationShift_PlanD-E_20220219”.

Plan D, District 3: Pop. from Current Districts	Total Population	Percent Population
Total	414,028	100.0%
District 1	718	0.2%
District 3	131,652	31.8%
District 7	281,658	68.0%

Figure 6 District 3 maintains 31.8% of the current population, takes 68.0% from the current District 7, and 0.2% from the current District 1.

2.4. DISTRICT 4



District 4 is in Alameda County and includes the City of Alameda, the City of Piedmont, the City of Emeryville, and the Oakland neighborhoods of West Oakland. Other points of interest in District 4 include Merritt College, Leona Canyon Regional Open Space, Upper San Leandro Reservoir, San Leandro Hills, Corica Park Golf Course, Robert Crown Memorial State Beach, and Middle Harbor Shoreline Park.

BART Stations included in District 4:

- Ashby (shared with District 3)
- Rockridge
- MacArthur
- 12th St/Oakland City Center
- 19th St/Oakland
- West Oakland
- Lake Merritt
- Fruitvale (shared with District 7)

2.4.1. CVAP Population Changes to District 4

The following table was taken from file “BART_CVAPShift_PlanD-E_20220219”.

Plan D, District 4: Pop. from Current Districts	Total Population	Percent Population
Total	287,650	100.0%
District 3	58,627	20.4%
District 4	176,339	61.3%
District 5	1,640	0.6%
District 7	51,044	17.7%

Figure 7 District 4 maintains 61.3% of the current CVAP population, takes 20.4% from the current District 3, 17.7% from District 7, and 0.6% from the current District 5.

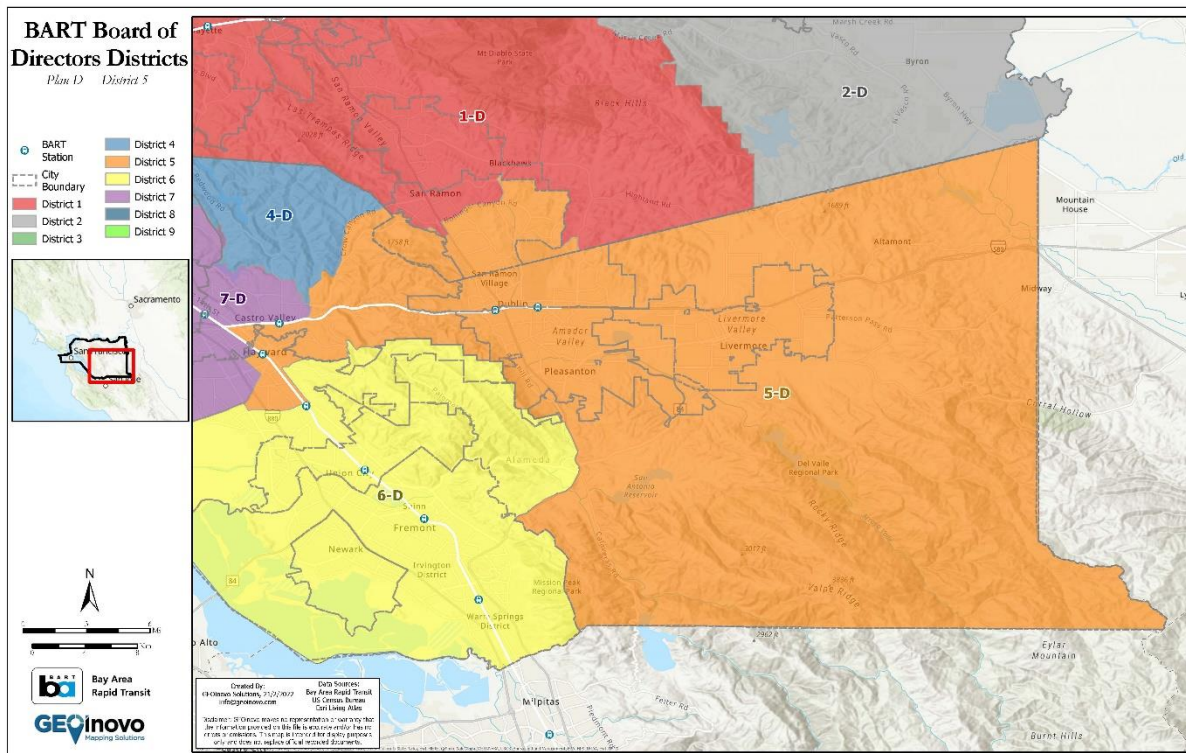
2.4.2. Population Changes to District 4

The following table was taken from file “BART_PopulationShift_PlanD-E_20220219”.

Plan D, District 4: Pop. from Current Districts	Total Population	Percent Population
Total	414,075	100.0%
District 3	77,028	18.6%
District 4	260,781	63.0%
District 5	2,430	0.6%
District 7	73,836	17.8%

Figure 8 District 4 maintains 63.0% of the current population, takes 18.6% from the current District 3, 17.8% from District 7, and 0.6% from District 5.

2.5. DISTRICT 5



District 5 is in Alameda and Contra Costa Counties and includes a portion of the City of Hayward ranging from the Castro Valley BART station in the North to the South Hayward station in the South. Major places and landmarks in this area include the Fairview, the Western part of Sorensen, Don Castro Regional Recreation Area, Castlewood Country Club and Altamont. District 5 also includes the City of Pleasanton, the City of Livermore, the City of Dublin, the Southeastern part of San Ramon, and rural areas of east Alameda County.

BART Stations included in District 5:

- Hayward (shared with District 7)
- South Hayward (shared with District 6)
- Castro Valley (shared with District 7)
- West Dublin/Pleasanton
- Dublin/Pleasanton

2.5.1. CVAP Population Changes to District 5

The following table was taken from file “BART_CVAPShift_PlanD-E_20220219”.

Plan D, District 5: Pop. from Current Districts	Total Population	Percent Population
Total	246,787	100.0%
District 1	32,334	13.1%
District 3	3,185	1.3%
District 5	209,108	84.7%
District 6	2,160	0.9%

Figure 9 District 5 maintains 84.7% of the current CVAP population, takes 13.1% from the current District 1, 1.3% from District 3, and 0.9% from the current District 6.

2.5.2. Population Changes to District 5

The following table was taken from file “BART_PopulationShift_PlanD-E_20220219”.

Plan D, District 5: Pop. from Current Districts	Total Population	Percent Population
Total	414,045	100.0%
District 1	64,071	15.5%
District 3	5,499	1.3%
District 5	341,099	82.4%
District 6	3,376	0.8%

Figure 10 District 5 maintains 82.4% of the current population, takes 15.5% from the current District 1, 1.3% from District 3, and 0.8% from the current District 6.

Plan D, District 6: Pop. from Current Districts	Total Population	Percent Population
Total	257,291	100.0%
District 5	12,336	4.8%
District 6	244,955	95.2%

Figure 11 District 6 maintains 95.2% of the current CVAP population and takes 4.8% from the current District 5.

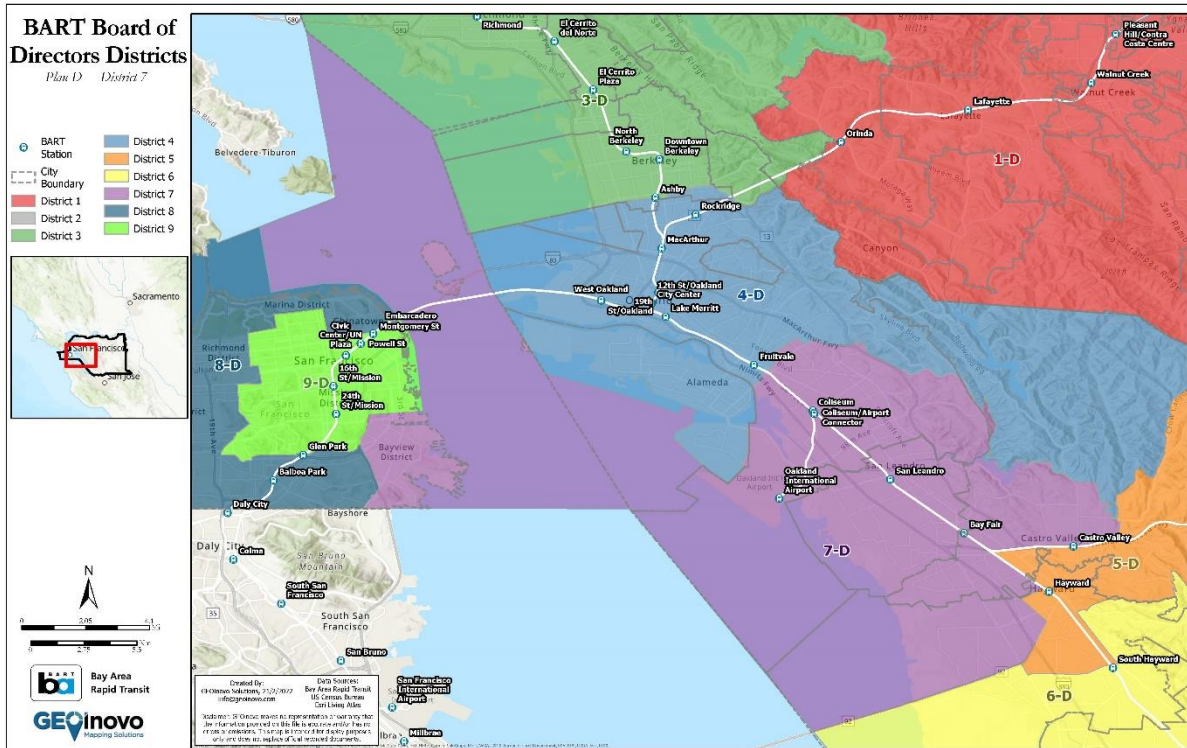
2.6.2. Population Changes to District 6

The following table was taken from file “BART_PopulationShift_PlanD-E_20220219”.

Plan D, District 6: Pop. from Current Districts	Total Population	Percent Population
Total	414,035	100.0%
District 5	18,363	4.4%
District 6	395,672	95.6%

Figure 12 District 6 maintains 95.6% of the current population and takes 4.4% from the current District 5.

2.7. DISTRICT 7



District 7 is in Alameda and San Francisco Counties and includes the City of San Leandro, the Northwestern part of the City of Hayward, and the Southern portion of Oakland including

neighborhoods Melrose, Eastmont, and Elmhurst. This District includes Treasure Island and the Bayview District of San Francisco. Places of interest in District 7 include Hayward Regional Shoreline, Hayward Executive Airport, Oakland International Airport, Oakland Zoo, Lake Chabot Golf Course, and Lake Chabot.

BART Stations included in District 7:

- Coliseum
- Coliseum/Airport Connector
- Oakland International Airport
- San Leandro
- Fruitvale (shared with District 4)
- Bay Fair
- Castro Valley (shared with District 5)
- Hayward (shared with District 5)

2.7.1. CVAP Population Changes to District 7

The following table was taken from file “BART_CVAPShift_PlanD-E_20220219”.

Plan D, District 7: Pop. from Current Districts	Total Population	Percent Population
Total	249,581	100.0%
District 3	86,590	34.7%
District 4	88,547	35.5%
District 5	47,029	18.8%
District 7	25,241	10.1%
District 8	1,651	0.7%
District 9	523	0.2%

Figure 13 District 7 maintains 10.1% of the current CVAP population, takes 35.5% from District 4, 34.7% from District 3, 18.8% from District 5, 0.7% from District 8, and 0.2% from District 9.

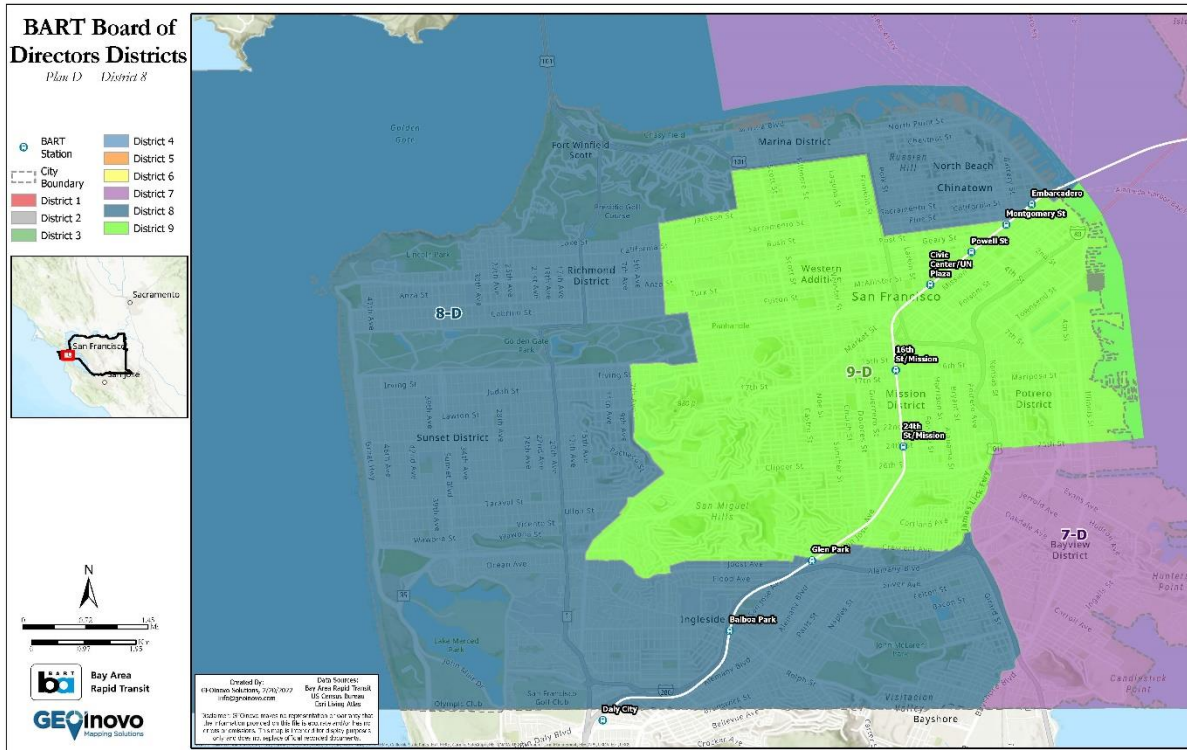
2.7.2. Population Changes to District 7

The following table was taken from file “BART_PopulationShift_PlanD-E_20220219”.

Plan D, District 7: Pop. from Current Districts	Total Population	Percent Population
Total	414,104	100.0%
District 3	134,925	32.6%
District 4	157,324	38.0%
District 5	74,852	18.1%
District 7	43,709	10.6%
District 8	2,349	0.6%
District 9	945	0.2%

Figure 14 District 7 maintains 10.6% of the current population, takes 38.0% from District 4, 32.6% from District 3, 18.1% from District 5, 0.6% from District 8, and 0.2% from District 9.

2.8. DISTRICT 8



District 8 is in San Francisco County and includes the following neighborhoods and points of interest in San Francisco: North Beach, Chinatown, Marina District, Fort Winfield Scott, Richmond District, Sunset District, Ingleside, and John McLaren Park, the Golden Gate Bridge, the Western part of the Bayview District, and the world-famous Lombard St.

BART Stations included in District 8:

- Montgomery St (shared with District 9)
- Embarcadero (shared with District 9)

- Glen Park (shared with District 9)
- Powell St (shared with District 9)
- Balboa Park

2.8.1. CVAP Population Changes to District 8

The following table was taken from file “BART_CVAPShift_PlanD-E_20220219”.

Plan D, District 8: Pop. from Current Districts	Total Population	Percent Population
Total	324,725	100.0%
District 7	2,260	0.7%
District 8	252,948	77.9%
District 9	69,517	21.4%

Figure 15 District 8 maintains 77.9% of the current CVAP population, takes 21.4% from the current District 9, and 0.7% from District 7.

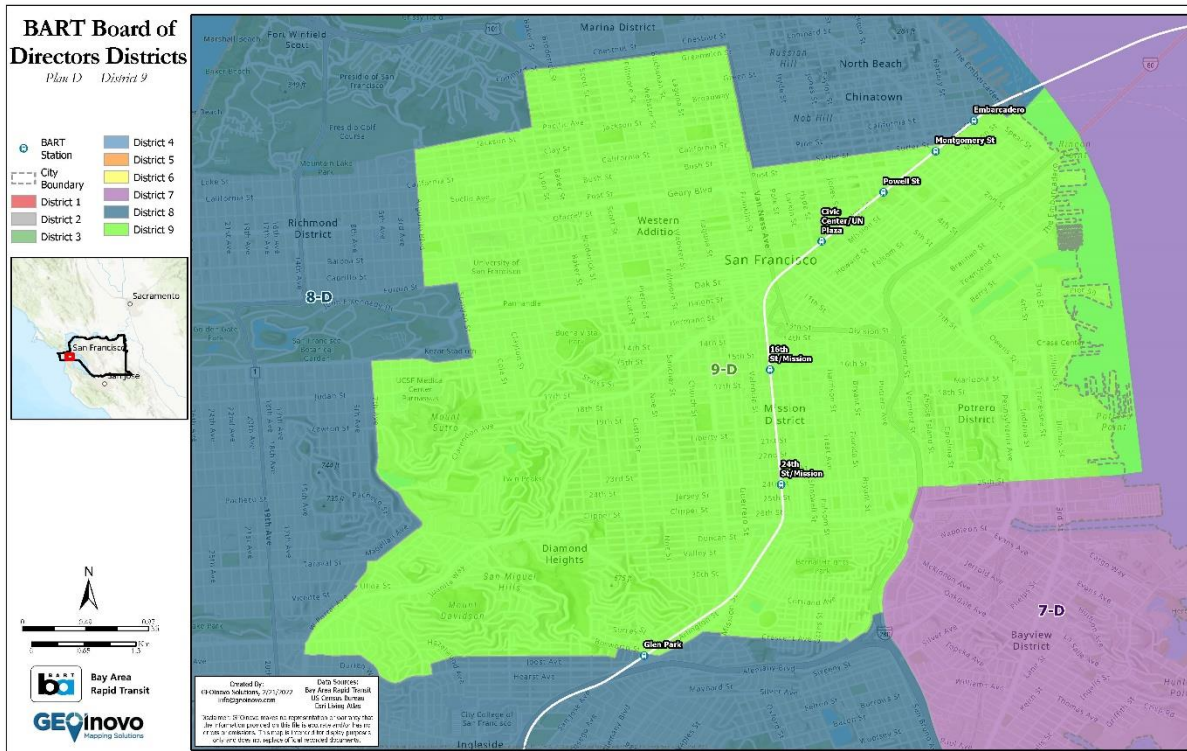
2.8.2. Population Changes to District 8

The following table was taken from file “BART_PopulationShift_PlanD-E_20220219”.

Plan D, District 8: Pop. from Current Districts	Total Population	Percent Population
Total	413,943	100.0%
District 7	2,998	0.7%
District 8	319,565	77.2%
District 9	91,380	22.1%

Figure 16 District 8 maintains 77.2% of the current population, takes 22.1% from the current District 9, and 0.7% from District 7.

2.9. DISTRICT 9



District 9 is in San Francisco County and includes the following neighborhoods and points of interest in San Francisco: Western Addition, Twin Peaks, Diamond Heights, Glen Canyon Park, St Mary’s Recreation Center, Bernal Heights Park, Mount Davidson, Union Square, Mission District, Potrero Center, Pier 50, and the Salesforce Transit Center.

BART Stations included in District 9:

- Montgomery St (shared with District 8)
- Embarcadero (shared with District 8)
- Powell St (shared with District 8)
- Civic Center/UN Plaza
- 16th St/Mission
- 24th St/Mission
- Glen Park (shared with District 8)

2.9.1. CVAP Population Changes to District 9

The following table was taken from file “BART_CVAPShift_PlanD-E_20220219”.

Plan D, District 9: Pop. from Current Districts	Total Population	Percent Population
Total	299,640	100.0%
District 7	22,407	7.5%
District 8	48,979	16.3%
District 9	228,254	76.2%

Figure 17 District 9 maintains 76.2% of the current CVAP population, takes 16.3% from the current District 8, and 7.5% from the current District 7.

2.9.2. Population Changes to District 9

The following table was taken from file “BART_PopulationShift_PlanD-E_20220219”.

Plan D, District 9: Pop. from Current Districts	Total Population	Percent Population
Total	414,047	100.0%
District 7	40,439	9.8%
District 8	61,776	14.9%
District 9	311,832	75.3%

Figure 18 District 9 maintains 75.3% of the current population, takes 14.9% from the current District 8, and 9.8% from District 7.