

2022

BART Redistricting: Public Plan 102



GEOinovo Solutions Inc.

BART Redistricting

3/1/2022

TABLE OF CONTENTS

Overview of Public Plan 102	1
Overview Map of Public Plan 102	1
Public Plan 102 by District	2
District 1	2
District 2	3
District 3	5
District 4	7
District 5	9
District 6	11
District 7	12
District 8	14
District 9	16

OVERVIEW OF PUBLIC PLAN 102

OVERVIEW MAP OF PUBLIC PLAN 102

Below shows the overview of Public Plan 102. The individual districts are described further in Section 2. Public Plan 102 by District.



Changes to the Citizen Voting Age Population (CVAP) per District

This plan was developed using Plan C as base and incorporates minor changes to District 6. Plan C was developed using destination analysis to points of interest such as Colleges/Universities, Clinics/Medical Facilities, Social Service Facilities, Government Facilities, and other locations that may be destination points for BART riders. With this plan, some Districts remained similar while others changed. For example, District 6 maintains 96.1% of CVAP when compared to current districts. By contrast, District 9 maintains 77.7% of CVAP when compared to current districts.

Detailed breakdowns for each District are provided in Section 2. Public Plan 102 by District.

Bay Area Rapid Transit (BART) Census Population Shifts for Proposed Board of Director Districts

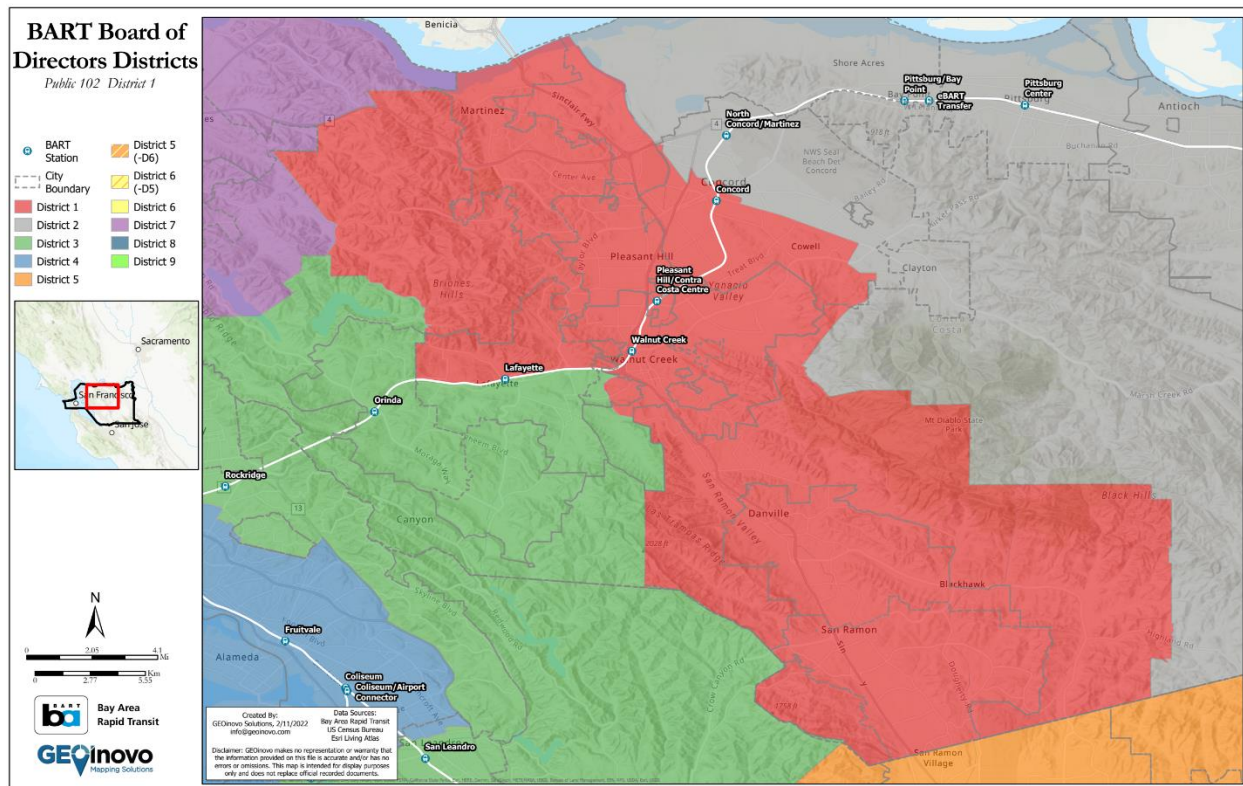
The population shifts for Public Plan 102 are similar to the CVAP population changes for each of the nine districts in Public Plan 102. Population shifts for each district and each proposed plan vary depending on changes between 2010 and 2020 U.S. Census Block geography and different rates of population growth throughout the BART service area.

In this plan, all districts maintain greater than 77% of their current population. Three districts (Districts 2, 4, and 7) maintain greater than 90% of their current population and one district (District 6) maintains greater than 95% of their population when compared to current the districts. Districts 3, 8, and 9 maintain greater than 77% of their current population and Districts 1 and 5 maintain over 89% of their current populations. This plan follows the current boundaries but does contain more changes to the boundaries that Plan B.

Detailed breakdowns for each District are provided in Section 2. Public Plan 102 by District.

PUBLIC PLAN 102 BY DISTRICT

DISTRICT 1



District 1 is in Contra Costa County and includes the City of Martinez, Pleasant Hill, most of Walnut Creek except a rural area in the Southwest of the City, the City of Danville, the City of San Ramon, the Northern part of the City of Lafayette – North of Route 24, and the Southern part of the City of Concord, including Cowell, Four Corners, and Meinert.

BART Stations included in District 1:

- Concord (shared with District 2)
- Pleasant Hill/Contra Costa Centre
- Walnut Creek
- Lafayette (shared with District 3)

CVAP Population Changes to District 1

The following table was taken from file “BART_CVAPShift_Pub102-104_20220219”.

Pub 102, District 1: Pop. from Current Districts	Total Population	Percent Population
Total	275,403	100.0%
District 1	252,930	91.8%
District 2	22,473	8.2%

Figure 1 District 1 maintains 91.8% of the current CVAP population and takes 8.2% from the current District 2.

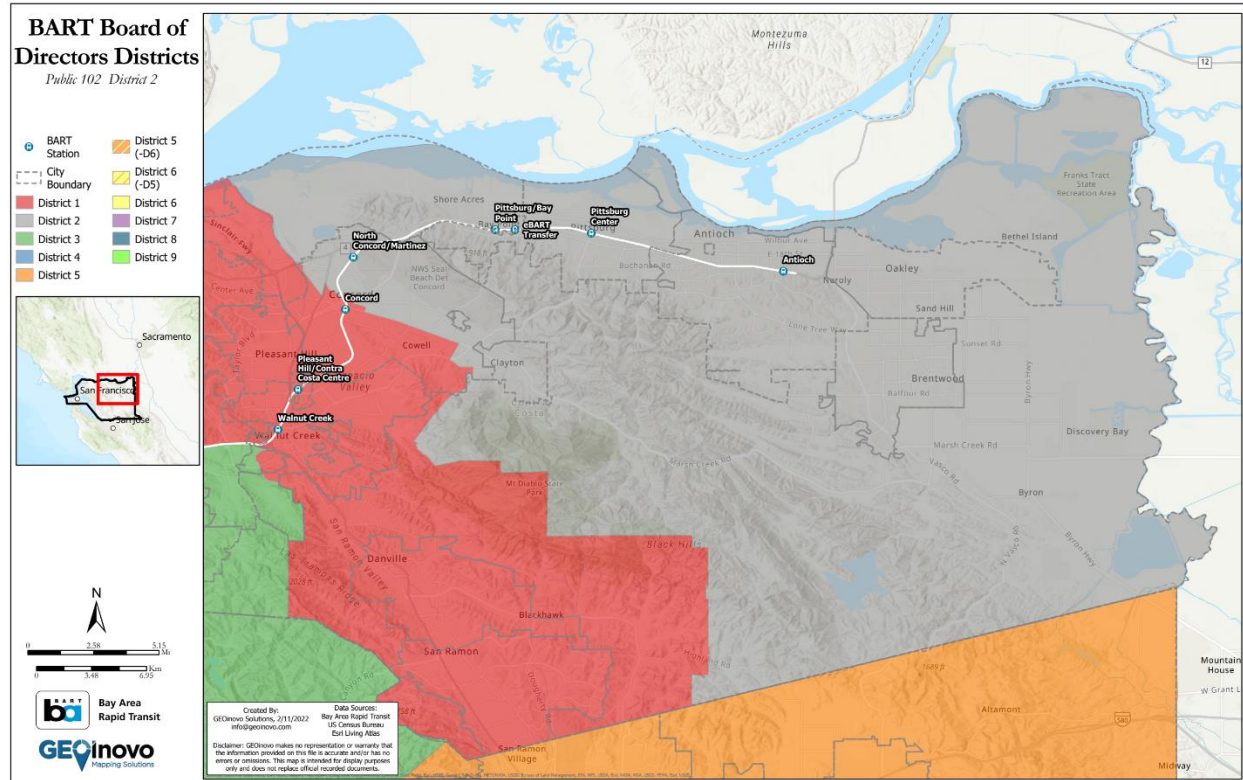
Population Changes to District 1

The following table was taken from file “BART_PopulationShift_Pub102-104_20220219”.

Pub 102, District 1: Pop. from Current Districts	Total Population	Percent Population
Total	414,067	100.0%
District 1	371,838	89.8%
District 2	42,229	10.2%

Figure 2 District 1 maintains 89.8% of the current population and takes 10.2% from the current District 2.

DISTRICT 2



District 2 is in Contra Costa County and includes the City of Pittsburg, the City of Antioch, the City of Brentwood, the City of Oakley, and the Northeastern part of the City of Concord including NWS Seal Beach Det Concord.

BART Stations included in District 2:

- Concord (shared with District 1)
- North Concord/Martinez
- Pittsburg/Bay Point
- Antioch
- Pittsburg Center
- eBART Transfer

CVAP Population Changes to District 2

The following table was taken from file “BART_CVAPShift_Pub102-104_20220219”.

Pub 102, District 2: Pop. from Current Districts	Total Population	Percent Population
Total	266,360	100.0%
District 1	22,308	8.4%
District 2	244,052	91.6%

Figure 3 District 2 maintains 91.6% of the current CVAP population and takes 8.4% from the current District 1.

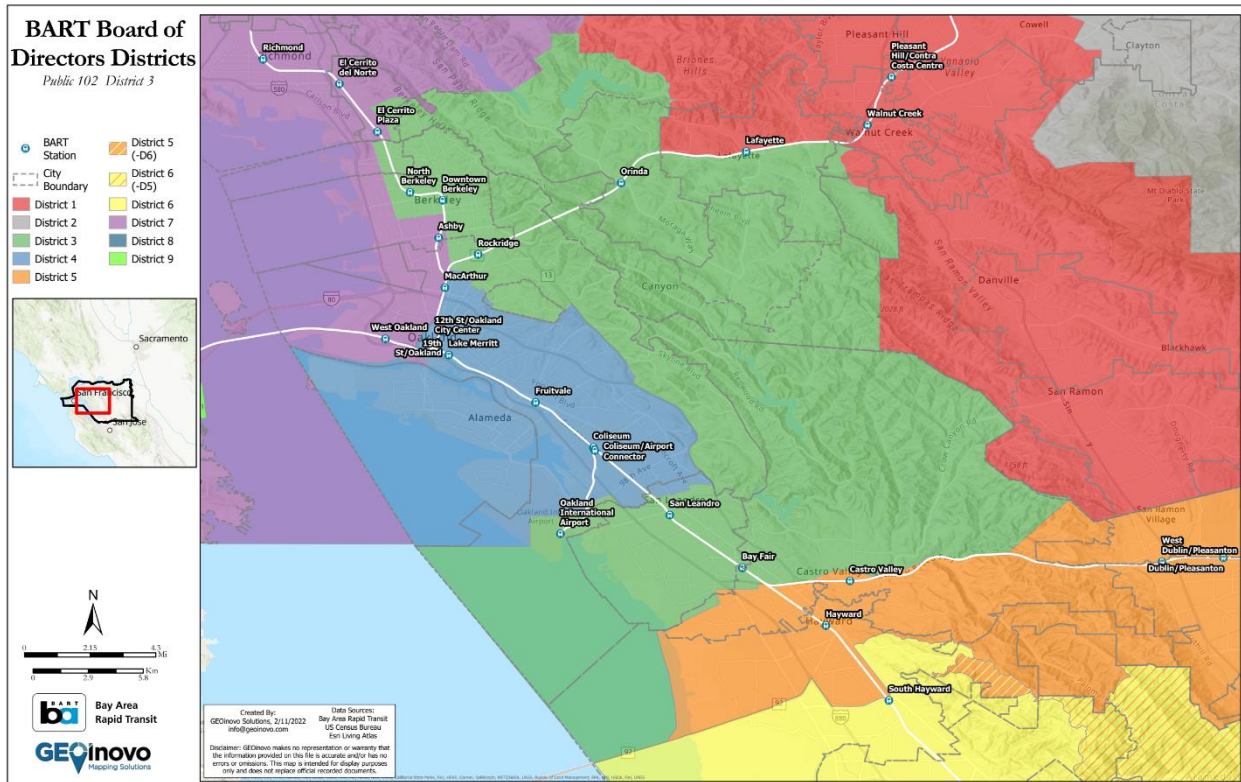
Population Changes to District 2

The following table was taken from file “BART_PopulationShift_Pub102-104_20220219”.

Pub 102, District 2: Pop. from Current Districts	Total Population	Percent Population
Total	414,070	100.0%
District 1	28,304	6.8%
District 2	385,766	93.2%

Figure 4 District 2 maintains 93.2% of the current population and takes 6.8% from the current District 1.

DISTRICT 3



District 3 is in both Contra Costa and Alameda Counties and includes the City of Orinda, the inland Southeastern part of El Cerrito, the Eastern part of Berkeley including North Berkeley, Downtown Berkeley, University of California-Berkeley, the City of Piedmont except for a small portion in the Southwest near Oakland Ave, the City of Moraga, and most of the City of San Leandro except for small areas in the north and south ends of the city.

BART Stations included in District 3:

- El Cerrito Plaza (shared with District 7)
- Downtown Berkeley (shared with District 7)
- Bay Fair
- North Berkeley
- Orinda
- Oakland International Airport
- San Leandro
- Rockridge
- Castro Valley (shared with District 5)
- Lafayette (shared with District 1)
- Ashby (shared with District 7)

CVAP Population Changes to District 3

The following table was taken from file “BART_CVAPShift_Pub102-104_20220219”.

Pub 102, District 3: Pop. from Current Districts	Total Population	Percent Population
Total	297,744	100.0%
District 1	9,891	3.3%
District 3	231,809	77.9%
District 4	18,205	6.1%
District 5	34,933	11.7%
District 7	2,906	1.0%

Figure 5 District 3 maintains 77.9% of the current CVAP population and takes 11.7% from the current District 5, 6.1% from the current District 4, 3.3% from the current District 1, and 1.0% from District 7.

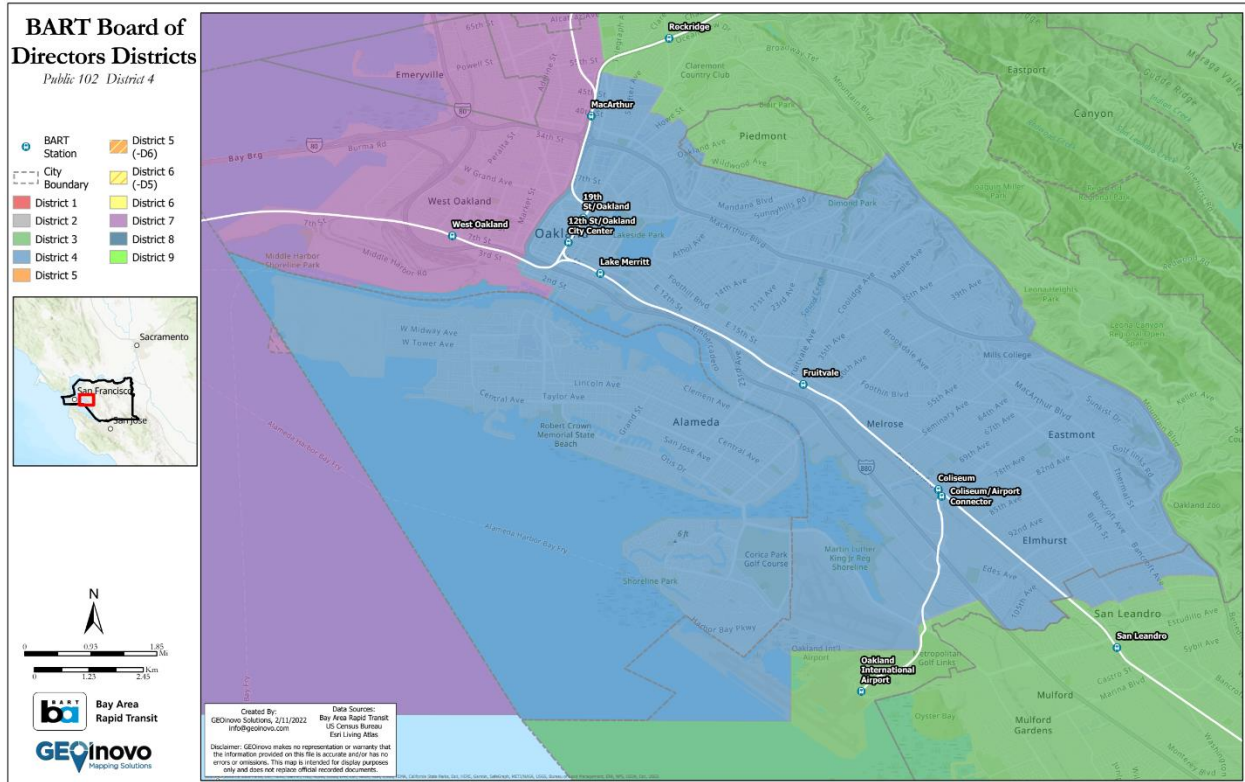
Population Changes to District 3

The following table was taken from file “BART_PopulationShift_Pub102-104_20220219”.

Pub 102, District 3: Pop. from Current Districts	Total Population	Percent Population
Total	413,957	100.0%
District 1	11,114	2.7%
District 3	323,078	78.0%
District 4	25,522	6.2%
District 5	50,936	12.3%
District 7	3,307	0.8%

Figure 6 District 3 maintains 78.0% of the current population and takes 12.3% from the current District 5, 6.2% from the current District 4, 2.7% from the current District 1, and 0.8% from the current District 7.

DISTRICT 4



District 4 is in Alameda County and includes the City of Alameda and the Oakland neighborhoods of Elmhurst, Eastmont, and Melrose. Other points of interest in District 4 include Mills College, Diamond Park, Oakland Medical Center, Eastmont Town Center, and Durant Square Mall.

BART Stations included in District 4:

- Coliseum
- 12th St/Oakland City Center (shared with District 7)
- Lake Merritt
- MacArthur (shared with District 7)
- 19th St/Oakland (shared with District 7)
- Fruitvale
- Coliseum/Airport Connector

CVAP Population Changes to District 4

The following table was taken from file “BART_CVAPShift_Pub102-104_20220219”.

Pub 102, District 4: Pop. from Current Districts	Total Population	Percent Population
Total	262,476	100.0%
District 3	15,282	5.8%
District 4	246,681	94.0%
District 7	513	0.2%

Figure 7 District 4 maintains 94.0% of the current CVAP population and takes 5.8% from the current District 3 and 0.2% from the current District 7.

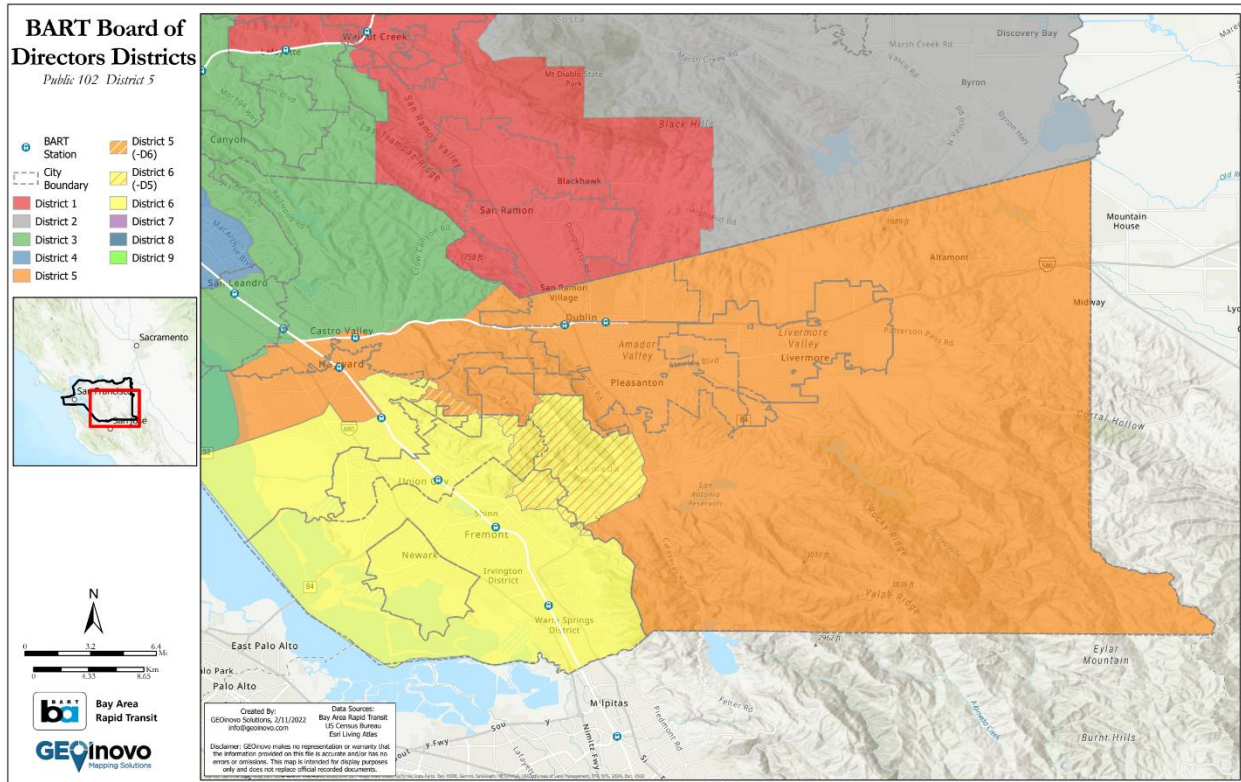
Population Changes to District 4

The following table was taken from file “BART_PopulationShift_Pub102-104_20220219”.

Pub 102, District 4: Pop. from Current Districts	Total Population	Percent Population
Total	413,944	100.0%
District 3	20,508	5.0%
District 4	392,583	94.8%
District 7	853	0.2%

Figure 8 District 4 maintains 94.8% of the current population and takes 5.0% from the current District 3 and 0.2% from District 7.

DISTRICT 5



District 5 is in Alameda County and includes the City of Hayward north of Highway 292 and the populated areas bounded by Highway 880 to the west, Highway 238 to the east, and W Tennyson Rd to the south. Major places and landmarks in this area include the Hayward Executive Airport, Hayward Regional Shoreline, Fairview, Sorensen, Don Castro Regional Recreation Area, and part of a residential development to the northwest of TPC Stonebrae Country Club. District 5 also includes the City of Pleasanton, the City of Livermore, the City of Dublin, and rural areas of east Alameda County.

BART Stations included in District 5:

- Hayward
- South Hayward (shared with District 6)
- Castro Valley (shared with District 3)
- West Dublin/Pleasanton
- Dublin/Pleasanton

CVAP Population Changes to District 5

The following table was taken from file “BART_CVAPShift_Pub102-104_20220219”.

Pub 102, District 5: Pop. from Current Districts	Total Population	Percent Population
Total	252,181	100.0%
District 3	27,086	10.7%
District 5	225,095	89.3%

Figure 9 District 5 maintains 89.3% of the current CVAP population and takes 10.7% from the current District 3.

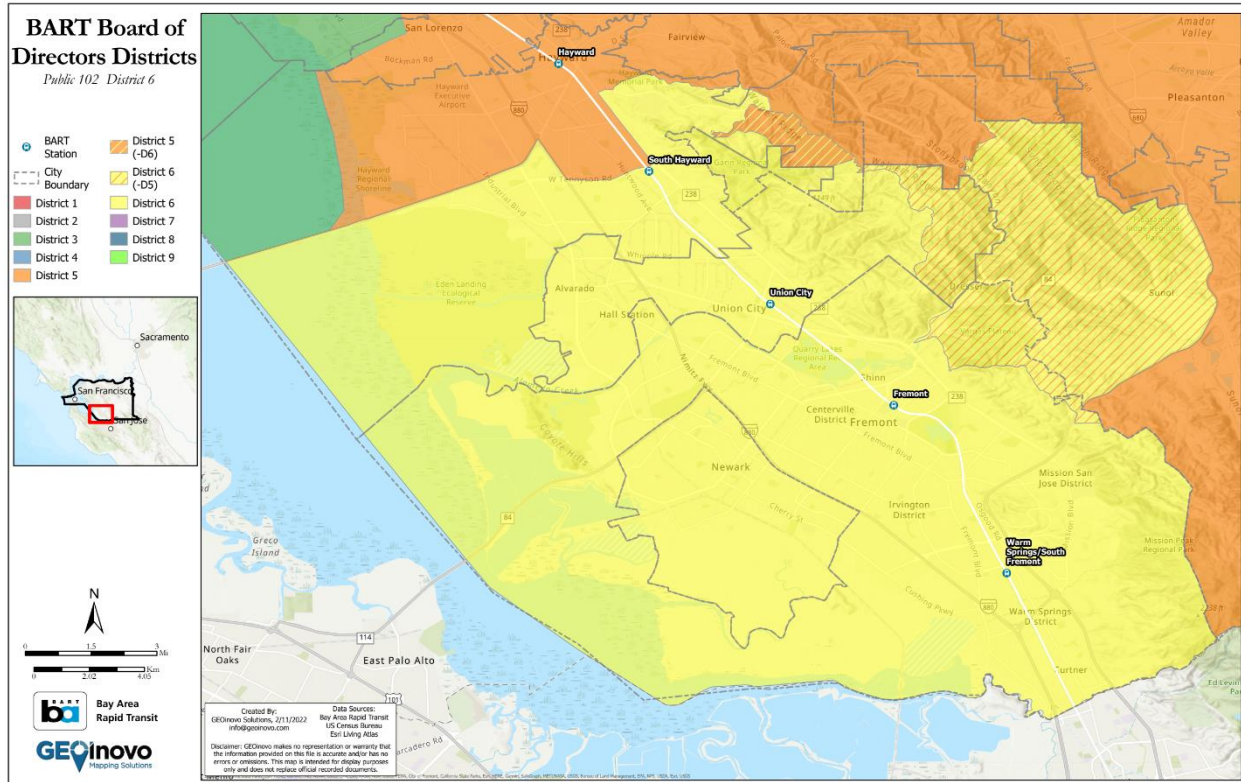
Population Changes to District 5

The following table was taken from file “BART_PopulationShift_Pub102-104_20220219”.

Pub 102, District 5: Pop. from Current Districts	Total Population	Percent Population
Total	414,212	100.0%
District 3	43,496	10.5%
District 5	370,716	89.5%

Figure 10 District 5 maintains 89.5% of the current population and takes 10.5% from the current District 3.

DISTRICT 6



District 6 is in Alameda County and includes the City of Fremont, Union City, the City of Newark, and the Southwestern part of the City of Hayward, and part of a residential development to the northwest of TPC Stonebrae Country Club. Major landmarks include California State University East Bay, Eden Landing Ecological Reserve, the northwest area of Mission Peak Regional Park, the Vargas Plateau, Pleasanton Ridge Regional Park, and Pleasanton Ridge Regional Park.

BART Stations included in District 6:

- Fremont
- South Hayward (shared with District 5)
- Union City
- Warm Springs/South Fremont

CVAP Population Changes to District 6

The following table was taken from file “BART_CVAPShift_Pub102-104_20220219”.

Pub 102, District 6: Pop. from Current Districts	Total Population	Percent Population
Total	257,200	100.0%
District 5	10,085	3.9%
District 6	247,115	96.1%

Figure 11 District 6 maintains 96.1% of the current CVAP population and takes 3.9% from the current District 5.

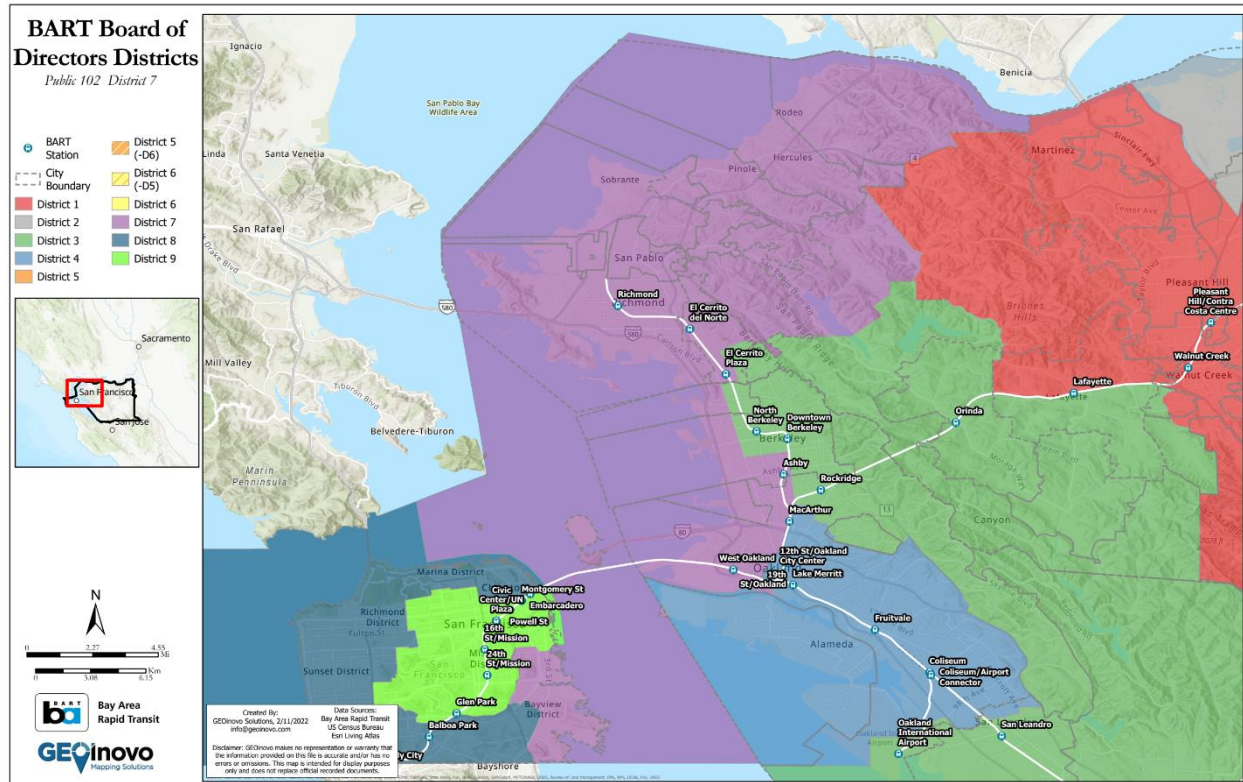
Population Changes to District 6

The following table was taken from file “BART_PopulationShift_Pub102-104_20220219”.

Pub 102, District 6: Pop. from Current Districts	Total Population	Percent Population
Total	414,140	100.0%
District 5	15,092	3.6%
District 6	399,048	96.4%

Figure 12 District 6 maintains 96.4% of the current population and takes 3.6% from the current District 5.

DISTRICT 7



District 7 is in Contra Costa, Alameda, and San Francisco Counties and includes the City of Richmond, Union City, the City of Pinole, the City of Hercules, the Western part of Berkeley along the waterfront, the City of Emeryville, West Oakland, the Bayview District, and the Potrero District on the east side of San Francisco.

BART Stations included in District 7:

- El Cerrito Plaza (shared with District 3)
- El Cerrito del Norte
- Downtown Berkeley (shared with District 3)
- West Oakland
- 12th St/Oakland City Center (shared with District 4)
- MacArthur (shared with District 4)
- Richmond
- 19th St/Oakland (shared with District 4)
- Ashby (shared with District 3)

CVAP Population Changes to District 7

The following table was taken from file “BART_CVAPShift_Pub102-104_20220219”.

Pub 102, District 7: Pop. from Current Districts	Total Population	Percent Population
Total	255,654	100.0%
District 1	220	0.1%
District 3	10,842	4.2%
District 7	235,864	92.3%
District 9	8,728	3.4%

Figure 13 District 7 maintains 92.3% of the current CVAP population and takes 4.2% from the current District 3, 3.4% from the current District 9, and 0.1% from District 1.

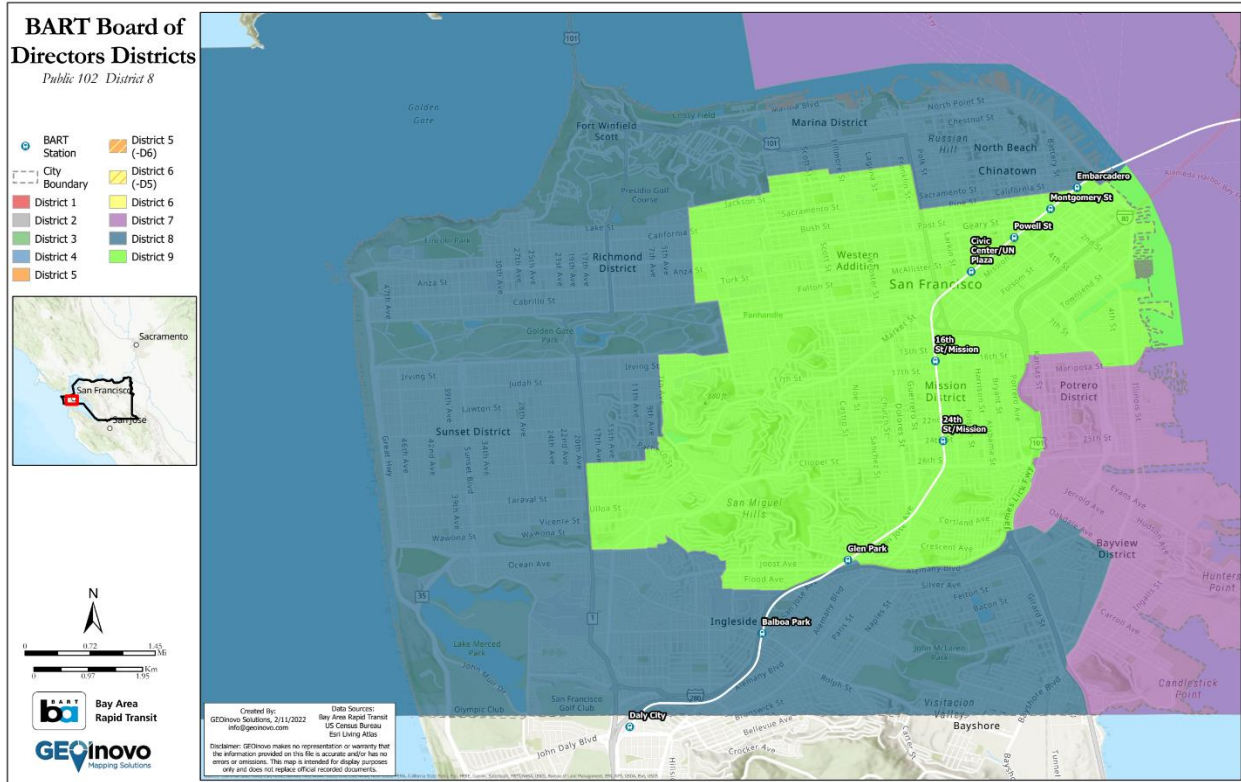
Population Changes to District 7

The following table was taken from file “BART_PopulationShift_Pub102-104_20220219”.

Pub 102, District 7: Pop. from Current Districts	Total Population	Percent Population
Total	414,046	100.0%
District 1	228	0.1%
District 3	15,585	3.8%
District 7	385,709	93.2%
District 9	12,524	3.0%

Figure 14 District 7 maintains 93.2% of the current population and takes 3.8% from the current District 3, 3.0% from the current District 9, and 0.1% from District 1.

DISTRICT 8



District 8 is in San Francisco County include the following neighborhoods and points of interest in San Francisco: North Beach, Chinatown, Marina District, Fort Winfield Scott, Richmond District, Sunset District, Ingleside, and John McLaren Park, the Golden Gate Bridge, and the world-famous Lombard St.

BART Stations included in District 8:

- Glen Park (shared with District 9)
- Balboa Park (shared with District 9)
- Montgomery St (shared with District 9)
- Powell St (shared with District 9)
- Embarcadero (shared with District 9)

CVAP Population Changes to District 8

The following table was taken from file “BART_CVAPShift_Pub102-104_20220219”.

Pub 102, District 8: Pop. from Current Districts	Total Population	Percent Population
Total	322,943	100.0%
District 7	11,371	3.5%
District 8	256,379	79.4%
District 9	55,193	17.1%

Figure 15 District 8 maintains 79.4% of the current CVAP population and takes 17.1% from the current District 9 and 3.5% from the current District 7.

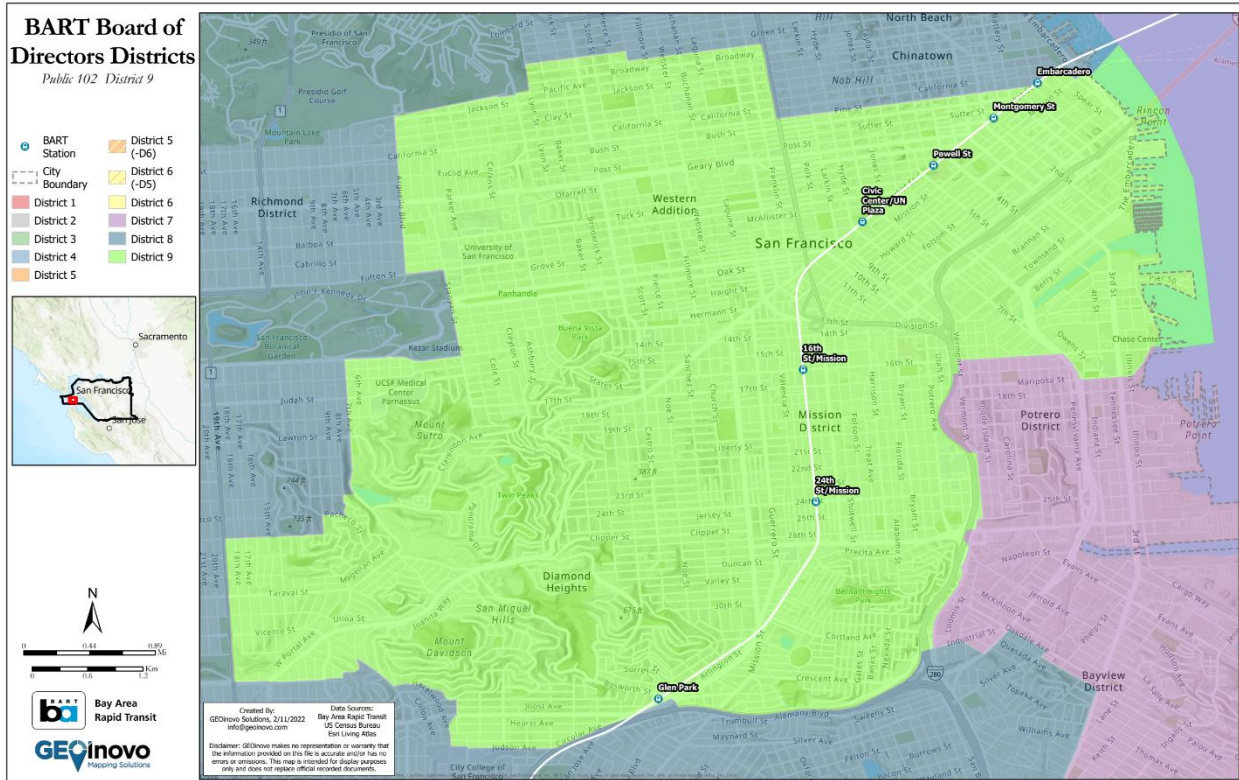
Population Changes to District 8

The following table was taken from file “BART_PopulationShift_Pub102-104_20220219”.

Pub 102, District 8: Pop. from Current Districts	Total Population	Percent Population
Total	414,057	100.0%
District 7	17,323	4.2%
District 8	323,877	78.2%
District 9	72,857	17.6%

Figure 16 District 8 maintains 78.2% of the current population and takes 17.6% from the current District 9 and 4.2% from District 7.

DISTRICT 9



District 9 is in San Francisco County includes the following neighborhoods and points of interest in San Francisco: Western Addition, Twin Peaks, Diamond Heights, Glen Canyon Park, St Mary's Recreation Center, Bernal Heights Park, Union Square, Mission District, Potrero Center, Pier 50, and the Salesforce Transit Center.

BART Stations included in District 9:

- Civic Center/UN Plaza
- Glen Park (shared with District 8)
- Balboa Park (shared with District 8)
- 16th St/Mission
- 24th St/Mission
- Montgomery St (shared with District 8)
- Powell St (shared with District 8)
- Embarcadero (shared with District 8)

CVAP Population Changes to District 9

The following table was taken from file “BART_CVAPShift_Pub102-104_20220219”.

Pub 102, District 9: Pop. from Current Districts	Total Population	Percent Population
Total	301,770	100.0%
District 7	20,198	6.7%
District 8	47,199	15.6%
District 9	234,373	77.7%

Figure 17 District 9 maintains 77.7% of the current CVAP population and takes 15.6% from the current District 8 and 6.7% from the current District 7.

Population Changes to District 9

The following table was taken from file “BART_PopulationShift_Pub102-104_20220219”.

Pub 102, District 9: Pop. from Current Districts	Total Population	Percent Population
Total	414,037	100.0%
District 7	35,448	8.6%
District 8	59,813	14.4%
District 9	318,776	77.0%

Figure 18 District 9 maintains 77.0% of the current population and takes 14.4% from the current District 8 and 8.6% from District 7.