

2022

BART Redistricting: Public Plan
103



GEOinovo Solutions Inc.

BART Redistricting

3/1/2022

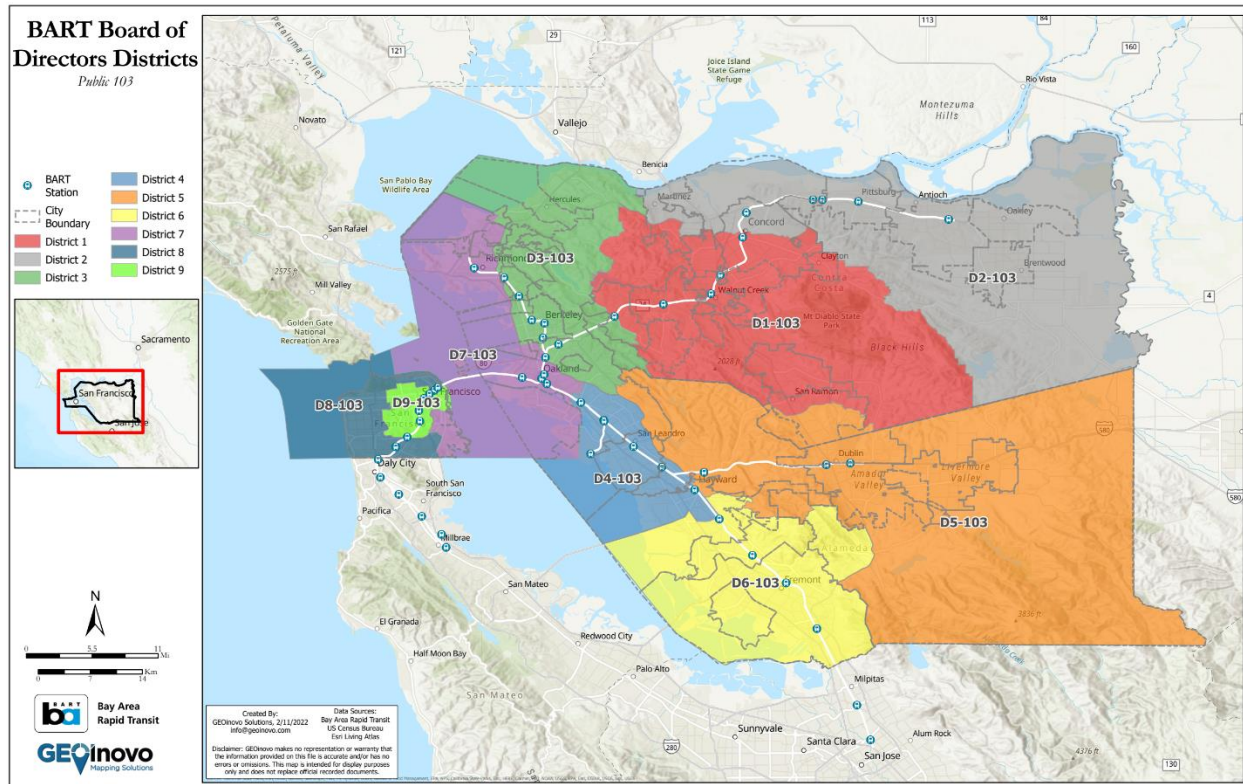
TABLE OF CONTENTS

Overview of Public Plan 103	1
Overview Map of Public Plan 103	1
Public Plan 103 by District	2
District 1	2
District 2	4
District 3	5
District 4	7
District 5	9
District 6	11
District 7	12
District 8	14
District 9	15

OVERVIEW OF PUBLIC PLAN 103

OVERVIEW MAP OF PUBLIC PLAN 103

Below shows the overview of Public Plan 103. The individual districts are described further in Section 2. Public Plan 103 by District.



Changes to the Citizen Voting Age Population (CVAP) per District

This plan was developed using Plan C as base and incorporates feedback for District 1 and District 6 while adjusting for population balance. Plan C was developed using destination analysis to points of interest such as Colleges/Universities, Clinics/Medical Facilities, Social Service Facilities, Government Facilities, and other locations that may be destination points for BART riders. With this plan, some Districts remained similar while others changed. For example, District 6 maintains 96.1% of CVAP when compared to current districts. By contrast, District 4 only maintains 46.4% of CVAP when compared to current districts.

Detailed break downs for each District are provided in Section 2. Public Plan 103 by District.

Bay Area Rapid Transit (BART) Census Population Shifts for Proposed Board of Director Districts

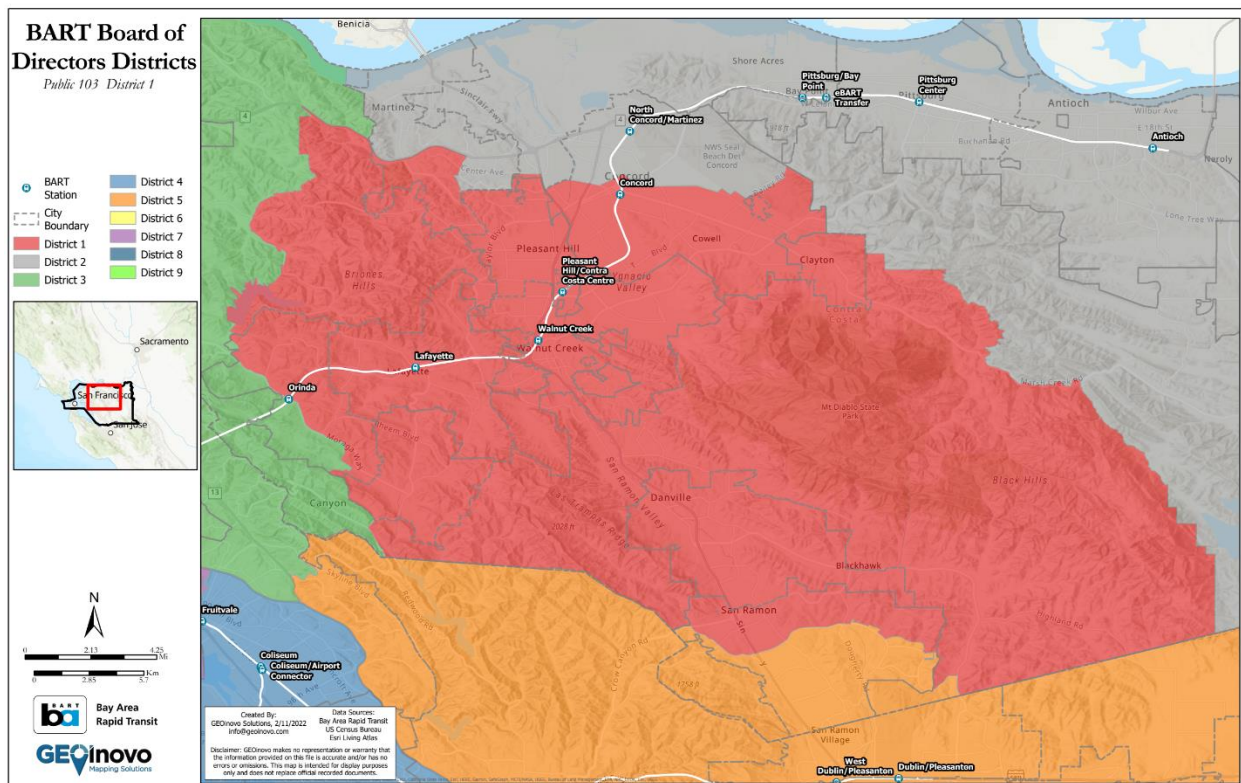
The population shifts for Public Plan 103 are similar to the CVAP population changes for each of the nine districts in Public Plan 103. Population shifts for each district and each proposed plan vary depending on changes between 2010 and 2020 U.S. Census Block geography and different rates of population growth throughout the BART service area.

In this plan, a district’s similarity to the current districts varies with the lowest similarity only at 48.2% for District 4 and the highest similarity at 96.4% for District 6. all districts maintain at least 48% of their current population. Districts 3 and 7 maintain 50% or more of their current populations. Districts 1, 8, and 9 maintain greater than 75% of their current populations. District 2 maintains greater than 90% of its current population and District 5 maintains greater than 80% of its current population. This plan follows the current boundaries but does contain more changes to the boundaries that Plan B and is most similar to Plan C and Public Plan 102.

Detailed breakdowns for each District are provided in Section 2. Public Plan 103 by District.

PUBLIC PLAN 103 BY DISTRICT

DISTRICT 1



District 1 is in Contra Costa County and includes the Southern portion of the City of Martinez, Pleasant Hill, Walnut Creek, the City of Danville, the Northern part of the City of San Ramon, the City of Lafayette, the Southern part of the City of Concord, including Cowell, Four Corners, and Meinert, the City of Moraga, the Eastern part of the City of Orinda – East of Moraga Way, and the City of Clayton.

BART Stations included in District 1:

- Orinda (shared with District 3)
- Lafayette
- Walnut Creek

- Pleasant Hill/Contra Costa Centre
- Concord (shared with District 2)

CVAP Population Changes to District 1

The following table was taken from file “BART_CVAPShift_Pub102-104_20220219”.

Pub 103, District 1: Pop. from Current Districts	Total Population	Percent Population
Total	292,415	100.0%
District 1	228,284	78.1%
District 2	28,156	9.6%
District 3	35,975	12.3%

Figure 1 District 1 maintains 78.1% of the current CVAP population, takes 12.3% from the current District 3, and 9.6% from District 2.

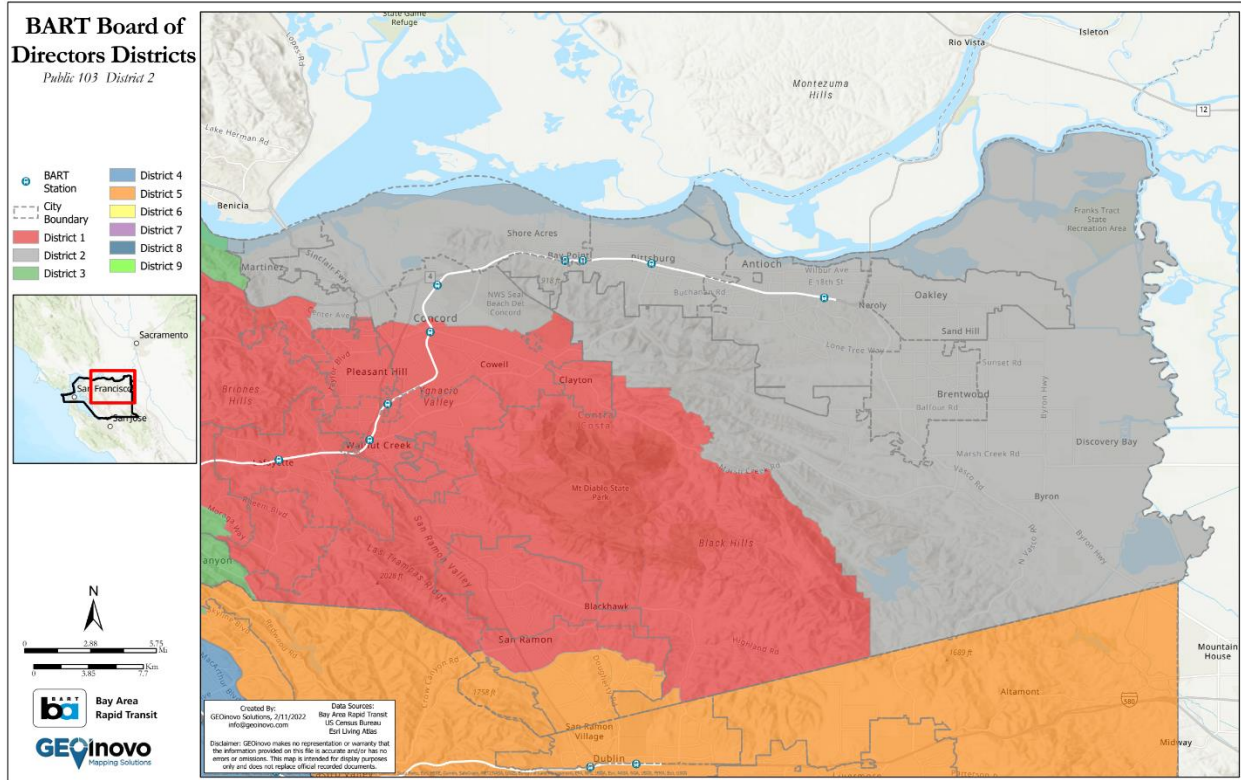
Population Changes to District 1

The following table was taken from file “BART_PopulationShift_Pub102-104_20220219”.

Pub 103, District 1: Pop. from Current Districts	Total Population	Percent Population
Total	414,023	100.0%
District 1	315,981	76.3%
District 2	49,463	11.9%
District 3	48,579	11.7%

Figure 2 District 1 maintains 76.3% of the current population, takes 11.9% from the current District 2, and 11.7% from District 3.

DISTRICT 2



District 2 is in Contra Costa County and includes the City of Pittsburg, the City of Antioch, the City of Brentwood, the City of Oakley, the Northeastern part of the City of Concord including NWS Seal Beach Det Concord, and the Northern part of the City of Martinez including the unincorporated neighborhoods of Mountain View and Vine Hill.

BART Stations included in District 2:

- Concord (shared with District 1)
- North Concord/Martinez
- Pittsburg/Bay Point
- Antioch
- Pittsburg Center
- eBART Transfer

CVAP Population Changes to District 2

The following table was taken from file “BART_CVAPShift_Pub102-104_20220219”.

Pub 103, District 2: Pop. from Current Districts	Total Population	Percent Population
Total	264,370	100.0%
District 1	26,001	9.8%
District 2	238,369	90.2%

Figure 3 District 2 maintains 90.2% of the current CVAP population and takes 9.8% from the current District 1.

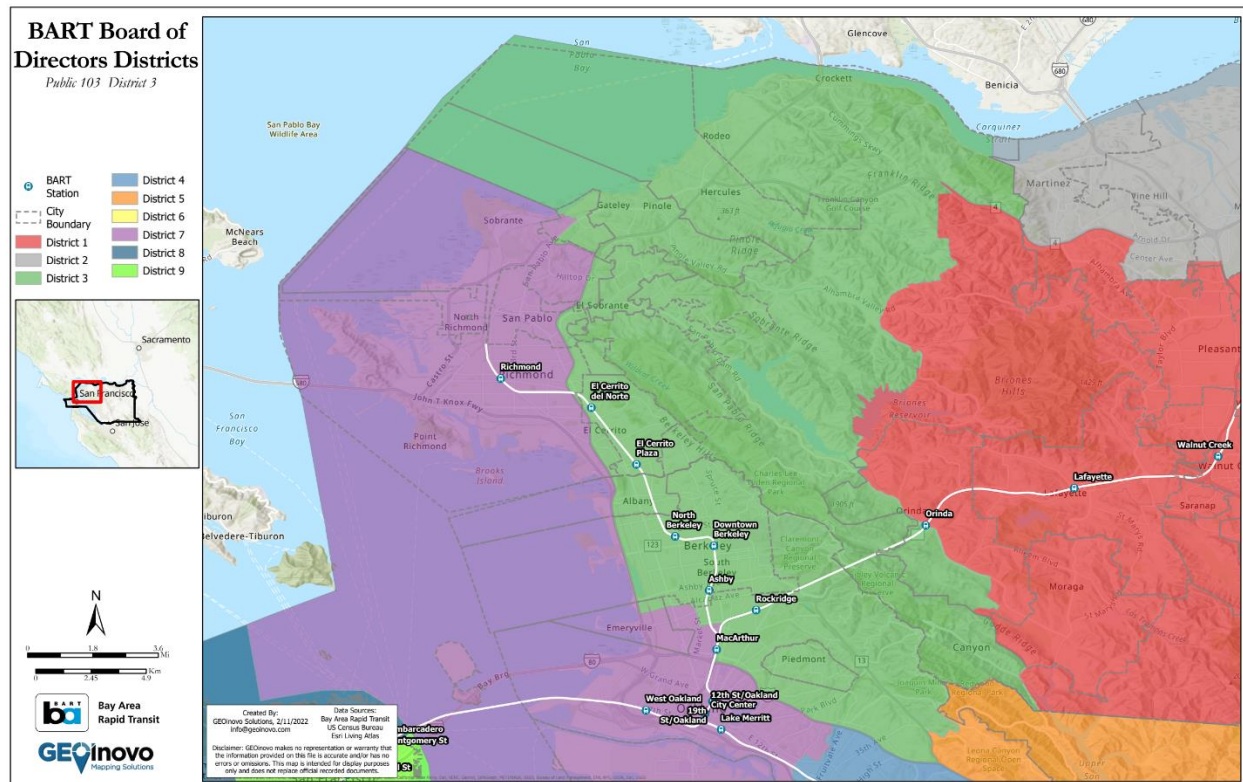
Population Changes to District 2

The following table was taken from file “BART_PopulationShift_Pub103-104_20220219”.

Pub 103, District 2: Pop. from Current Districts	Total Population	Percent Population
Total	414,003	100.0%
District 1	35,471	8.6%
District 2	378,532	91.4%

Figure 4 District 2 maintains 91.4% of the current population and takes 8.6% from the current District 1.

DISTRICT 3



District 3 is in both Contra Costa and Alameda Counties and includes the Western part of the City of Orinda, the majority of El Cerrito except an area west of Route 80, most of Berkeley except for part of the waterfront (Golden Gate Fields, McLaughlin Eastshore SP-University, and Cesar E Chavez Park, the City of Hercules, the City of Pinole, the City of Oakland East of MacArthur Blvd including Dimond Park, Bushrod Park, Oakland Technical High School, Claremont Country Club, and Holy Names University, unincorporated parts of Contra Costa County, Rolling Hills Memorial Park, El Sobrante, Tara Hills, and San Pablo Reservoir. the City

of Piedmont, the City of Moraga, and most of the City of San Leandro except for small areas in the north and south ends of the city.

BART Stations included in District 3:

- Orinda (shared with District 1)
- Rockridge
- MacArthur (shared with District 7)
- Ashby
- Downtown Berkeley
- North Berkeley
- El Cerrito Plaza
- El Cerrito del Norte (shared with District 7)

CVAP Population Changes to District 3

The following table was taken from file “BART_CVAPShift_Pub102-104_20220219”.

Pub 103, District 3: Pop. from Current Districts	Total Population	Percent Population
Total	301,303	100.0%
District 1	310	0.1%
District 3	154,283	51.2%
District 4	32,736	10.9%
District 7	113,974	37.8%

Figure 5 District 3 maintains 51.2% of the current CVAP population, takes 37.8% from the current District 7, 10.9% from the current District 4, and 0.1% from the current District 1.

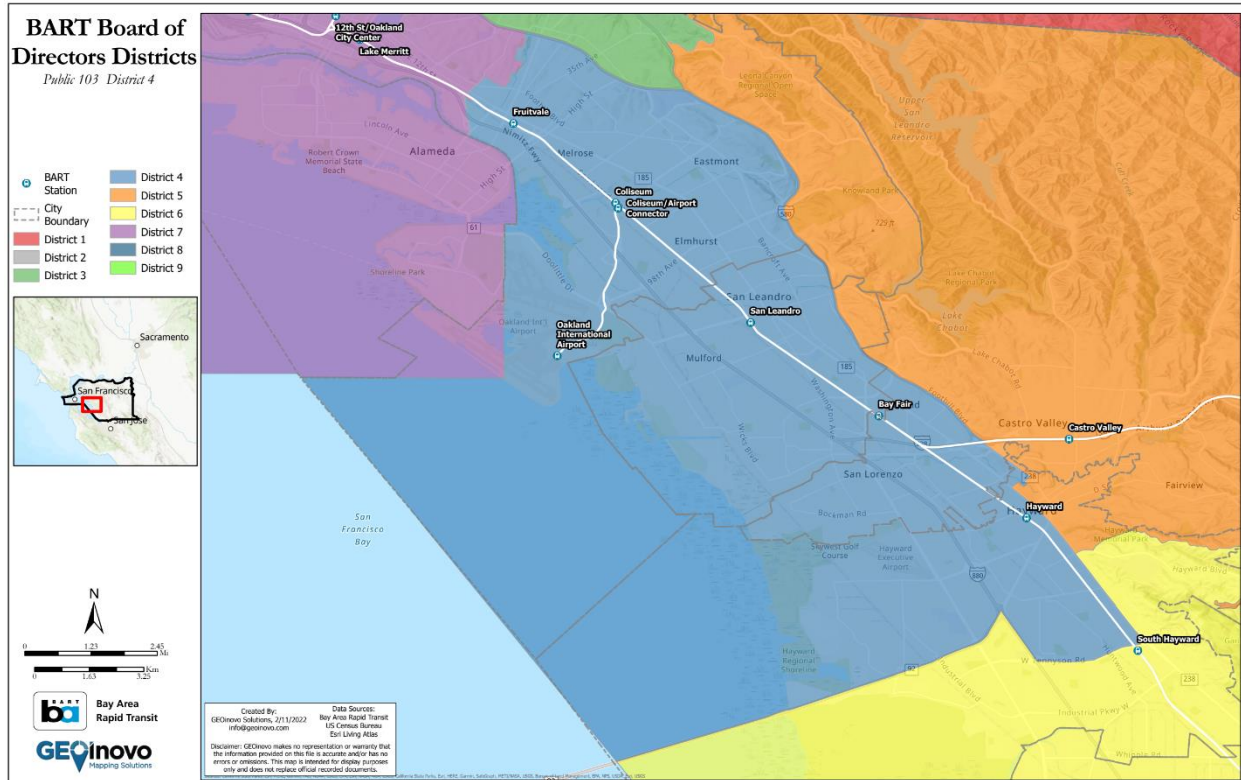
Population Changes to District 3

The following table was taken from file “BART_PopulationShift_Pub102-104_20220219”.

Pub 103, District 3: Pop. from Current Districts	Total Population	Percent Population
Total	414,115	100.0%
District 1	350	0.1%
District 3	207,115	50.0%
District 4	45,265	10.9%
District 7	161,385	39.0%

Figure 6 District 3 maintains 50.0% of the current population and takes 39.0% from the current District 7, 10.9% from the current District 4, and 0.1% from the current District 1.

DISTRICT 4



District 4 is in Alameda County and includes the Oakland neighborhoods of Elmhurst, Eastmont, Melrose, Martin Luther King Jr. Reg Shoreline, and most of Oakland International Airport. District 4 also includes the City of San Leandro except for the part East of Route 580, the part of San Lorenzo west of Foothill Blvd, and the Northwestern part of the City of Hayward.

BART Stations included in District 4:

- Fruitvale
- Coliseum
- Coliseum/Airport Connector
- Oakland International Airport
- San Leandro
- Bay Fair
- Hayward (shared with District 5)
- South Hayward (shared with District 6)

CVAP Population Changes to District 4

The following table was taken from file “BART_CVAPShift_Pub102-104_20220219”.

Pub 103, District 4: Pop. from Current Districts	Total Population	Percent Population
Total	239,362	100.0%
District 3	81,143	33.9%
District 4	111,149	46.4%
District 5	47,070	19.7%

Figure 7 District 4 maintains 46.4% of the current CVAP population, takes 33.9% from the current District 3, and 19.7% from the current District 5.

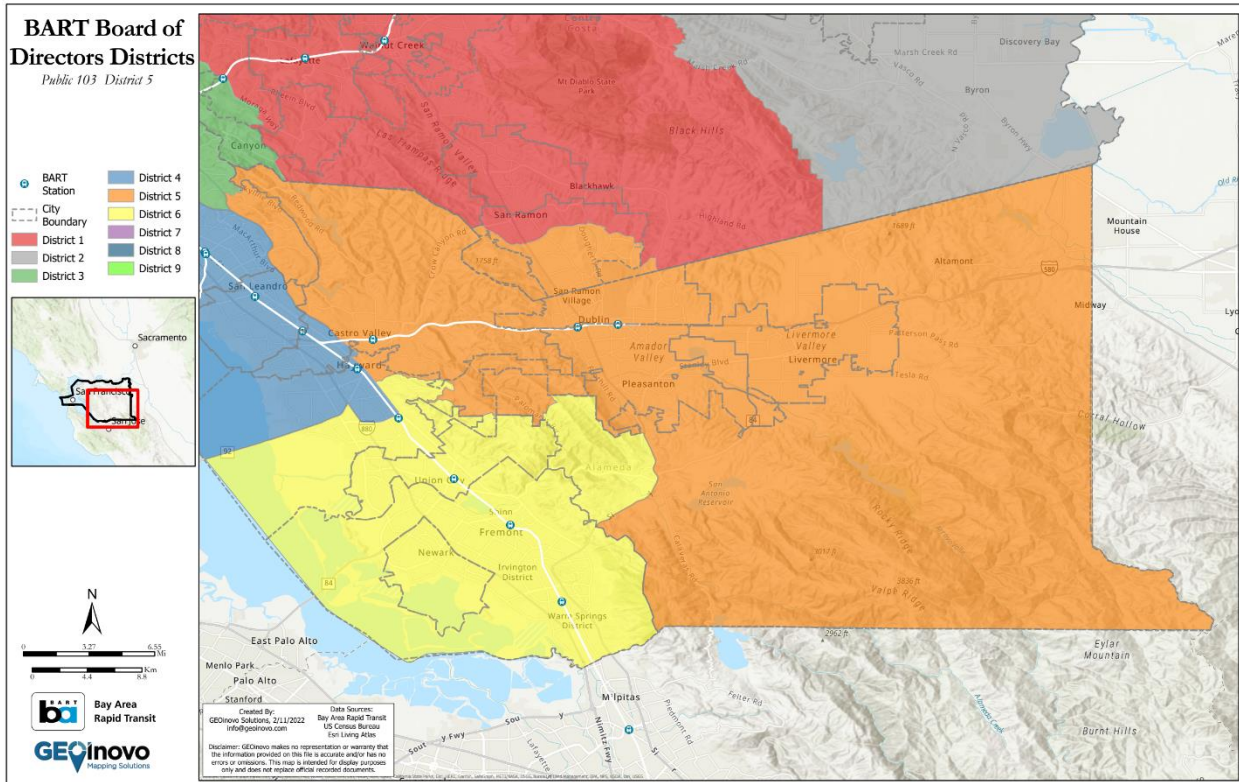
Population Changes to District 4

The following table was taken from file “BART_PopulationShift_Pub102-104_20220219”.

Pub 103, District 4: Pop. from Current Districts	Total Population	Percent Population
Total	413,997	100.0%
District 3	129,422	31.3%
District 4	199,607	48.2%
District 5	84,968	20.5%

Figure 8 District 4 maintains 48.2% of the current population, takes 31.1% from the current District 3, and 20.5% from District 5.

DISTRICT 5



District 5 is in Alameda and Contra Costa Counties and includes the western part of the City of Hayward – Walpert Ridge, populated areas North of Oakes Dr., Hahs Museum of History and Culture, Pleasanton, Dublin, San Ramon South of Bollinger Canyon Rd., Livermore, and unincorporated parts of Alameda County. Other places in District 5 include the Leona Canyon Regional Open space, Merritt College, Lake Chabot, the Oakland Zoo, Castro Valley, Fairview, Castlewood Country Club, and Altamont.

BART Stations included in District 5:

- Hayward (shared with District 4)
- Castro Valley
- West Dublin/Pleasanton
- Dublin/Pleasanton

CVAP Population Changes to District 5

The following table was taken from file “BART_CVAPShift_Pub102-104_20220219”.

Pub 103, District 5: Pop. from Current Districts	Total Population	Percent Population
Total	257,427	100.0%
District 1	30,754	11.9%
District 3	13,618	5.3%
District 4	97	0.0%
District 5	212,958	82.7%

Figure 9 District 5 maintains 82.7% of the current CVAP population, takes 11.9% from the current District 1, 5.3% from District 3, and 0.0% from the current District 4 (97 people).

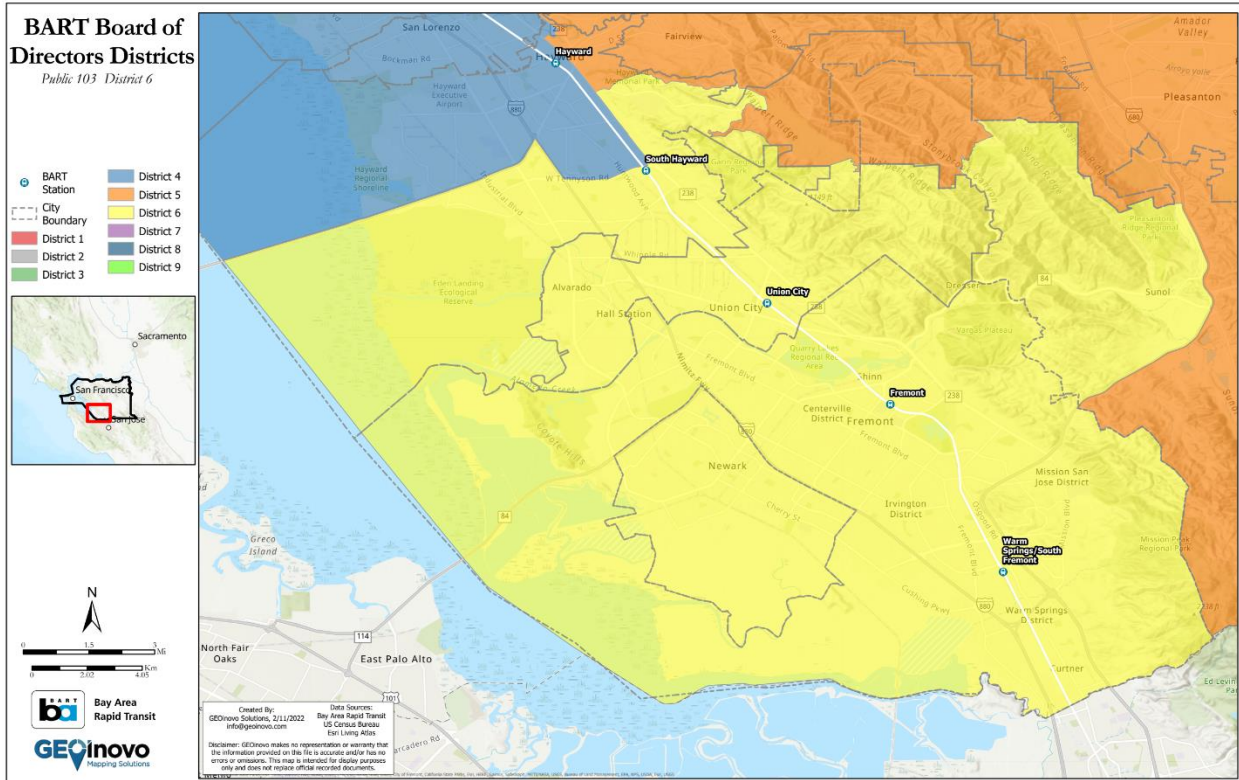
Population Changes to District 5

The following table was taken from file “BART_PopulationShift_Pub102-104_20220219”.

Pub 103, District 5: Pop. from Current Districts	Total Population	Percent Population
Total	414,070	100.0%
District 1	59,682	14.4%
District 3	17,551	4.2%
District 4	153	0.0%
District 5	336,684	81.3%

Figure 10 District 5 maintains 81.3% of the current population, takes 14.4% from the current District 1, 4.2% from the current District 3, and 0.0% from District 4 (153 people).

DISTRICT 6



District 6 is in Alameda County and includes the City of Fremont, Union City, the City of Newark, and the Southwestern part of the City of Hayward. Major landmarks include Eden Landing Ecological Reserve, Ohlone College, Mission San Jose District, Pleasanton Ridge Regional Park, and Sunol.

BART Stations included in District 6:

- Fremont
- South Hayward (shared with District 4)
- Union City
- Warm Springs/South Fremont

CVAP Population Changes to District 6

The following table was taken from file “BART_CVAPShift_Pub102-104_20220219”.

Pub 103, District 6: Pop. from Current Districts	Total Population	Percent Population
Total	257,200	100.0%
District 5	10,085	3.9%
District 6	247,115	96.1%

Figure 11 District 6 maintains 96.1% of the current CVAP population and takes 3.9% from the current District 5.

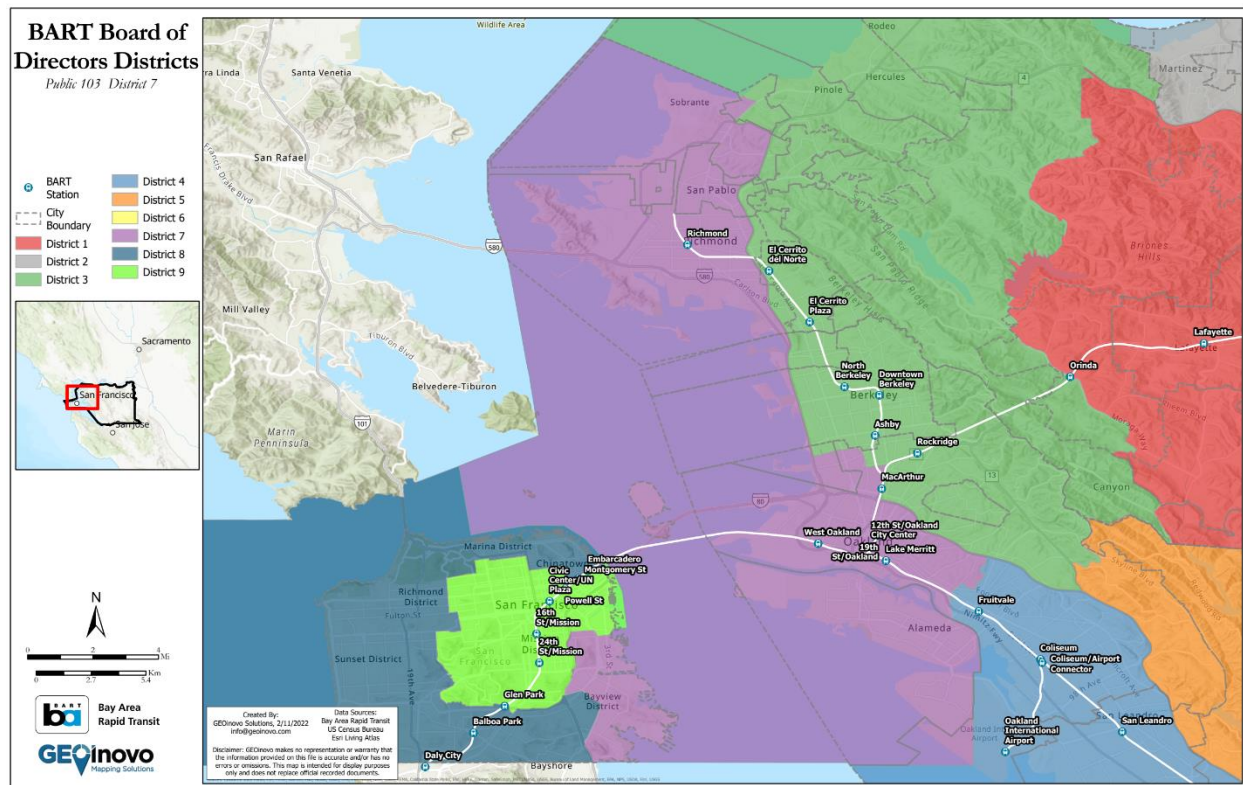
Population Changes to District 6

The following table was taken from file “BART_PopulationShift_Pub102-104_20220219”.

Pub 103, District 6: Pop. from Current Districts	Total Population	Percent Population
Total	414,140	100.0%
District 5	15,092	3.6%
District 6	399,048	96.4%

Figure 12 District 6 maintains 96.4% of the current population and takes 3.6% from the current District 5.

DISTRICT 7



District 7 is in Contra Costa, Alameda, and San Francisco Counties and includes the City of Richmond West of Route 80, San Pablo West of Route 80, North Richmond, the City of Albany West of Route 580, Berkeley West of Route 580, Emeryville except for the Northeast part which includes Expression College for Digital Arts, and West Oakland including Children’s Hospital Oakland, Alta Bates Summit Medical Center, Lakeside Park. In addition, District 7 includes the City of Alameda, and the Bayview and Potrero Districts of San Francisco.

BART Stations included in District 7:

- El Cerrito del Norte (shared with District 3)
- West Oakland

- 12th St/Oakland City Center
- Lake Merritt
- MacArthur (shared with District 3)
- Richmond
- 19th St/Oakland

CVAP Population Changes to District 7

The following table was taken from file “BART_CVAPShift_Pub102-104_20220219”.

Pub 103, District 7: Pop. from Current Districts	Total Population	Percent Population
Total	254,916	100.0%
District 4	120,904	47.4%
District 7	125,284	49.1%
District 9	8,728	3.4%

Figure 13 District 7 maintains 49.1% of the current CVAP population, takes 47.4% from the current District 4, and 3.4% from the current District 9.

Population Changes to District 7

The following table was taken from file “BART_PopulationShift_Pub102-104_20220219”.

Pub 103, District 7: Pop. from Current Districts	Total Population	Percent Population
Total	414,049	100.0%
District 4	173,080	41.8%
District 7	228,445	55.2%
District 9	12,524	3.0%

Figure 14 District 7 maintains 55.2% of the current population, takes 41.8% from the current District 4, and 3.0% from the current District 9.

Figure 15 District 8 maintains 81.0% of the current CVAP population, takes 15.5% from the current District 9, and 3.5% from the current District 7.

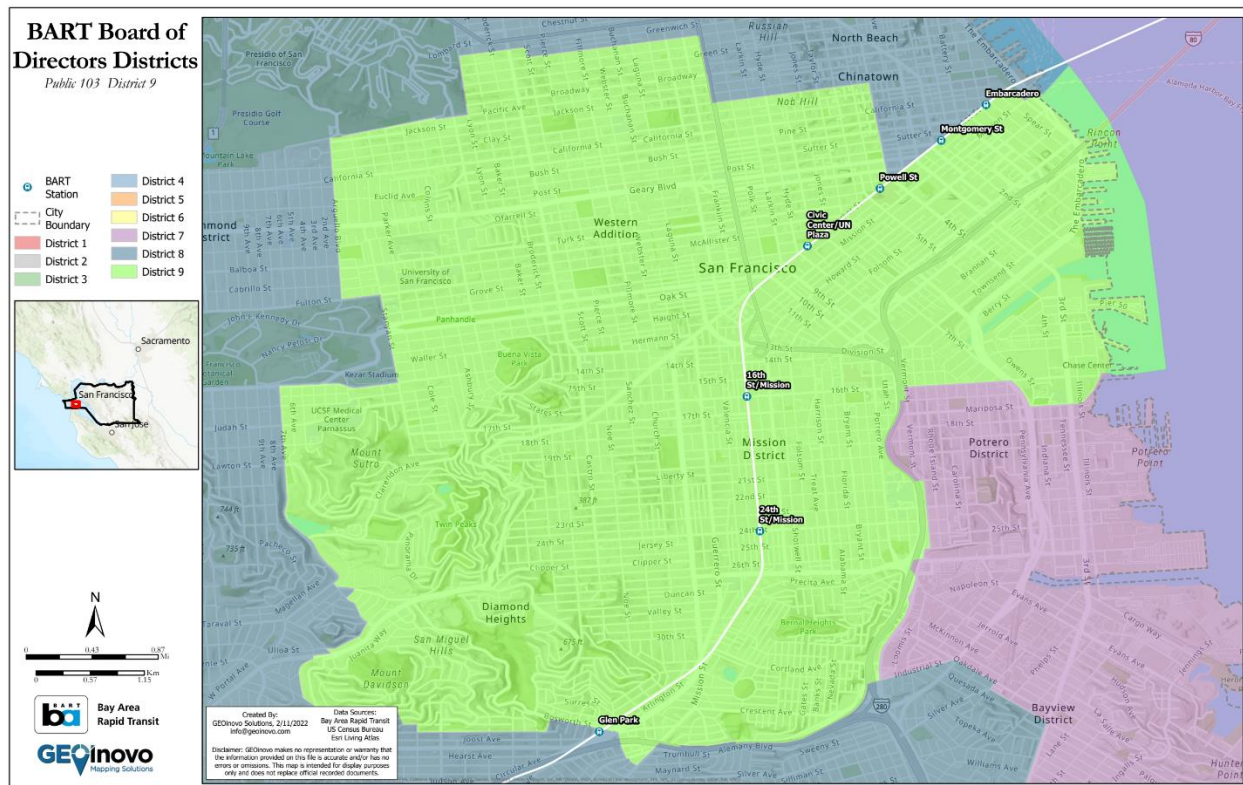
Population Changes to District 8

The following table was taken from file “BART_PopulationShift_Pub102-104_20220219”.

Pub 103, District 8: Pop. from Current Districts	Total Population	Percent Population
Total	414,049	100.0%
District 7	17,362	4.2%
District 8	330,255	79.8%
District 9	66,432	16.0%

Figure 16 District 8 maintains 79.8% of the current population, takes 16.0% from the current District 9, and 4.2% from District 7.

DISTRICT 9



District 9 is in San Francisco County and includes the following neighborhoods and points of interest in San Francisco: Western Addition, Twin Peaks, Diamond Heights, Glen Canyon Park, St Mary’s Recreation Center, Bernal Heights Park, Union Square, Mission District, Potrero Center, Pier 50, and the Salesforce Transit Center.

BART Stations included in District 9:

- Montgomery St (shared with District 8)
- Embarcadero (shared with District 8)
- Powell St (shared with District 8)
- Civic Center/UN Plaza
- 16th St/Mission
- 24th St/Mission
- Glen Park (shared with District 8)

CVAP Population Changes to District 9

The following table was taken from file “BART_CVAPShift_Pub102-104_20220219”.

Pub 103, District 9: Pop. from Current Districts	Total Population	Percent Population
Total	302,494	100.0%
District 7	20,198	6.7%
District 8	42,687	14.1%
District 9	239,609	79.2%

Figure 17 District 9 maintains 79.2% of the current CVAP population, takes 14.1% from the current District 8, and 6.7% from the current District 7.

Population Changes to District 9

The following table was taken from file “BART_PopulationShift_Pub102-104_20220219”.

Pub 103, District 9: Pop. from Current Districts	Total Population	Percent Population
Total	414,084	100.0%
District 7	35,448	8.6%
District 8	53,435	12.9%
District 9	325,201	78.5%

Figure 18 District 9 maintains 78.5% of the current population, takes 12.9% from the current District 8, and 8.6% from District 7.