

BART Warm Springs Extension

Construction Details

Summary of Activity

Construction of the Tennis Center parking lot will begin in late September.

Estimated Start Date

September 18

Estimated Duration

3 Months

Impacts

- Loss of approximately 10 parking spaces at northeastern portion of parking during construction.
- Contractors and construction equipment will enter the work site via the Tennis Center parking lot entrance on Stevenson Blvd.
- Increased noise from construction equipment including jackhammers.
- Additional traffic in the Tennis Center area.

For More Information

Call:

(510) 476-3900

Email:

bartwarmsspringsextension@bart.gov

Visit:

www.bart.gov/wsx

Construction Notification #03

Tennis Center Parking Lot Construction Work to Begin Late September

September 18, 2009

The San Francisco Bay Area Rapid Transit District (BART) has begun preparation for construction of the Fremont Central Park Subway. BART will begin work to construct a new 40 space parking lot at the Fremont Central Park Tennis Center.

Preliminary work that will start this week will include installing construction fencing, removing curbs and protecting trees in the work area. Additional work that will take place over the next three months will include grading, paving and landscaping for the new parking lot.

Effective September 28, 2009, approximately 10 parking spaces in the northeastern portion of the Tennis Center parking lot will be out of service during construction.

Construction workers and equipment will access the worksite through the Tennis Center parking lot entrance on Stevenson Boulevard. Please use caution when entering and exiting the Tennis Center and watch for construction equipment.

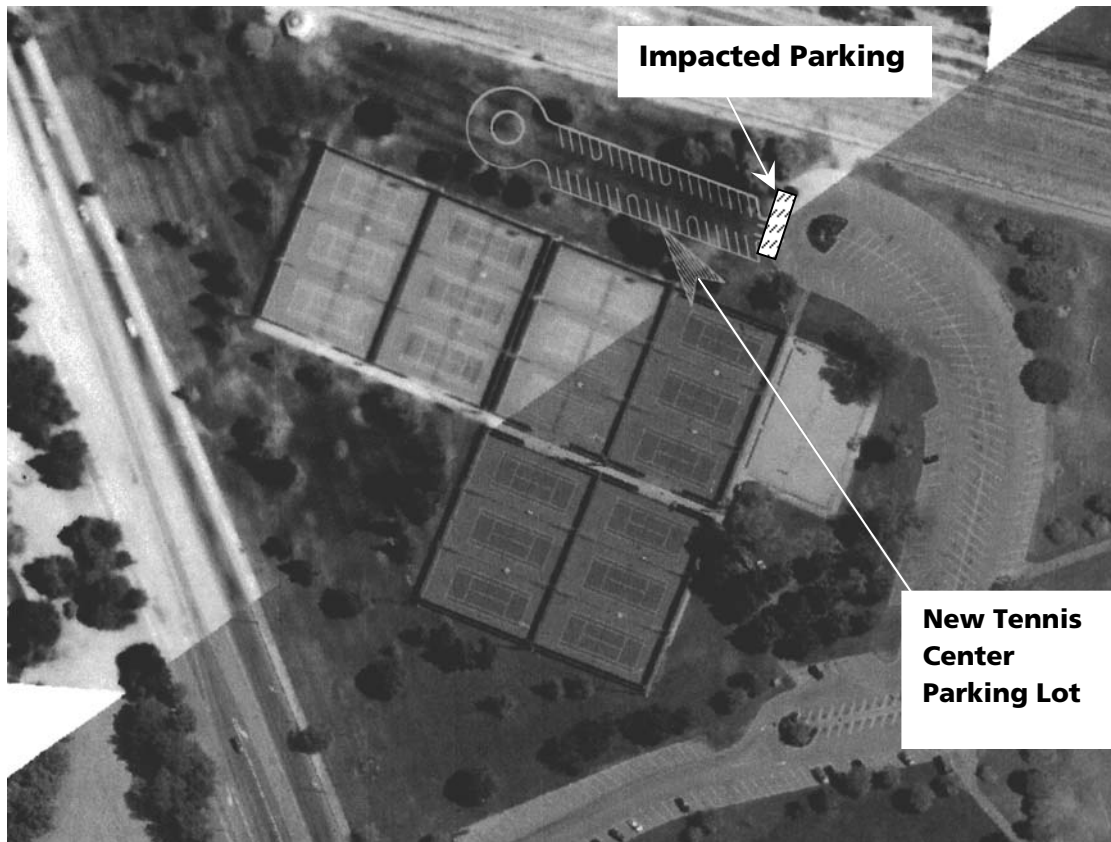
If you have questions regarding this activity, please contact our project information line at 510-476-3900 or email bartwarmsspringsextension@bart.gov.

General Construction Information

Anticipated general work hours outside Fremont Central Park are 7 a.m. to 7 p.m. Monday through Friday, with some work on Saturday as necessary. Work hours within Fremont Central Park are 7 a.m. to 10 p.m. Monday through Friday, and 8 a.m. to 6 p.m. on Saturday.



Tennis Center Parking Lot Construction Area



**Warm Springs Extension
Fremont Central Park Subway**

P.O. Box 12688 MS LKS-21
Oakland, CA 94604

**Construction Notification #3
Tennis Center Parking Lot Construction
Work To Begin late September**