

**NOTICE OF MEETING AND AGENDA**  
**BART Bicycle Advisory Task Force (BBATF)**

June 6, 2022  
6:00 p.m. – 8:00 p.m.

BBATF Members: Jon Spangler (Chairperson), Rick Goldman (Vice Chairperson), Jianhan Wang, Jeremiah Maller, Phoenix Mangrum, Bill Pinkham, Tyler Morris.

Chairperson Jon Spangler has called a meeting of the BART Bicycle Advisory Task Force on June 6, 2022, at 6:00 p.m.

Please note, pursuant to all necessary findings having been made by the Board of Directors of the San Francisco Bay Area Rapid Transit District (for itself as well as all subordinate legislative bodies) to continue remote public meetings in the manner contemplated under urgency legislation Assembly Bill No. 361, public participation for this meeting will be via teleconference only.

To Join the Zoom Meeting Online, visit: <https://us06web.zoom.us/j/83347711775>

To Join the Zoom Meeting via Telephone (audio only), call: +1 720 707 2699 US (Denver)

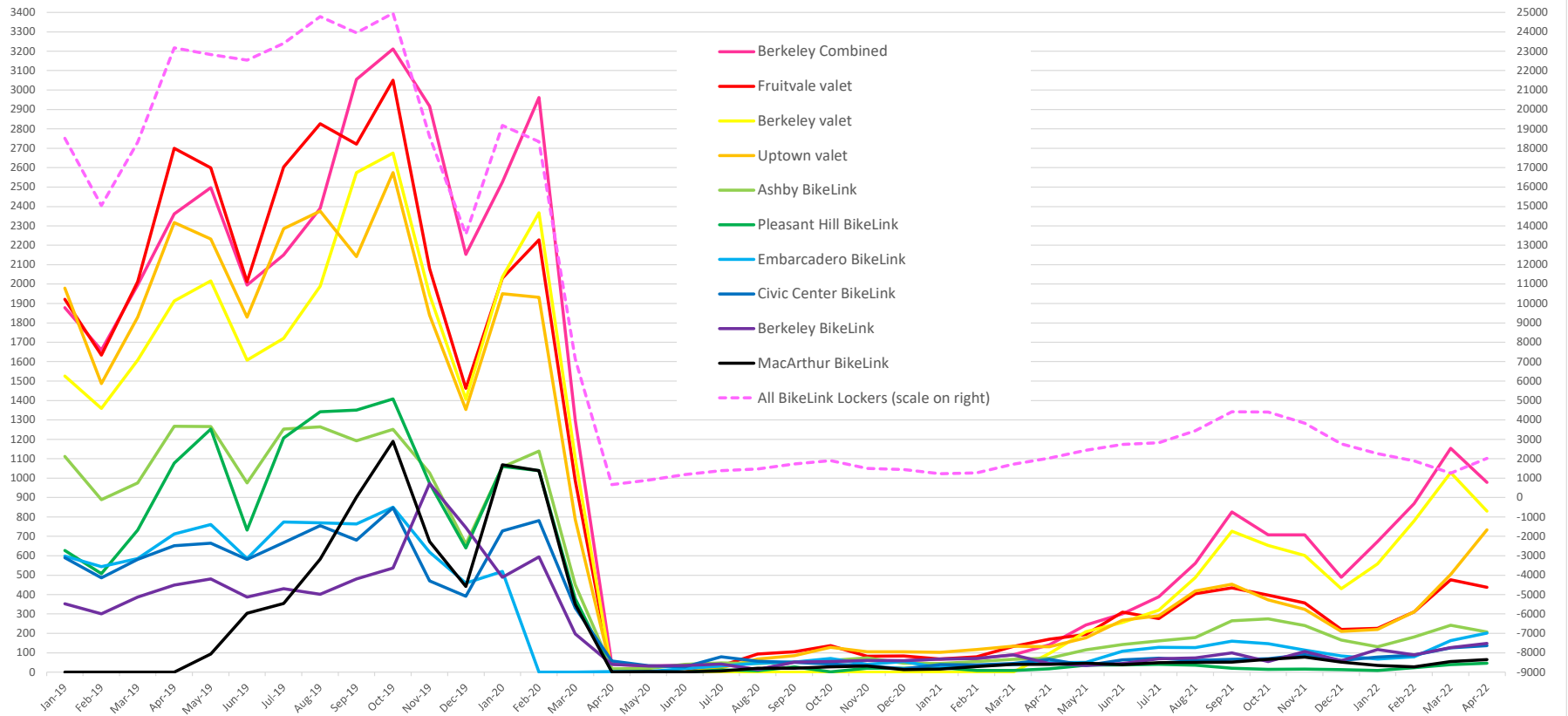
Meeting ID: 833 4771 1775

**AGENDA**

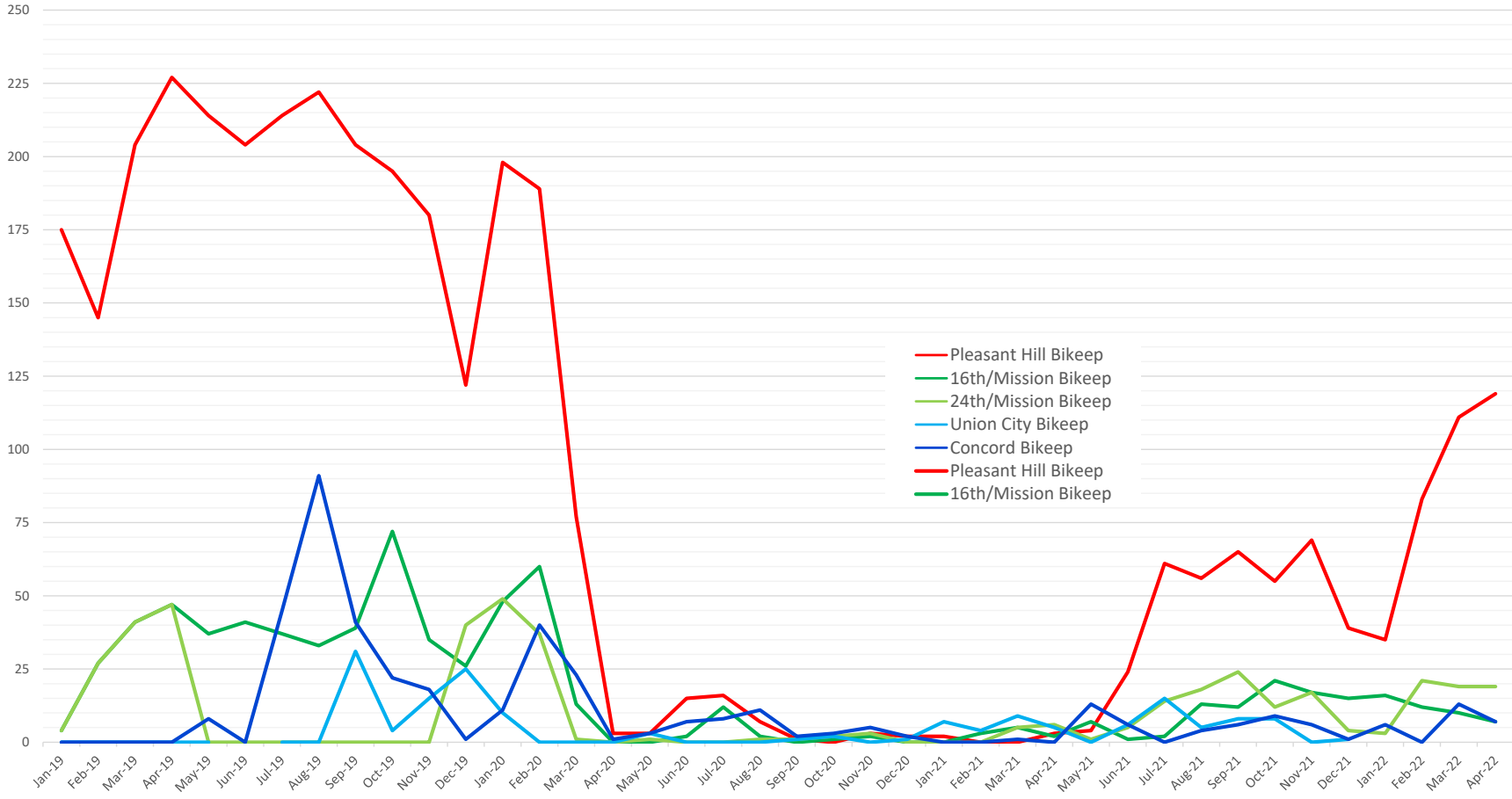
1. Self-introductions of members, staff, and guests: All. (*For Information*) 5 min.
2. General discussion and public comment: Jon Spangler. (*For Information*) 5 min.
3. Approval of May and April 2022 minutes: Jon Spangler. (*For Action*) 5 min.
4. Warm Springs/South Fremont BART Station West Access Bridge & Plaza Project: David Silva, BART. (*For Information*) 20 min.
5. Irvington Bike Station: David Silva, BART. (*For Information*) 20 min.
6. Link 21: Sadie Graham, BART. (*For Information*) 20 min.
7. BART Bicycle Advisory Committee Application—Francisco Munoz: Heath Maddox, BART. (*For Action*) 10 min.
8. BART to Silicon Valley II: Jon Spangler. (*For Action: letter to BART Board*) 10 min.
9. BART Elevators Upgrade & Replacement: Jon Spangler. (*For Action: letter to BART Board*) 10 min.
10. BBATF Member Local Updates: All (*For Information*) 5 min.
11. Recording BBATF Meetings: Jon Spangler. (*For Action*) 5 min.

BART provides service/accommodations upon request to persons with disabilities and individuals who are limited English proficient who wish to address Committee matters. A request must be made between one and five days in advance of Board/Committee meetings, depending on the service requested. Please contact the Office of the District Secretary at (510) 464-6083 for information.

## Monthly Volumes at BART Bike Stations & BikeLink eLockers Jan 2019-April 2022



## Monthly Volumes at BART Bikeep Smart Racks Jan 2019-April 2022



## April 2022 BART Bicycle Advisory Task Force Minutes

1. Self-Introductions of members, staff, and guests
2. General Discussion
3. Approval of minutes. Approved 3-0
4. Election of Secretary: Deferred to Next Meeting
5. Approval of BBATF Member Application for Rick Goldman as at-large member
  - a. Motion Approved unanimously
6. VTA's BART Silicon Valley Phase 2. Bernice Alaniz and Erica Roecks, VTA
  - a. Phase 1: 10-mile extension, 2-stations, opened in 2020
  - b. Phase II: 6 miles, 4-stations.
  - c. Santa Clara County not part of the BART district.
  - d. Santa Clara County pays cost to build, BART will operate and maintain
  - e. Better Bike Plan 2025 to get to BART stations
  - f. 4 Contract Packages (Systems, Tunnel & Trackwork, Newhall Yard and Santa Clara Station, and 3 other stations.
7. Station Access
  - a. Using BART station access hierarchies (walk, bicycle, transit, pick-up/drop-off, parking)
  - b. Expected Ridership in 2040. Downtown biggest (27,900) to 28<sup>th</sup> St. (6,700).
  - c. Bike Parking Spaces at each station (75% lockers or bike station spaces; 25% racks)
    - i. 28<sup>th</sup> St. 250
    - ii. Downtown: 270
    - iii. Diridon: 190
    - iv. Santa Clara: 240
  - d. 28<sup>th</sup> Street: could accommodate TOD in the future.
    - i. Adding stoplights on 28<sup>th</sup> Street
    - ii. Build sidewalks on both sides
    - iii. Raised mid-block crossing.
    - iv. Class 1 and Class 2 bike parking is planned.
    - v. Stairs channels on preferred bike routes
  - e. Downtown San Jose station
    - i. Multiple bike lanes around the station
    - ii. Paseo behind primary station entrance
    - iii. Widen sidewalks near BART entrance
    - iv. High Visibility crosswalks
    - v. No pick-up/drop-off zone except ADA
  - f. Diridon Station/Google West
    - i. Google West building bike lanes
    - ii. Updated traffic signal timing to be provided for pedestrian priority
    - iii. No parking, but do provide loading zone
    - iv. Class 1 (longer term, secure) and Class 2 (simple racks) bike parking
  - g. Santa Clara Station
    - i. Next to CalTrain station
    - ii. Existing Pedestrian Undercrossing
    - iii. Many proposed bike lanes

- iv. New roadway (Champions Way) to include a two-way Class IV bikeway.
    - v. Bike lanes on Brokaw.
    - vi. Class 1 and Class 2 bike parking, and a bike station.
  - h. Vertical Circulation
    - i. Preferred bike routes will include stair channels (unless preferred route is to use the elevator).
    - i. myVTA to get more info ([www.vta.org/bart](http://www.vta.org/bart)).
- 8. Q and A:
  - a. Bike Lanes around 28<sup>th</sup> Street are not there yet. Will they be built in time? BART thinks so.
  - b. Look at Decrease height of steps: Not possible in small footprint of the station
  - c. Space for bike and scooter share at station: Will be accommodated.
  - d. Cost: somewhere between \$7 billion (SCCTA Est) and \$9 billion (max fed funding).
  - e. Why no entrance on both sides of Santa Clara Street? Due to tunnel design (stacked configuration), and safety/security concerns.
- 9. BBATF Member Local Updates
  - a. Bill Pinkham (CC): Richmond Parkway needs a bridge over 23rd street/Carlson Blvd. There is a design but need to find money. Safe Routes to Transit? TDA?
  - b. Robert Raburn: Caltrans working on San Pablo corridor
  - c. Tyler Morris (SF): SFMTA ready to launch multi-modal study as part of a new bicycle master plan.
  - d. Jon Spangler (AL). Noticed some bike access issues to San Leandro BART station.
  - e. Robert Raburn: Project in Oakland: 14<sup>th</sup> street Bike Project. West Oakland to Lake Merritt. [www.oaklandca.gov/projects/14th-street](http://www.oaklandca.gov/projects/14th-street)
- 10. Next Meeting May 9<sup>th</sup> 6-8pm



# Warm Springs/South Fremont BART Station West Access Bridge & Plaza Project





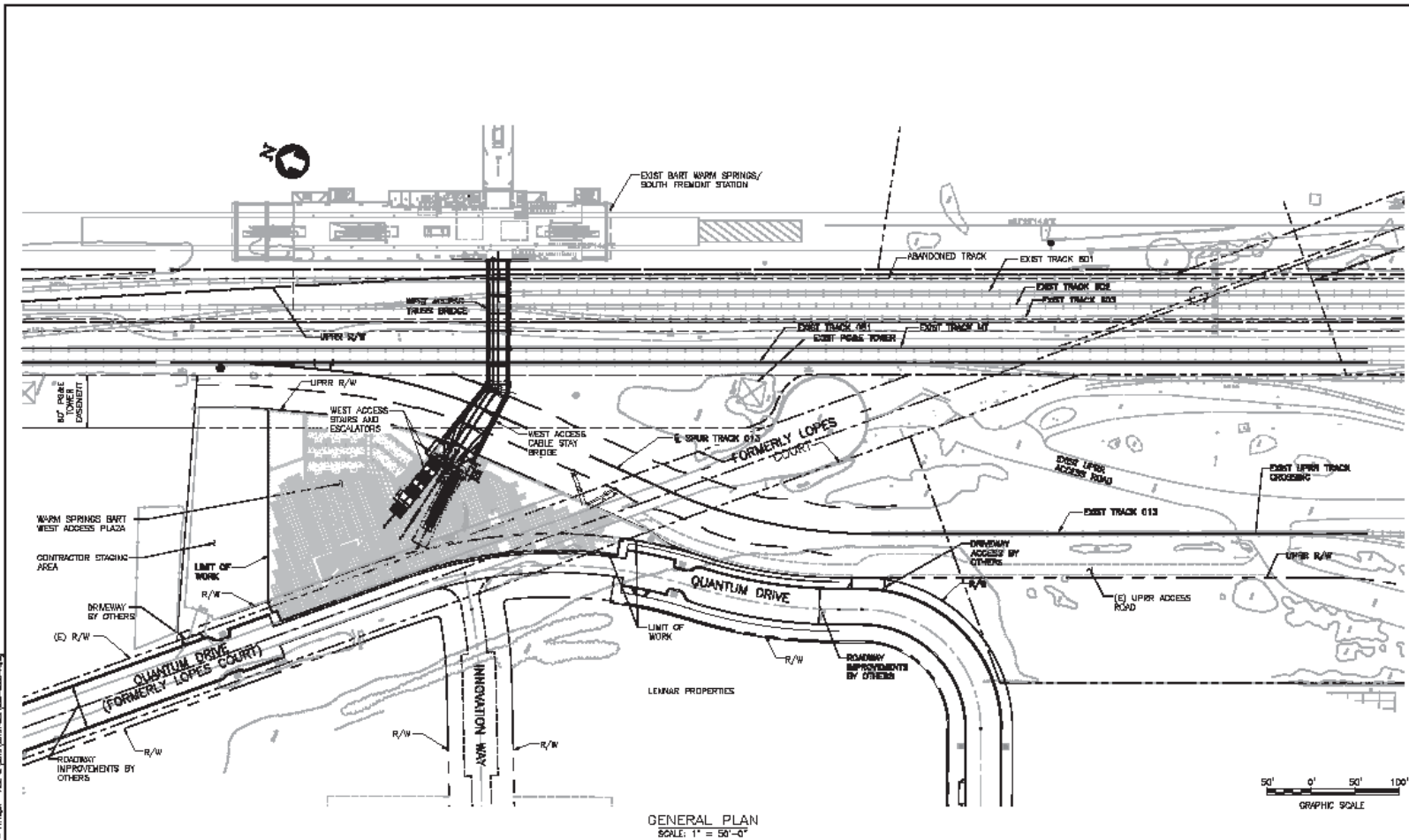
# Location





# West Access Bridge & Plaza Project

## Site Plan



GENERAL PLAN  
SCALE: 1" = 50'-0"

No.	DATE	REVISION	BY	APPROV.

SEAN CAROLINA ARCHITECTS INC  
ARCHITECTS AND ENGINEERS  
1000 CALIFORNIA STREET, SUITE 1000  
SAN FRANCISCO, CA 94109  
TEL: 415.774.4444 FAX: 415.774.4444  
WWW.SCAROLINAARCHITECTS.COM



**CITY OF Fremont**  
APPROVED - PRINCIPAL ENGINEER  
*[Signature]*

WARM SPRINGS BART WEST ACCESS BRIDGE AND PLAZA  
**GENERAL PLAN**  
**PUBLIC WORKS DEPARTMENT**  
DESIGNED BY: J. BOGEMAR  
CHECKED BY: RWB  
DATE: 05/31/17  
RECOMMENDED - PROJECT MANAGER  
*[Signature]*  
DATE: 05/31/17

CITY PROJECT: PWC 8804  
FEDERAL PROJECT: N/A  
DESIGNED BY: J. BOGEMAR  
CHECKED BY: RWB  
DATE: 05/31/17

SCALE: AS NOTED  
DRAWING: **G008**  
NOTE: VERIFY SCALE. BAR IS ONE INCH ON ORIGINAL DRAWING. ADJUST SCALES ACCORDINGLY IF BAR IS NOT ONE INCH.  
SHEET 008 OF 351





# West Access Bridge & Plaza Project

## *Aerial Photo*





# West Access Bridge & Plaza Project

## *City Of Fremont Project*

5

- ▼ COF administers the construction project.
- ▼ BART provides oversight & final acceptance.
- ▼ City of Fremont owns and maintains the Plaza.
- ▼ BART owns and maintains the BART infrastructure.





# West Access Bridge & Plaza Project

## *Bike Accessibility features*

6

- ▼ **Bike Channels on the Staircase**
- ▼ **New elevator (8'-5" x 5'-0" with pass-through configuration).**





# West Access Bridge & Plaza Project

*Photos from the City plaza level*





# West Access Bridge & Plaza Project

*Photo – Elevator from Plaza Level to the Bridge*





# West Access Bridge & Plaza Project

*Photo – Main Staircase w/ Bike Channels*





# West Access Bridge & Plaza Project

*Photo – Left Side Bike Channel on the Staircase*





# West Access Bridge & Plaza Project

*Photo – Bridge Level*







# West Access Bridge & Plaza Project

*Photo – Entrance to the Station*





# West Access Bridge & Plaza Project

*Photo – Southside Fare Gates*





# West Access Bridge & Plaza Project

*Photos – South Staircase with Bike Channels*





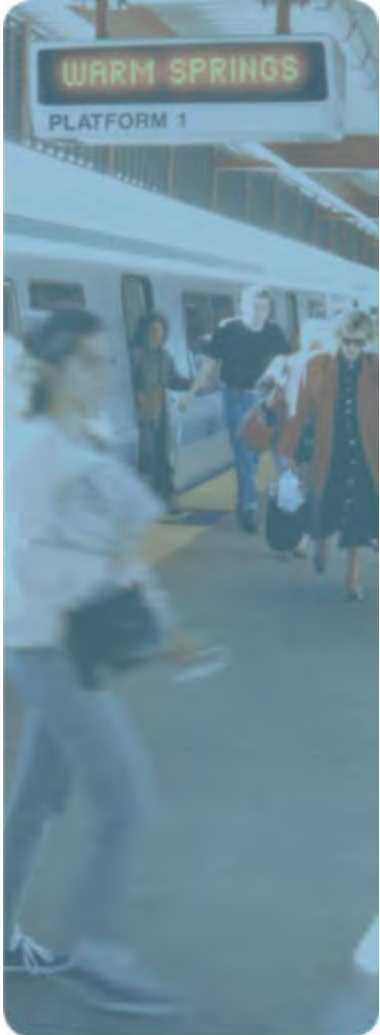
# West Access Bridge & Plaza Project

*Photo – South Staircase Looking Up*



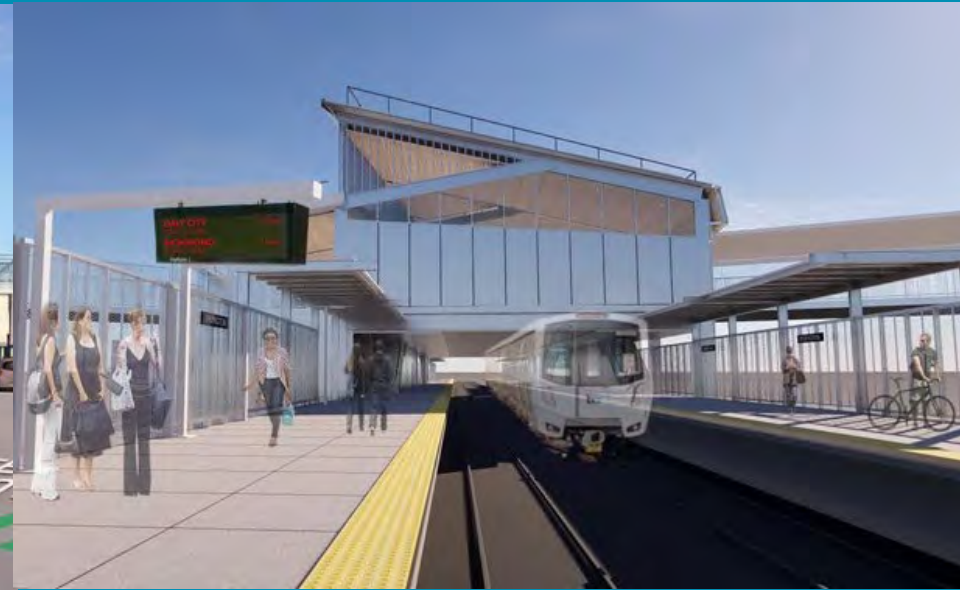


# Q & A



# Warm Springs Extension Irvington Station, Fremont, CA

Bicycle Task Force Update  
June 6, 2022

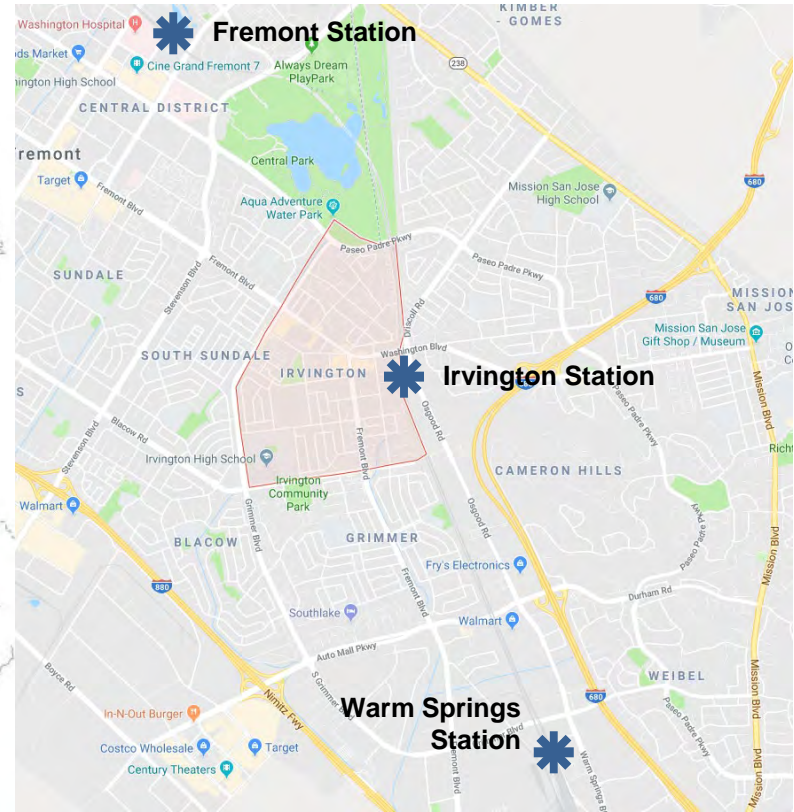


Key Partners:



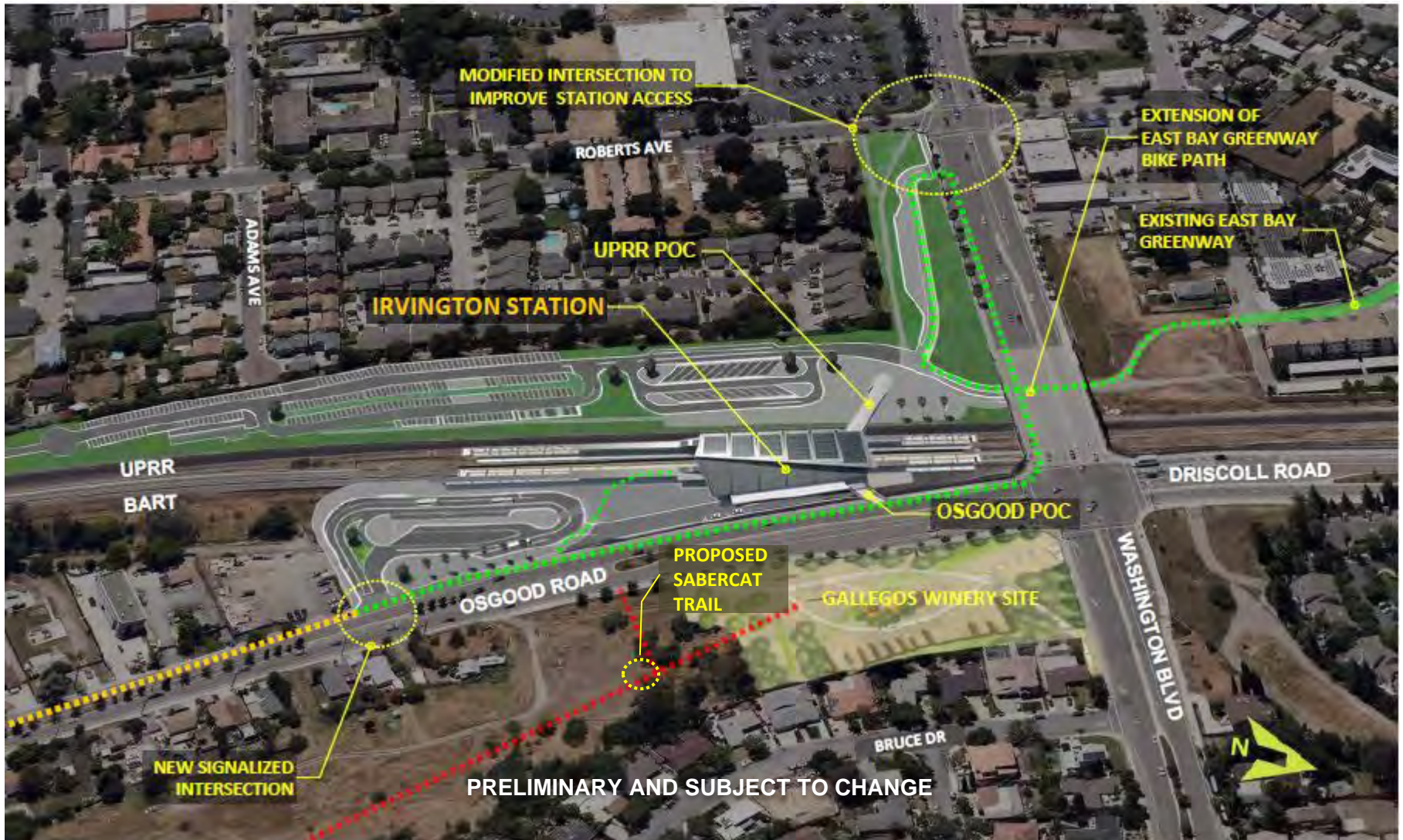


# WSX Irvington BART Station Station Location





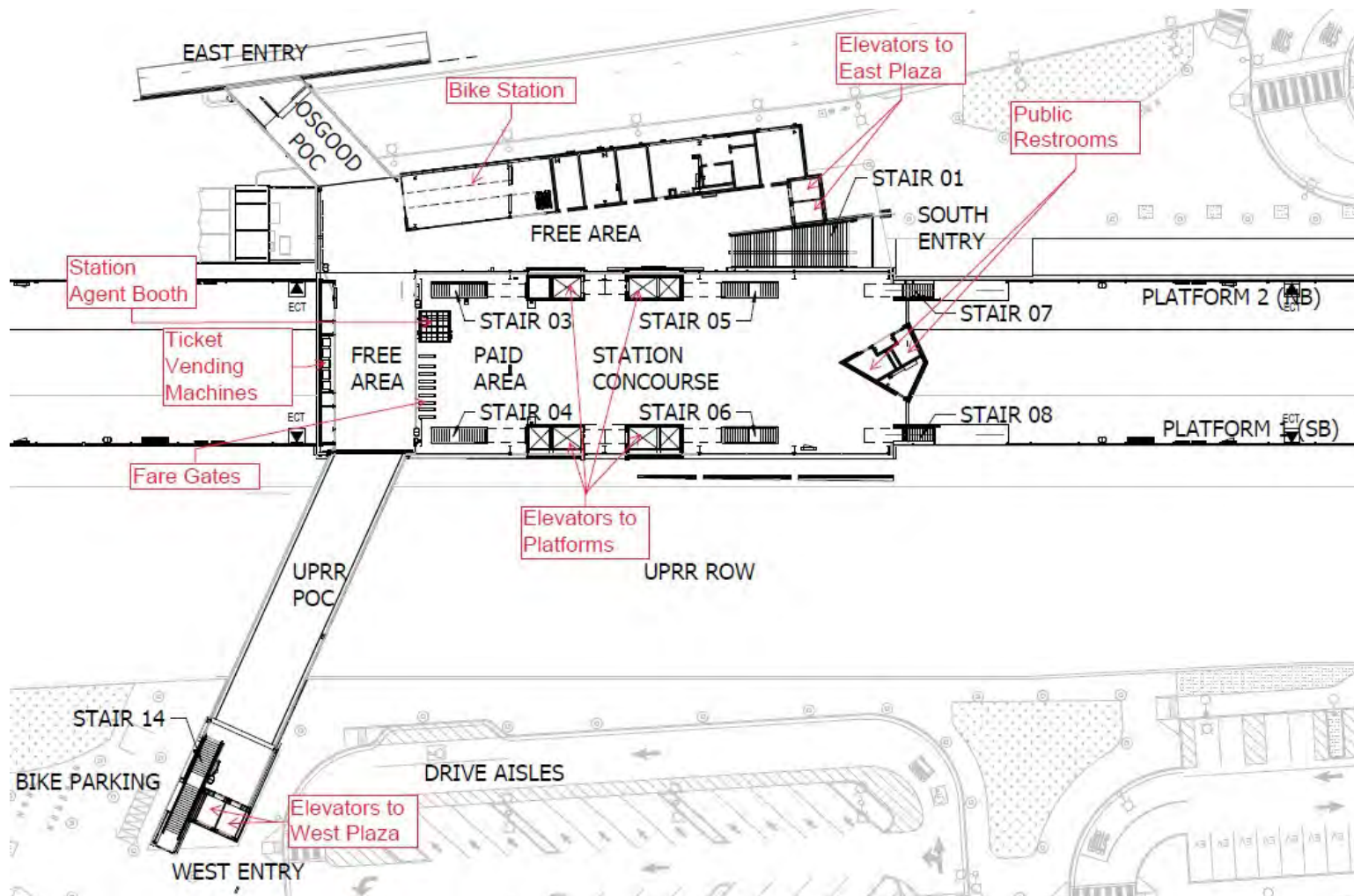
# WSX Irvington BART Station Station Site Layout







# WSX Irvington BART Station Station Layout



PRELIMINARY AND SUBJECT TO CHANGE



WSX Irvington BART Station

# Video Rendering – East Entrance





WSX Irvington BART Station

# Video Rendering – West Entrance





Irvington BART Station

# Bike Access – West



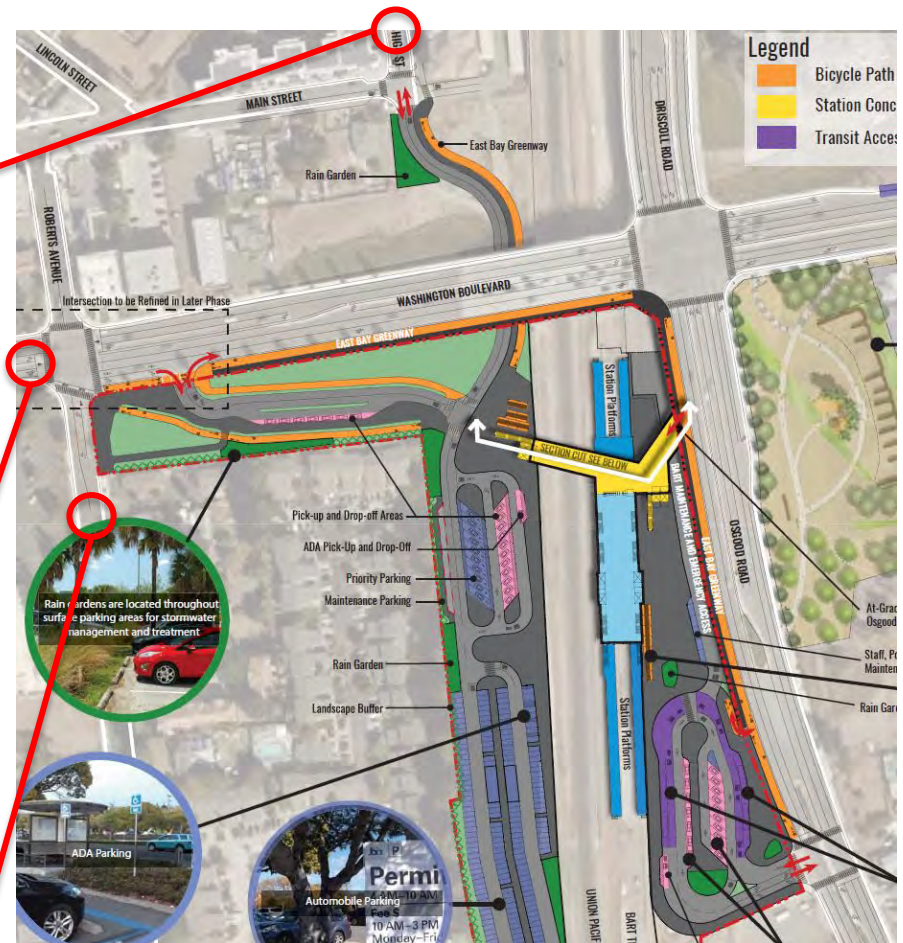
High Street – Class III Bike Route; Main Street Similar



Washington Blvd Class II Buffered Bike Lanes (Future Class IV Separated Bikeway)



Roberts Ave – Class III Bike Route

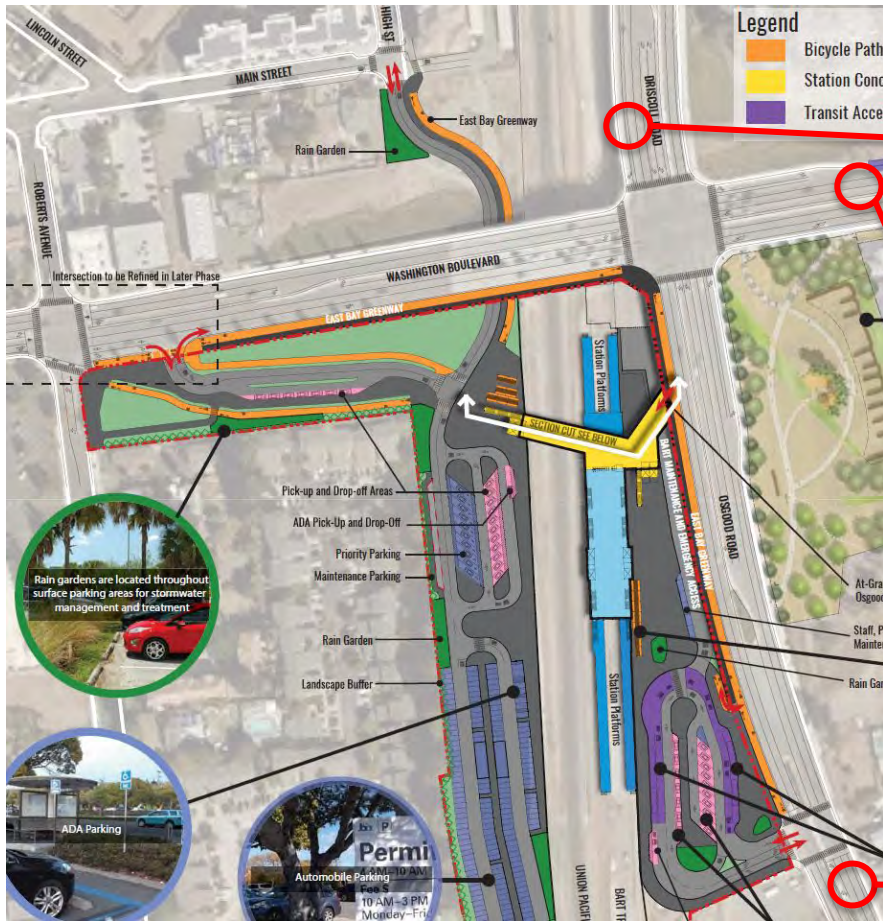


Bike Routes are shown in orange



# Irvington BART Station

## Bike Access – East



Bike Routes are shown in orange



Driscoll Class II Bike Lanes (Future Buffered Bike Lanes)



Washington Blvd Class II Buffered Bike Lanes (Future Upgrade to Class IV Separated Bikeway)

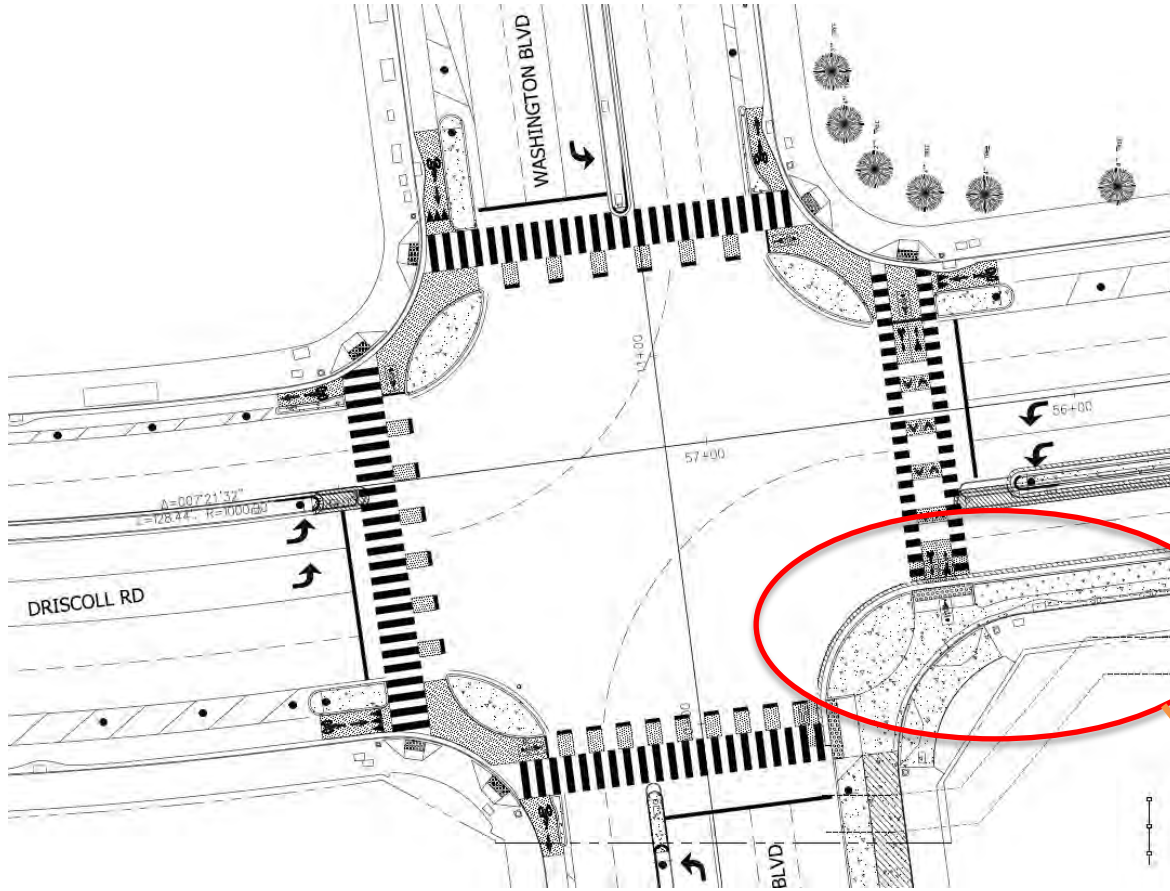


Osgood Rd Class II Bike Lanes (Future EBGW on SB Osgood)



Irvington BART Station

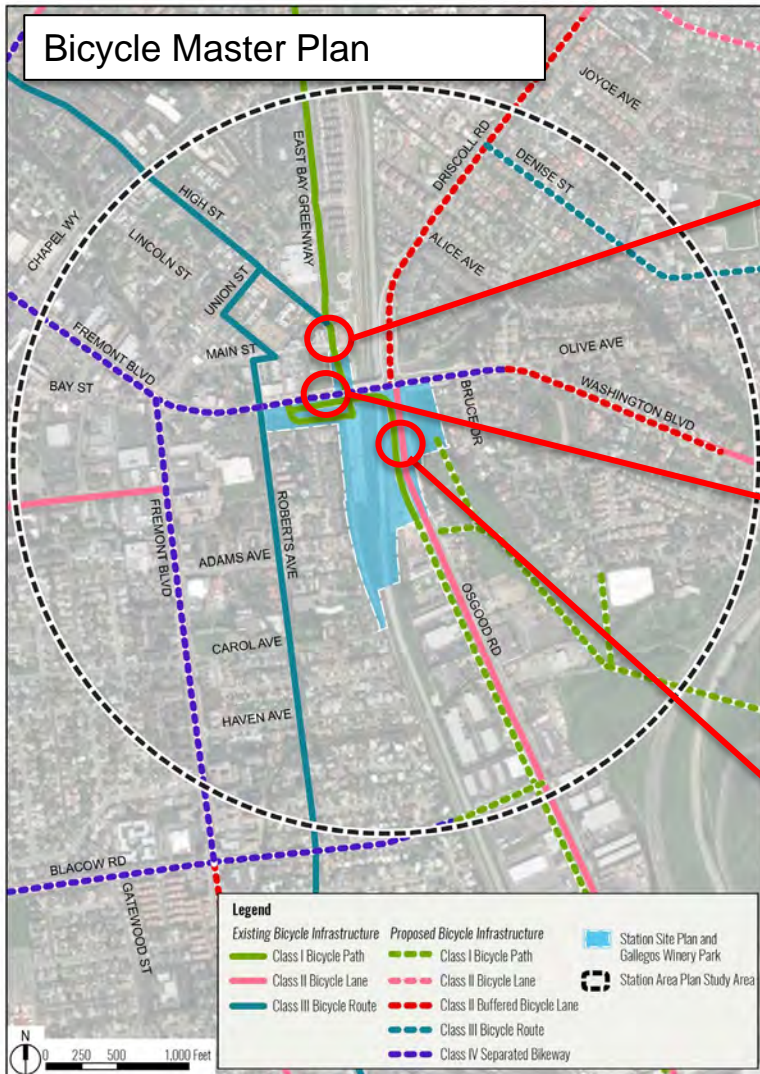
# Washington & Osgood Intersection Improvements by City of Fremont





# Irvington BART Station

## Bikeway Modifications Within Project Scope





Irvington BART Station

# Bike Access – Within Station



Osgood Bridge



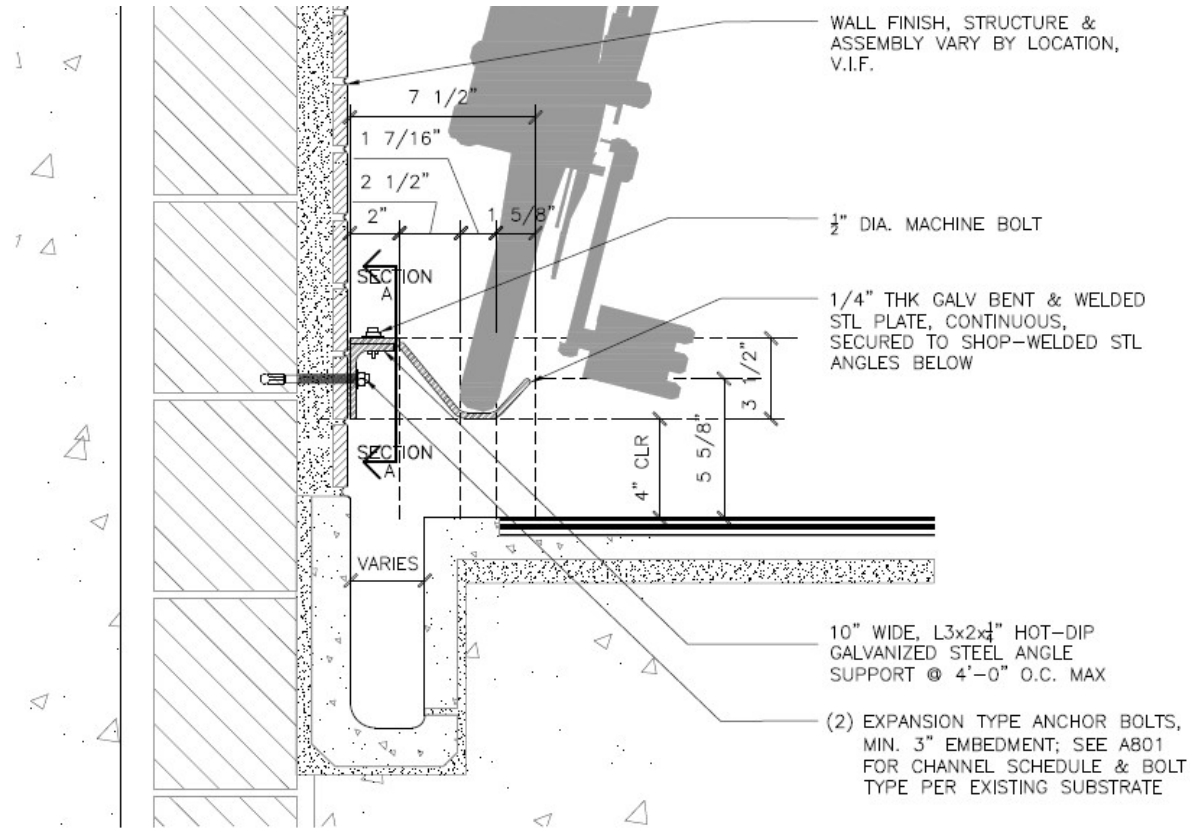


Irvington BART Station

# Bike Access – Within Station



Photo is of bike channel at Warm Springs Station. Actual bike channel for Irvington will follow latest design.



Bike Channels at Northernmost Platform Stairs and Plaza Stairs



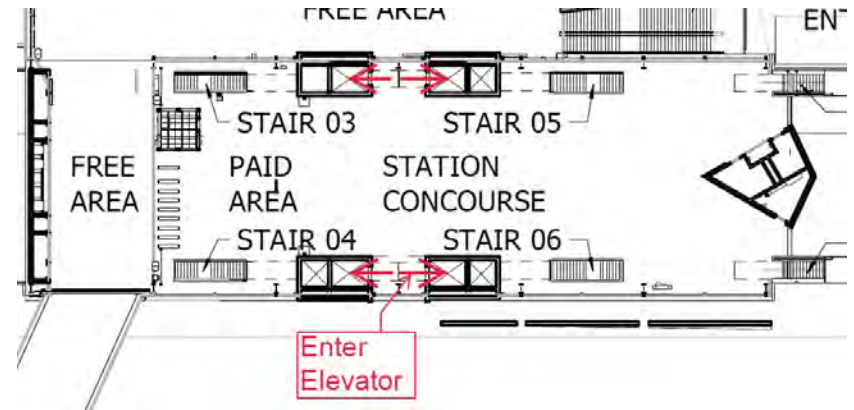
Irvington BART Station

# Bike Access – Within Station

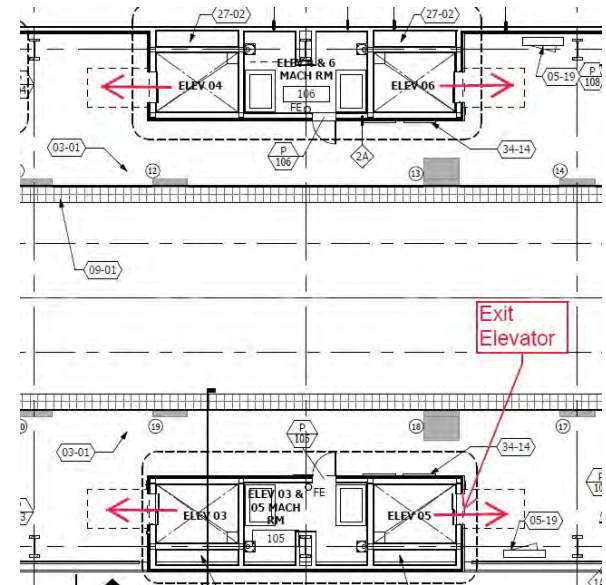


## Redundant Elevators

- Dimensions: 8'-7" Long x 5'-9" Wide (Easily Accommodates 2 cargo bikes)
- Configuration: Pass-Through



## Concourse Level

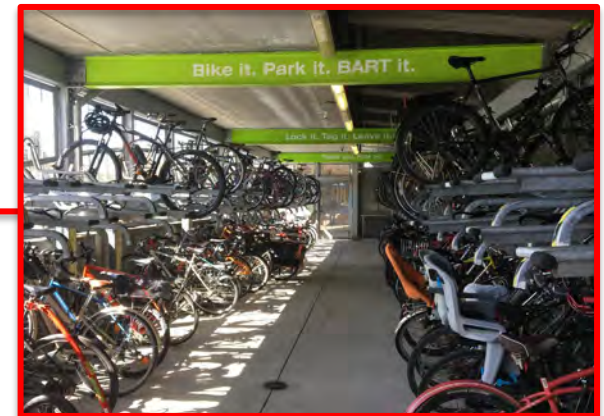
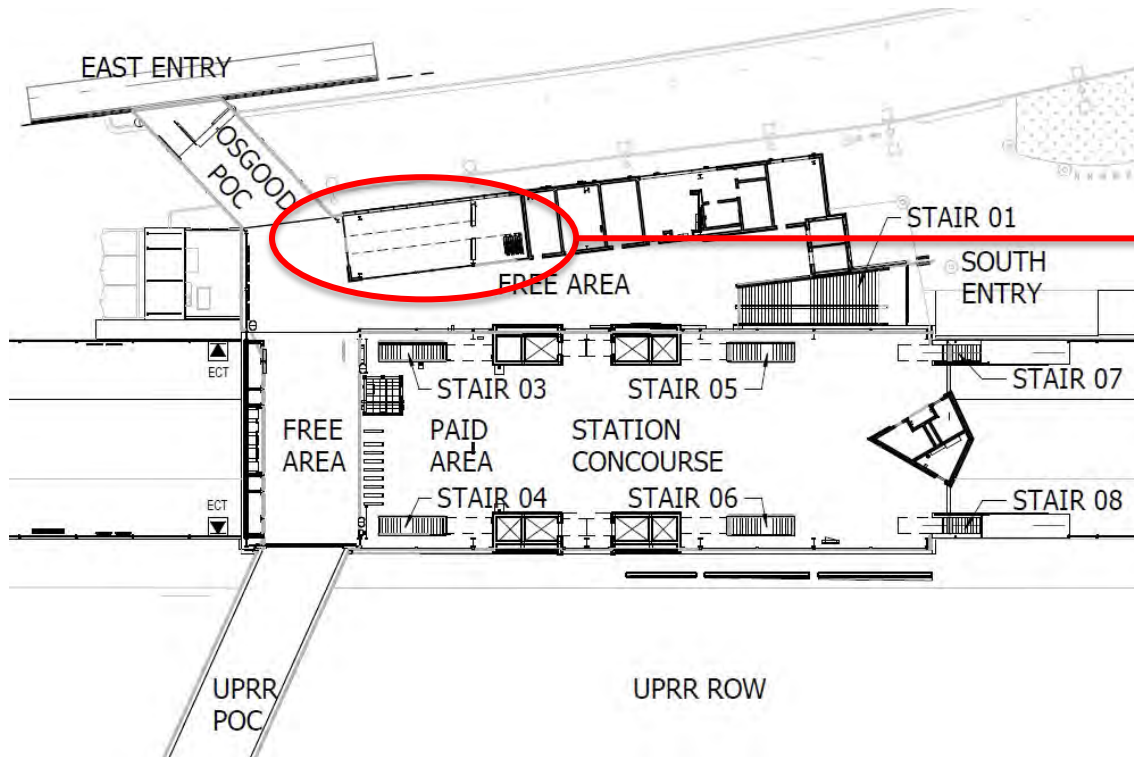


## Platform Level



Irvington BART Station

# Bike Parking – Concourse Level

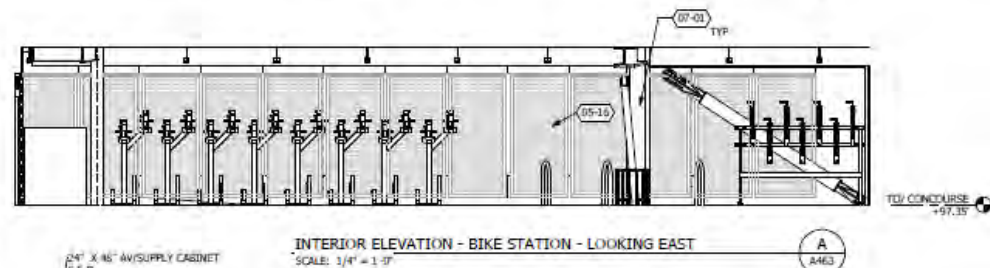
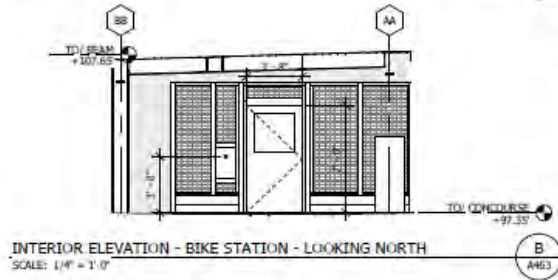
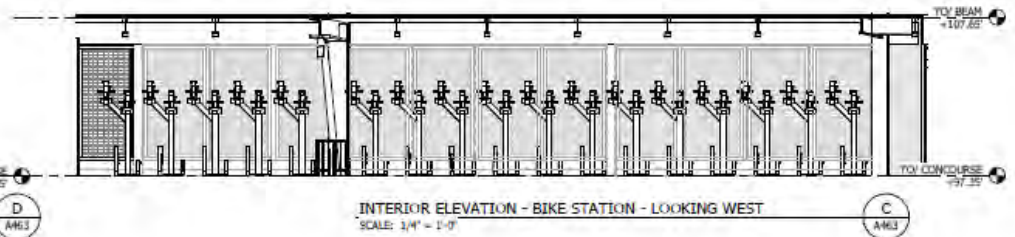
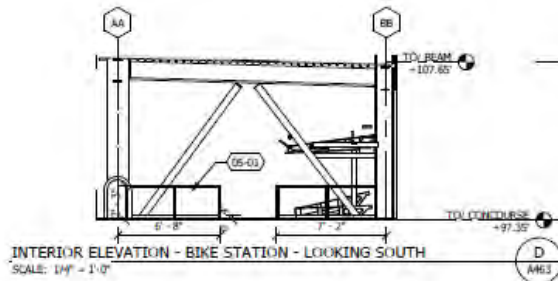


The bike station on the concourse level will accommodate approximately 110 bikes. Bike station is in close proximity to station agent's booth.



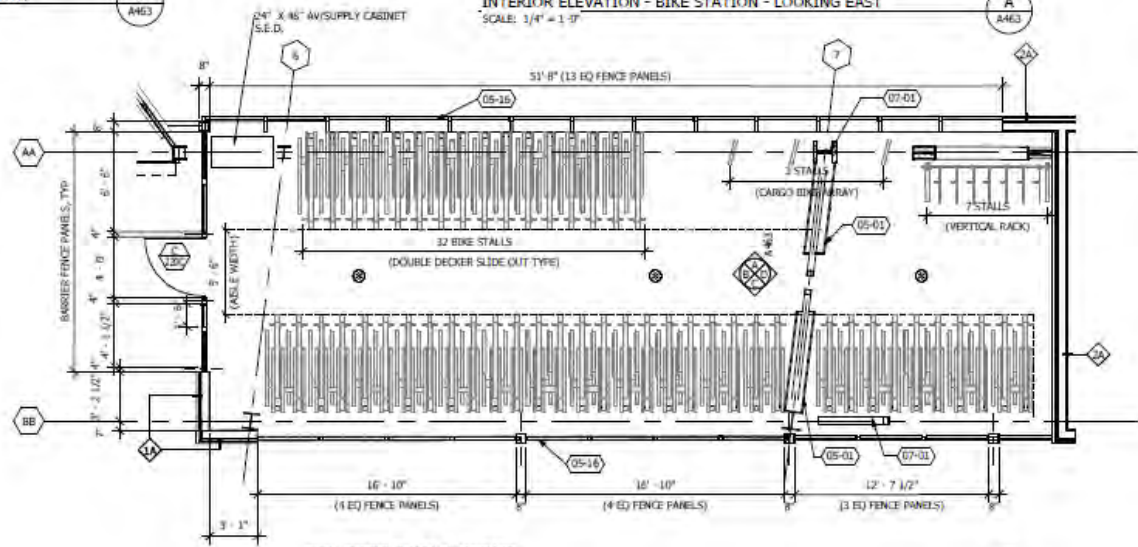
Irvington BART Station

# Bike Parking – Concourse Level



## Bike Parking Distribution:

- Double Decker Units: 25  
(Accommodates 100 bikes)
- Vertical Units: 7
- Cargo Units: 3





Irvington BART Station

# Bike Parking – Concourse Level



Example double-decker unit



Example vertical unit

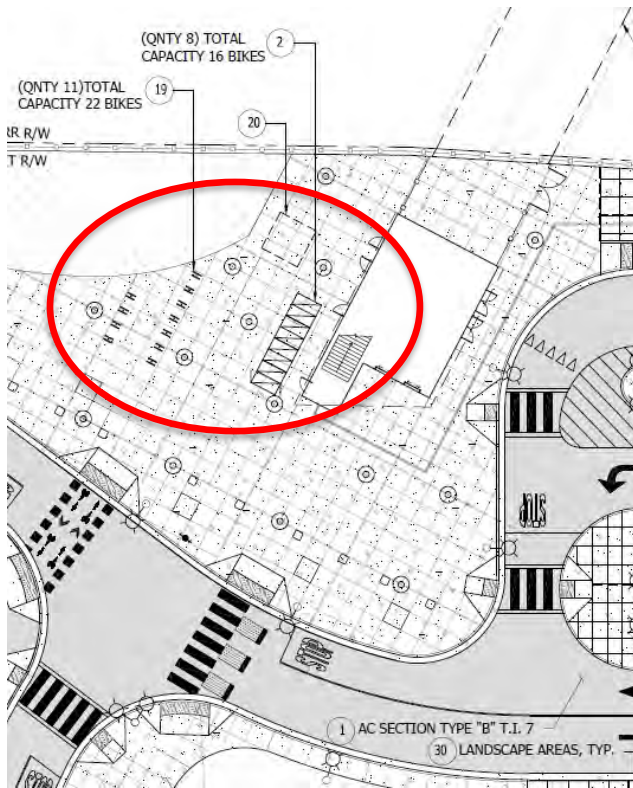


Example cargo unit



Irvington BART Station

# Bike Parking – Plaza Level



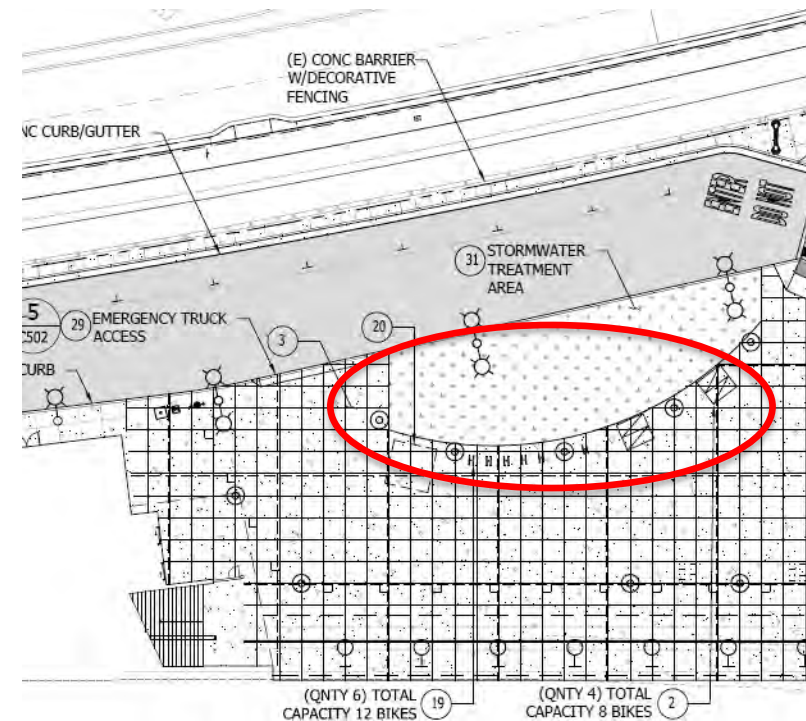
## Western Entrance

**BikeLink eLocker Spaces: 16**

**Bike Racks: 11**

**Total Bike Parking: 38**

**Reserved Space for Bike/Scooter Share**



## Eastern Entrance

**BikeLink eLocker Spaces: 8**

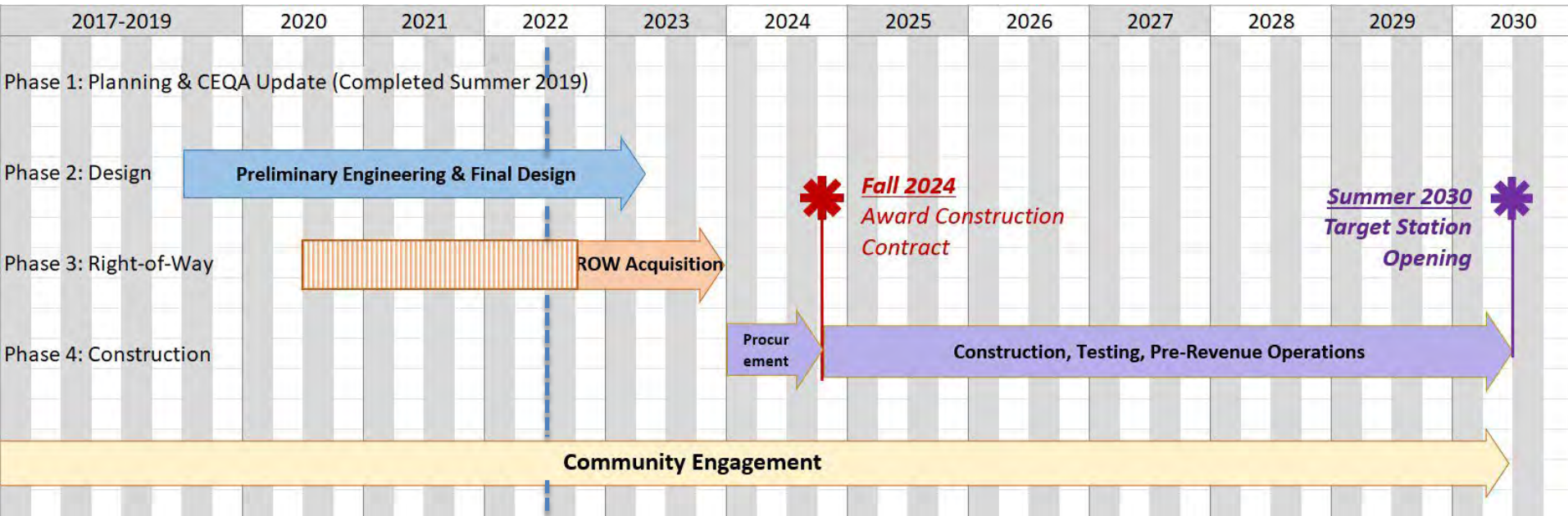
**Bike Racks: 6**

**Total Bike Parking: 20**

**Reserved Space for Bike/Scooter Share**



# WSX Irvington BART Station Project Schedule



## Major Assumptions:

- At least 1.1 years of continuous single-tracking can be utilized with extended work hours.
- Sufficient funding will be available to not further impede progress.



WSX Irvington BART Station

Q & A



**BBATF Members (terms are three years)**

LAST UPDATED = 5/18/22

Code: Term Year-County-Representative

Abbreviations: SF = San Francisco  
 AL = Alameda  
 CC = Contra Cost  
 SM = San Mateo  
 SC = Santa Clara

BAO = bicycle advocacy organization  
 BAC = bicycle advisory committee of the representing county

occupied sitting member needs renomnation

BAO	BAC	BAO	BAC	<-appointed by
2021	2022	2023	2024	
1-SF-Allison Quach?	2-SF-Tyler Morris	3-SF-Tyler Morris	1-SF-	
3-SF-Rick Goldman	1-SF-Jeremiah Malller	2-SF-Jeremiah Malller	3-SF-Jeremiah Malller	
2-SF-VACANT	3-SF-VACANT	1-SF-	2-SF-	
1-AL-Phoenix Magnum	2-AL-Phoenix Magnum	3-AL-Phoenix Magnum	1-AL-	
3-AL-Jon Spangler	1-AL-Jon Spangler	2-AL-Jon Spangler	3-AL-Jon Spangler	
2-AL-Jianhan Wang	3-AL-Jianhan Wang	1-AL-	2-AL-	
1-CC-VACANT	2-CC-Bill Pinkham	3-CC-Bill Pinkham	1-CC-	
3-CC-VACANT	1-CC-VACANT	2-CC-VACANT	3-CC-VACANT	
2-CC-VACANT	3-CC-VACANT	1-CC-	2-CC-	
1-SM-VACANT	2-SM-VACANT	3-SM-VACANT	1-SM-	
3-SM-VACANT	1-SM-Francisco Munoz?	2-SM-Francisco Munoz?	3-SM-Francisco Munoz?	
2-SM-Katie DeLeuw	3-SM-VACANT	1-SM-	2-SM-	
1-SC-VACANT	2-SC-VACANT	3-SC-VACANT	1-SC-	
3-SC-VACANT	1-SC-VACANT	2-SC-VACANT	3-SC-	
2-SC-VACANT	3-SC-VACANT	1-SC-	2-SC-	
1-ALG-VACANT	2-ALG-VACANT	3-ALG-VACANT	1-ALG-	
3-ALG-VACANT	1-ALG-Rick Goldman	2-ALG-Rick Goldman	3-ALG-Rick Goldman	
2-ALG-VACANT	3-ALG-VACANT	1-ALG-	2-ALG-	



# Bikes on BART

## BART Elevator Dimensions

As more of our riders utilize bikes on BART, and larger cargo bikes in particular, we have created this guide to assist in navigating BART elevators. The elevator dimensions included are intended as a guide. As individual bikes and elevators may vary, please use your best judgment in utilizing system elevators.

For more information about Bikes on BART, visit [bart.gov/bikes](https://bart.gov/bikes).

Let's go.



Station	Elevator Stops	Door	Width	Length	Diagonal
12th St./Oakland	Street at 14th Street/Concourse	42 "	63 "	77 "	100 "
12th St./Oakland	Street at 11th Street/Concourse	36 "	51 "	67 "	84 "
12th St./Oakland	Concourse/All Platforms	47 "	61 "	66 "	90 "
16th St. Mission	Street/Concourse	42 "	56 "	67 "	85 "
16th St. Mission	Concourse/All Platforms	48 "	60 "	70 "	90 "
19th St./Oakland	Street at 17th/Concourse	35 "	57 "	63 "	83 "
19th St./Oakland	Concourse/All Platforms	47 "	61 "	67 "	88 "
24th St. Mission	Street/Concourse	42 "	56 "	67 "	85 "
24th St. Mission	Concourse/All Platforms	48 "	60 "	70 "	90 "
Antioch	Street/Overpass	48 "	64 "	92 "	110 "
Antioch	Overpass/All Platforms	48 "	64 "	90 "	109 "
Ashby	Street/All Platforms	42 "	60 "	90 "	105 "
Ashby	Street/All Platforms	39 "	61 "	61 "	85 "
Ashby	Adeline Street/Station	42 "	65 "	81 "	100 "
Balboa Park	Street/All Platforms	41 "	57 "	62 "	81 "
Bay Fair	Street/All Platforms	41 "	56 "	62 "	83 "
Berryessa	Street/All Platforms	42 "	68 "	76 "	101 "
Castro Valley	Street/All Platforms	40 "	66 "	99 "	120 "
Civic Center	Street/Concourse	34 "	56 "	62 "	82 "
Civic Center	Concourse/All Platforms	36 "	60 "	84 "	103 "
Coliseum	Street/All Platforms	42 "	56 "	63 "	83 "
Coliseum/OAK	Street/Coliseum Platform/Connector	42 "	66 "	83 "	98 "
Colma	Street/All Platforms	42 "	65 "	100 "	120 "
Colma	Street/All Platforms	42 "	65 "	100 "	120 "
Concord	Street/All Platforms	36 "	56 "	63 "	83 "
Daly City	Street/Platform for SF and East Bay	35 "	55 "	61 "	81 "
Daly City	Street/Platform to SFO/Millbrae	36 "	57 "	61 "	82 "
Downtown Berkeley	Street/Concourse	36 "	53 "	78 "	92 "
Downtown Berkeley	Concourse/All Platforms	36 "	54 "	75 "	91 "
Dublin/Pleasanton	Street/All Platforms	42 "	68 "	99 "	118 "
El Cerrito Del Norte	Street/Platform to Richmond	42 "	65 "	79 "	101 "
El Cerrito Del Norte	Street/Platform to all other destinations	42 "	65 "	79 "	101 "
El Cerrito Plaza	Street/Platform to Richmond	36 "	44 "	61 "	75 "
El Cerrito Plaza	Street/Platform to all other destinations	36 "	44 "	61 "	75 "
Embarcadero	Street/Concourse	34 "	60 "	64 "	87 "
Embarcadero	Concourse/All Platforms	38 "	66 "	68 "	91 "
Fremont	Street/All Platforms	35 "	58 "	67 "	88 "
Fruitvale	Street/Platform to Berryessa/DP	38 "	56 "	61 "	81 "
Fruitvale	Street/Platform to Richmond/SF	38 "	56 "	61 "	81 "
Glen Park	Street/Platform to Richmond/SF	45 "	57 "	57 "	78 "
Hayward	Street/Platform to Richmond/SF	42 "	55 "	72 "	90 "
Hayward	Station/Platform to Berryessa	42 "	55 "	72 "	90 "
Lafayette	Street/All Platforms	43 "	55 "	63 "	83 "

Station	Elevator Stops	Door	Width	Length	Diagonal
Lake Merritt	Street/Concourse	40"	57"	65"	83"
Lake Merritt	Concourse/All Platforms	42"	71"	79"	105"
MacArthur	Street/Platform to Richmond/PBP	36"	59"	82"	100"
MacArthur	Street/Platform to Berryessa/SF	36"	59"	82"	100"
Millbrae	East Side Street/Concourse	42"	60"	100"	120"
Millbrae	Caltrain/Concourse	42"	60"	100"	120"
Millbrae	Concourse/Platform 1-2	42"	60"	100"	120"
Millbrae	Concourse/Platform 3	42"	60"	100"	120"
Milpitas	Street/All Platforms	42"	66"	90"	110"
Montgomery	Street/Concourse	34"	56"	63"	83"
Montgomery	Concourse/All Platforms	43"	52"	71"	87"
North Berkeley	Street/All Platforms	39"	56"	62"	84"
North Concord	Street/All Platforms	42"	60"	100"	120"
OAK	Street/All Platforms	42"	62"	80"	101"
Orinda	Street/All Platforms	34.9"	55"	63"	83"
Pittsburg Bay Point	Street/Concourse	42"	60"	100"	120"
Pittsburg Bay Point	Concourse/All Platforms	42"	60"	100"	120"
Pittsburg Center	Street/All Platforms	48"	67"	90"	111"
Pleasant Hill	Street/Platform to Antioch	36"	62"	56"	83"
Pleasant Hill	Street/Platform to SFO/Millbrae	36"	56"	62"	83"
Powell	Street/Concourse	36"	58"	63"	86"
Powell	Concourse/All Platforms	48"	52"	71"	88"
Richmond	Plaza Street/Concourse	42"	66"	77"	100"
Richmond	East Street/Concourse	42"	65"	106"	122"
Richmond	Concourse/All Platforms	36"	60"	61"	85"
Richmond	Concourse/Amtrak	42"	67"	84"	100"
Rockridge	Street/All Platforms	36"	58"	60"	83"
San Bruno	Street/All Platforms	42"	65"	100"	120"
San Leandro	Street/Platform to SF/Richmond	38"	57"	62"	83"
San Leandro	Street/Platform to Berryessa/DP	38"	57"	61"	81"
SFO	Not necessary				
South Hayward	Street/Platform to SF/Overpass to Berryessa)	35"	57"	63"	85"
South Hayward	Overpass/Berryessa	35"	57"	63"	85"
South San Francisco	Street/All Platforms	42"	61"	100"	120"
Union City	Street/Platform to SF/Richmond	42"	69"	79"	102"
Union City	Street/Platform to Berryessa	42"	68"	77"	102"
Walnut Creek	Street/Platform to Antioch	37"	56"	62"	83"
Walnut Creek	Street/Platform to SFO/Millbrae	37"	56"	62"	83"
Warm Springs	Street/Concourse	42"	69"	89"	109"
Warm Springs	Concourse/All Platforms	42"	69"	89"	109"
West Dublin/Pleasanton	Concourse/All Platforms	42"	67"	86"	102"
West Oakland	Street/Platforms to East Bay	35"	56"	62"	83"
West Oakland	Street/Platforms to SFO/Millbrae	35"	56"	62"	83"